

Publications of the National Agency for Medicines 1/2009

The 2007 Implant Yearbook on Orthopaedic Endoprostheses

Finnish Arthroplasty Register

CONTENT

GENERAL

Primary Total Joint Arthroplasty operations performed in different Hospital Districts/100 000 inhabitants in 2007.....	4
Primary Total Joint Arthroplasty operations performed in different Hospital Districts/100 000 inhabitants, average of the years 2003 - 2007	4
Primary THA operations in different types of hospitals in 1998 - 2007	5
Primary TKA operations in different types of hospitals in 1998 - 2007	5
Total Hip Revision operations in different types of hospitals in 1998 - 2007.....	6
Total Knee Revision operations in different types of hospitals in 1998 - 2007.....	6
Primary complications of primary Total Hip operations in 1998 - 2007.....	7
Primary complications of primary Total Knee operations in 1998 - 2007	7
Number of hospitals performing primary and revision Total Joint Arthroplasties in 1988 - 2007.....	8
Hip revisions and their proportion of all primary Hip Arthroplasties.....	8
Knee revisions and their proportion of all primary Knee Arthroplasties	9
Total Joint Arthroplasty operations performed in different hospitals in 1998 - 2007	11

TOTAL HIP ARTHROPLASTIES (THA)

Total Hip prostheses used in primary operations in 1998 - 2007	12
Total Hip prostheses used in primary operations, over 100 sliding pairs used in 1998 - 2007.....	16
Prostheses, over 100 Implants removed in 1998 - 2007	19
Primary THA operations performed in different Hospital Districts/100 000 inhabitants in 2007.....	20
Primary THA operations performed in different Hospital Districts/100 000 inhabitants, average of the years 2003 - 2007 ...	21
The ratio-% of revision and primary THA operations in different Hospital Districts in 2007	22
Primary and revision THA operations in 1988 - 2007.....	22
Primary indications for THA in 1988 - 2007	23
Fixation technique in primary THA in 1998 - 2007, femoral component.....	23
Fixation technique in primary THA in 1998 - 2007, acetabular component.....	24
Age distribution of Total Hip Arthroplasty operations in 2003 - 2007, female	24
Age distribution of Total Hip Arthroplasty operations in 2003 - 2007, male	25
Revision THA operations performed in different Hospital Districts/100 000 inhabitants in 2007.....	25
Revision THA operations performed in different Hospital Districts/100 000 inhabitants, average of the years 2003 - 2007 ...	26
Number of hospitals performing Total Hip Arthroplasties in 1988 - 2007.....	26
Indications for THA revisions in 1998 - 2007.....	27
The most common types of removed femoral components in THA operations in 1998 - 2007.....	27
The most common types of removed acetabular components in THA operations in 1998 - 2007.....	28
Previous operation year in THA revisions in 2007.....	28
The most common types of femoral components used in THA revision	29
The most common types of acetabular components used in THA revision	29
The most common bone cements used in Hip Arthroplasties in 1998 - 2007.....	30
The most common antibiotic prophylaxis used in Hip Primary operations in 1998 - 2007.....	30
Allograft, Autograft and Xenograft in Hip Revisions in 1998 - 2007.....	31

TOTAL KNEE ARTHROPLASTIES (TKA)

Total Knee prostheses used in primary operations in 1998 - 2007	32
Knee Prostheses, over 50 Implants removed in 1998 - 2007.....	34
Primary TKA operations performed in different Hospital Districts/100 000 inhabitants in 2007.....	35
Primary TKA operations performed in different Hospital Districts/100 000 inhabitants, average of the years 2003 - 2007	36
The ratio-% of revision and primary TKA operations in different Hospital Districts in 2003	32
Primary and revision TKA operations in 1988 - 2007	36
Primary Indications for TKA in 1988 - 2007	37
Fixation technique in primary TKA in 1988 - 2007, femoral component.....	37
Fixation technique in primary TKA in 1988 - 2007, tibial component	38
Age distribution of TKA operations in 2003 - 2007, female.....	38
Age distribution of TKA operations in 2003 - 2007, male	39
Revision TKA operations performed in different Hospital Districts/100 000 inhabitants in 2007.....	39
Revision TKA operations performed in different Hospital Districts/100 000 inhabitants, average of the years 2003 - 2007	41

Number of hospitals performing Total Knee Arthroplasties in 1988 - 2007.....	41
Indications for TKA revisions in 1998 - 2007	45
The most common types of removed knee prostheses in 1998 - 2007	42
Previous operation year in Total Knee Arthroplasty revisions in 2007.....	42
The most common types of knee revision prostheses used in 1998 - 2007	43
The most common bone cements used in Knee Arthroplasties in 1998 - 2007.....	43
The most common antibiotic prophylaxis used in Knee Primary operations in 1998 - 2007	44
Allograft, Autograft and Xenograft in Knee Revisions in 1998 - 2007	44

OTHER JOINTS

Primary and revision arthroplasties of other joints, upper extremity in 1988 - 2007.....	45
Primary and revision arthroplasties of other joints, lower extremity in 1988 - 2007	45
Primary indications for arthroplasties of other joints in 1988 - 2007.....	46
Indications for revision of other joints in 1998 - 2007.....	47
Revision operations of other joints in 1998 - 2007.....	47
Previous operation year of first revision in other joints in 2007.....	48
Number of hospitals performing Elbow and Shoulder Arthroplasties in 1988 - 2007.....	48
Shoulder Arthroplasty operations performed in different Hospital Districts/100 000 inhabitants in 2007.....	49
Shoulder Arthroplasty operations performed in different Hospital Districts/100 000 inhabitants in 2003 - 2007.....	49
Elbow Arthroplasty operations performed in different Hospital Districts/100 000 inhabitants in 2007	50
Elbow Arthroplasty operations performed in different Hospital Districts/100 000 inhabitants in 2003 - 2007.....	50

NOTIFICATION FORMS

Notifications to the Implant Register; Orthopaedic Endoprotheses	51
Notifications to the Implant Register; Long-term complications	52

Figure G1a: Primary Total Joint Anthroplasty operations performed in different Hospital Districts / 100 000 inhabitants in 2007

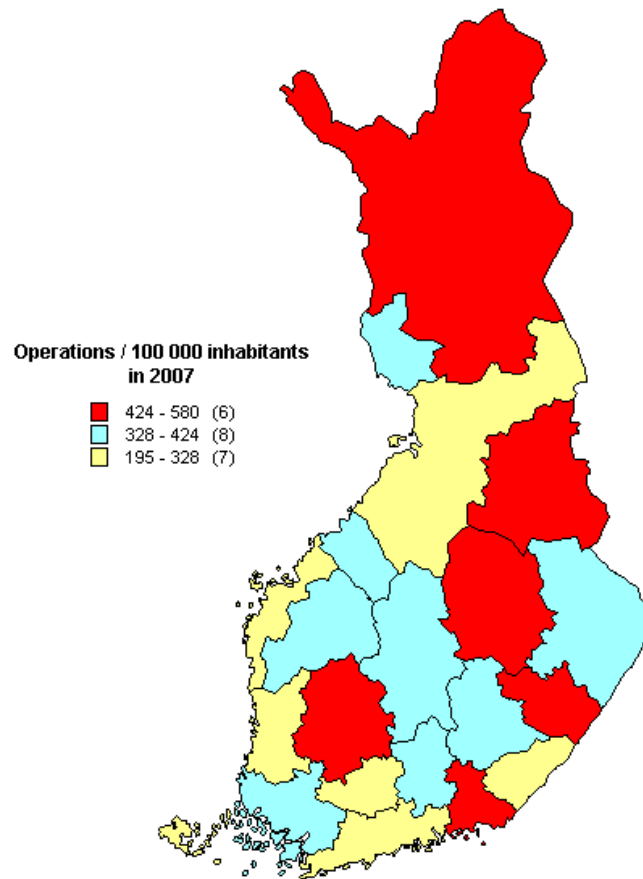


Figure G1a: Primary Total Joint Anthroplasty operations performed in different Hospital Districts / 100 000 inhabitants, average of the years 2003 - 2007

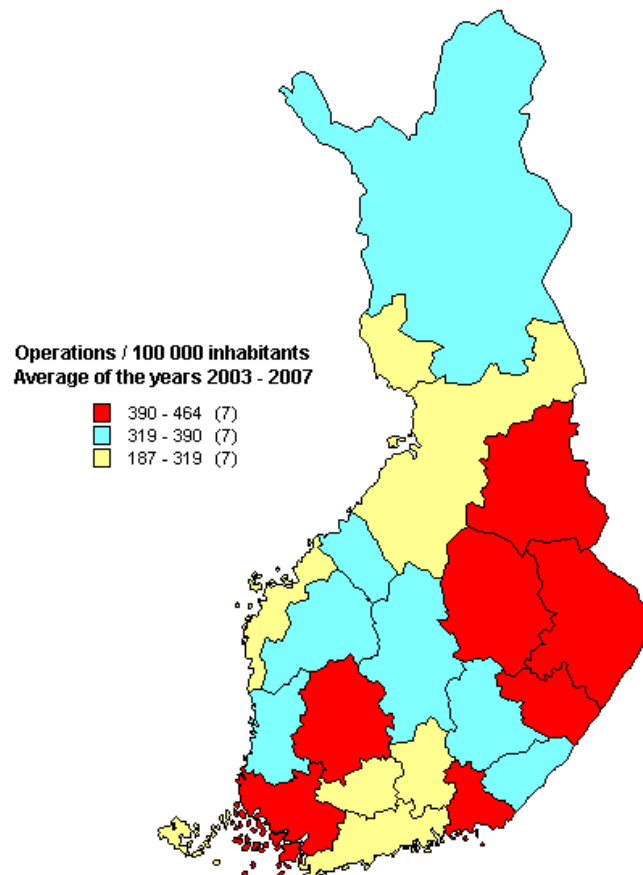


Figure G2a: Primary Total Hip Arthroplasty operations in different types of hospitals in 1998 – 2007

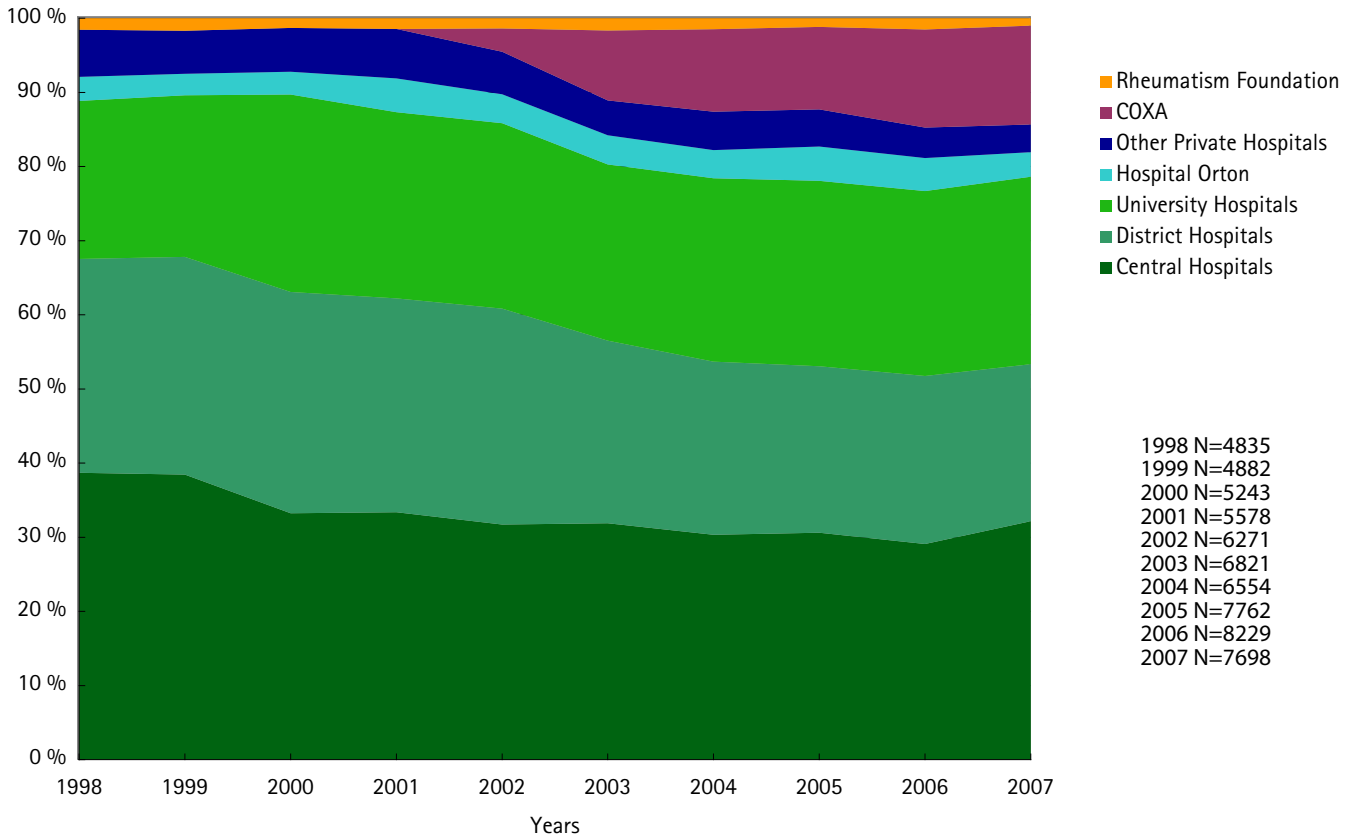


Figure G2b: Primary Total Knee Arthroplasty operations in different types of hospitals in 1998 – 2007

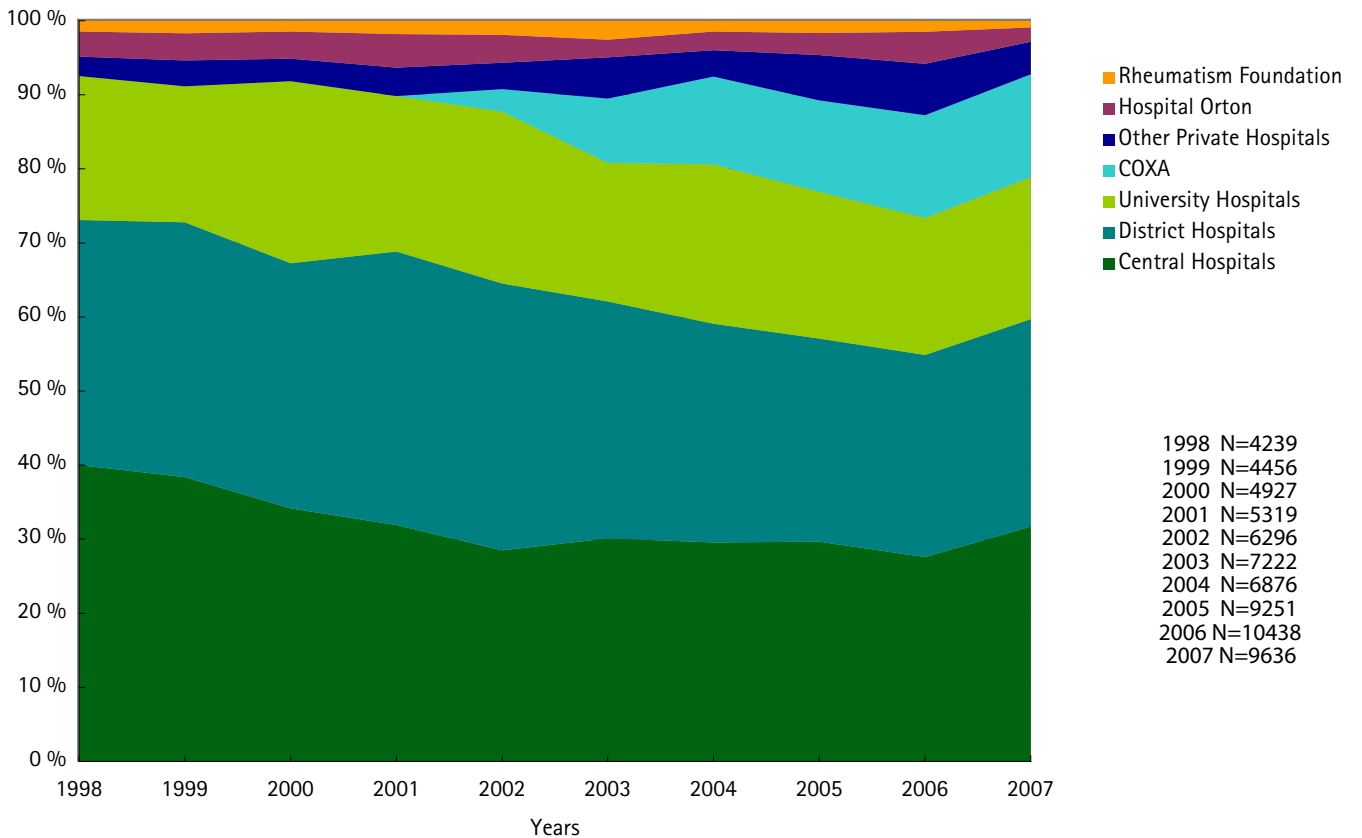


Figure G3a. Total Hip Revision operations in different types of hospitals in 1998 – 2007

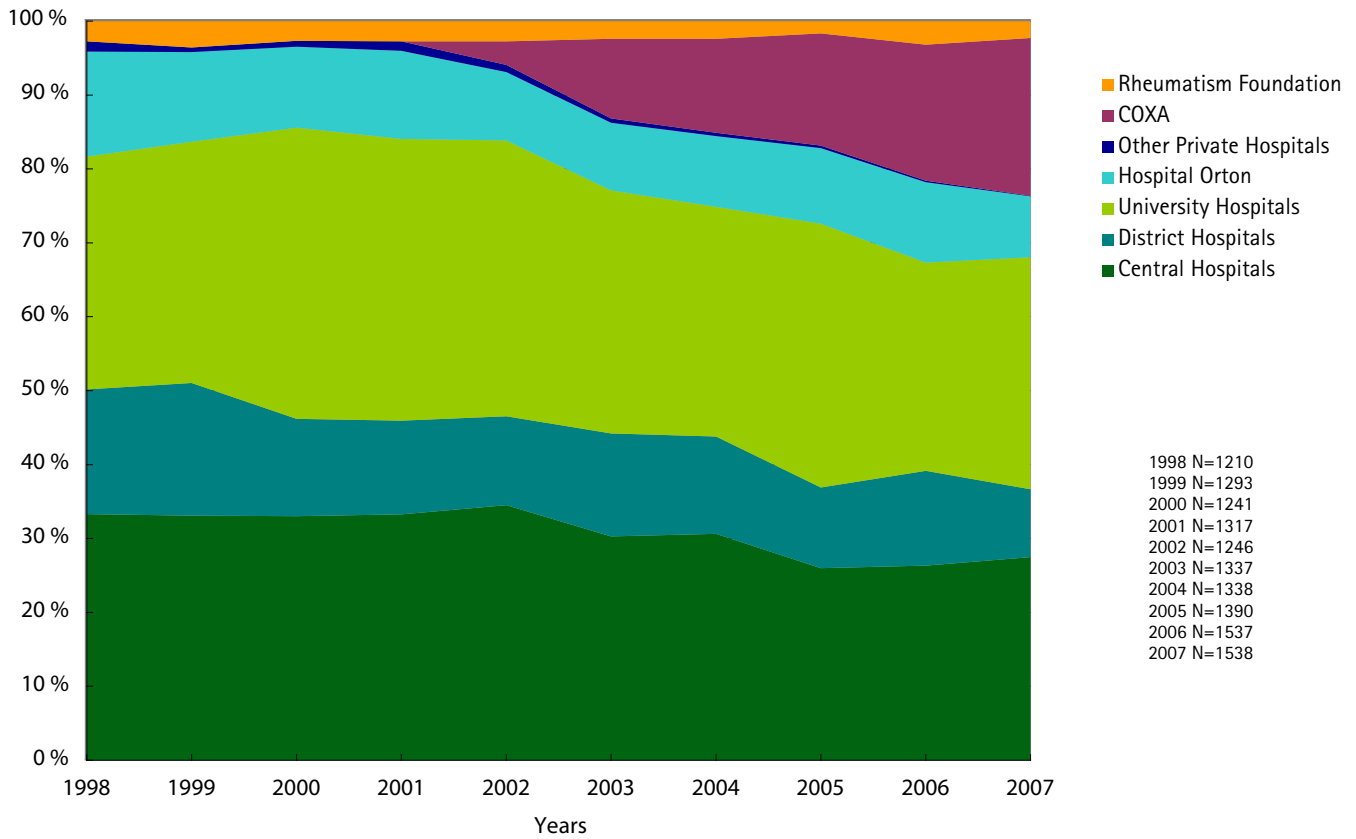


Figure G3b. Total Knee Revision operations in different types of hospitals in 1998 – 2007

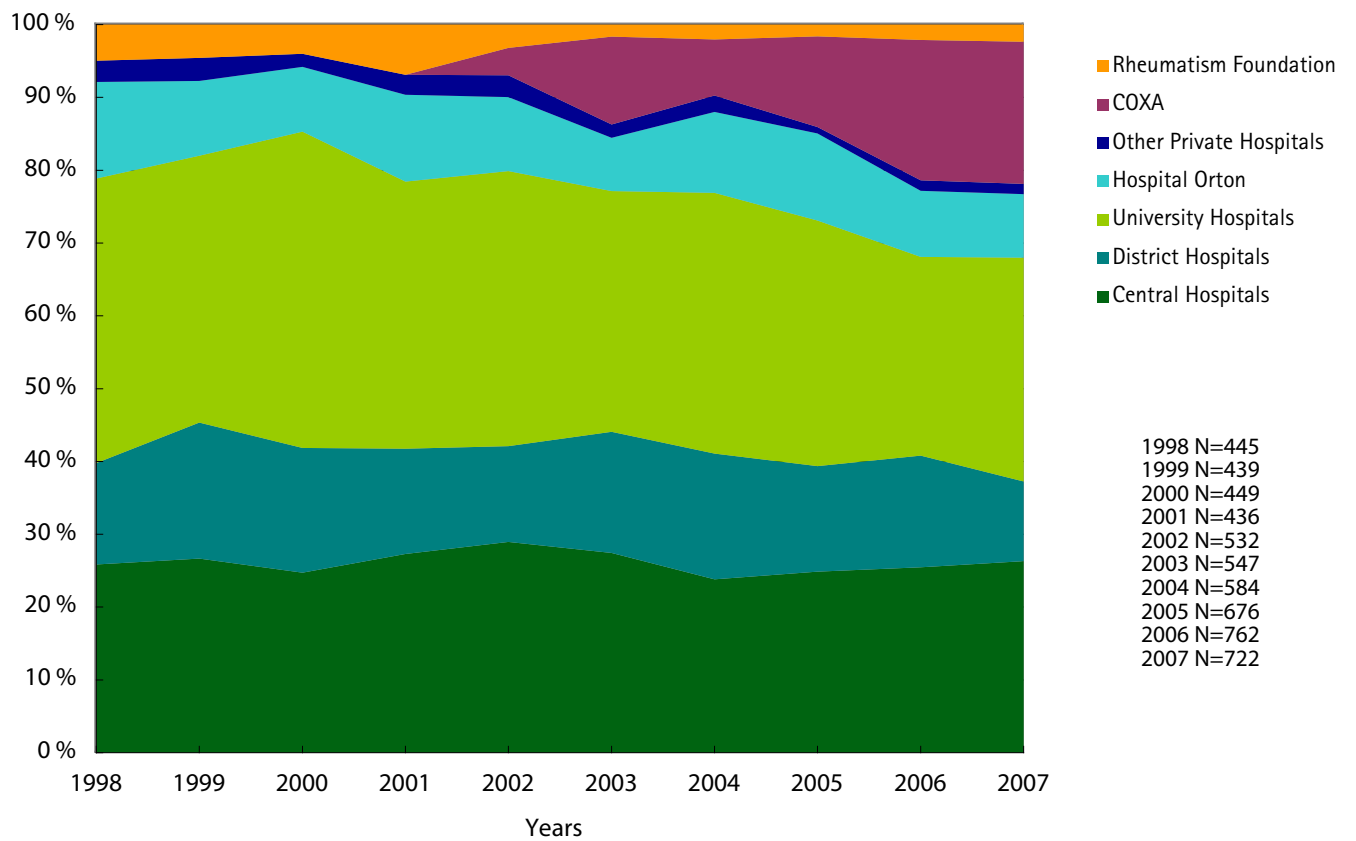


Figure G4a. Primary complication of primary Total Hip Arthroplasty operations in 1998 – 2007

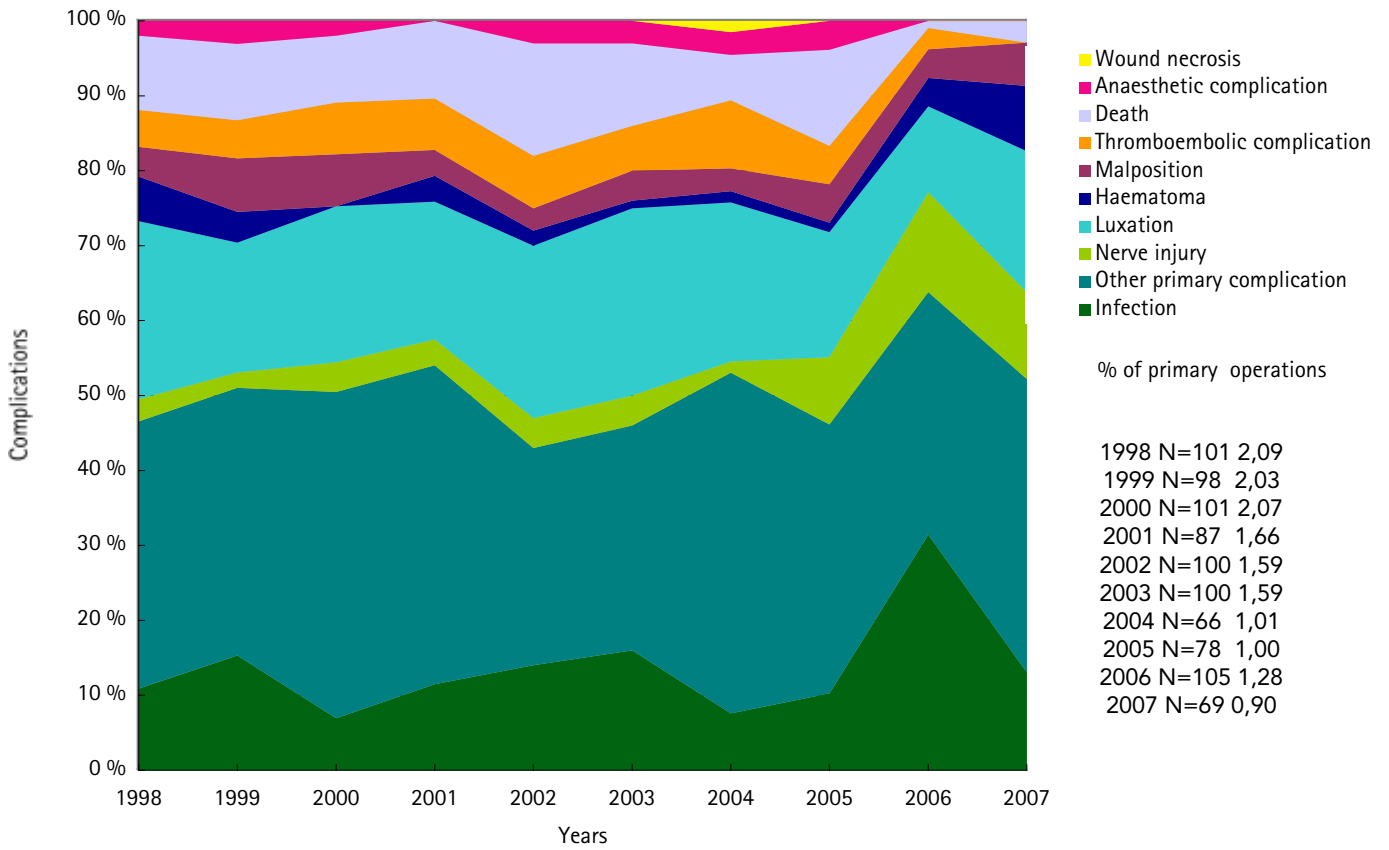


Figure G4b. Primary complication of primary Total Knee Arthroplasty operations in 1998 – 2007

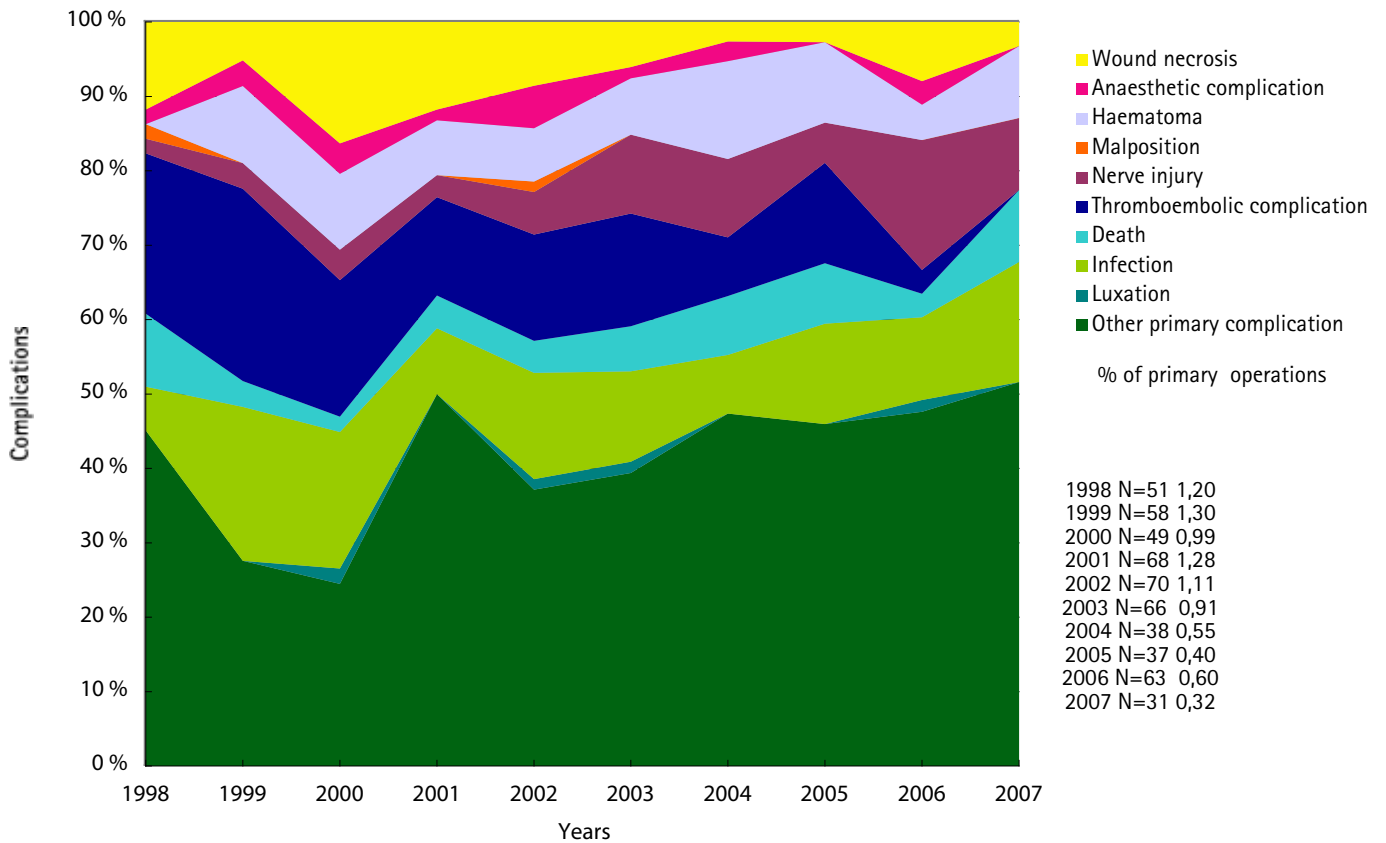


Figure G6a. Hip revisions and their proportion of all primary Hip Arthroplasties

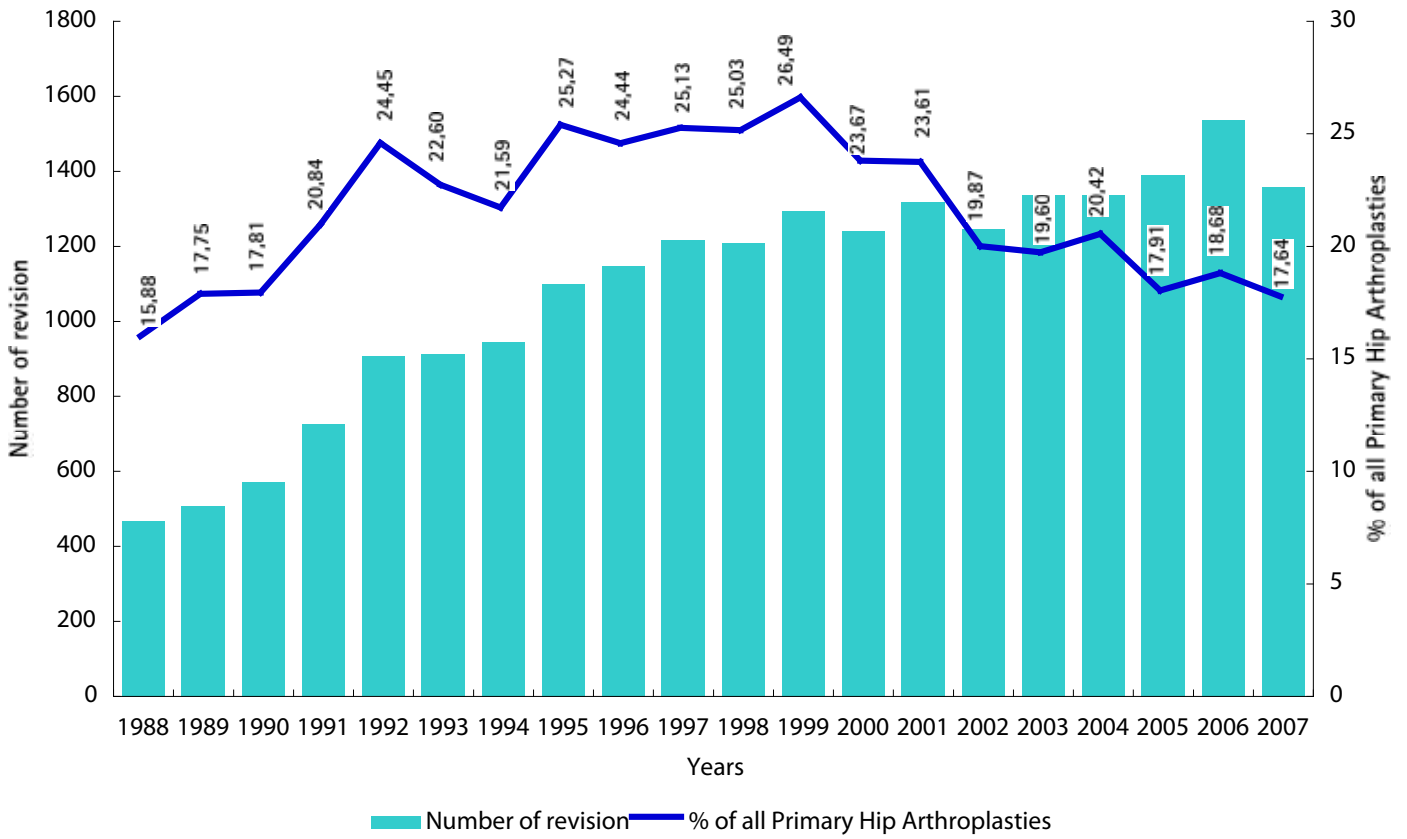


Figure G6b. Knee revisions and their proportion of all primary Knee Arthroplasties

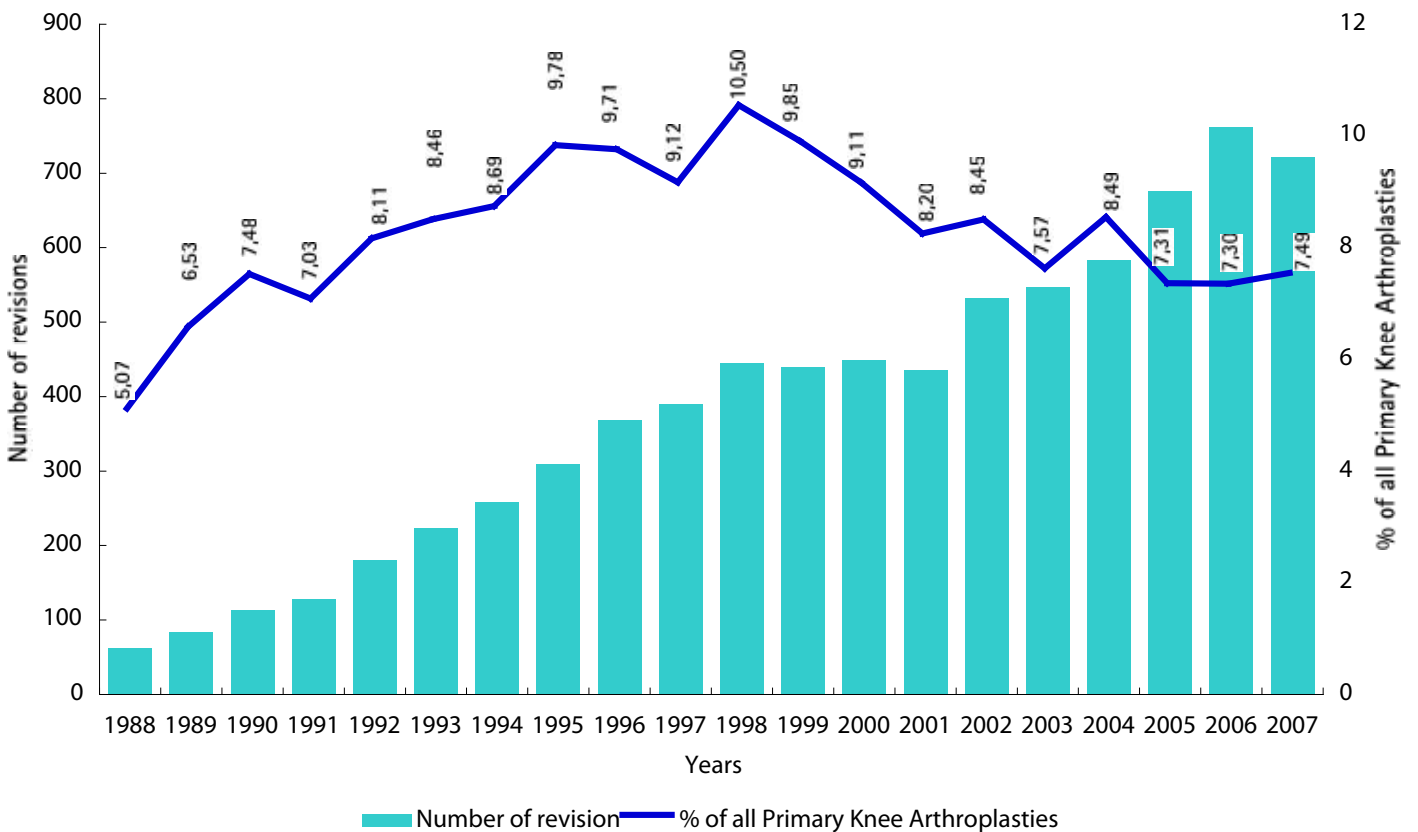


TABLE G8. TOTAL JOINT ARTHROPLASTY OPERATIONS PERFORMED IN DIFFERENT HOSPITALS IN 1998 – 2007

HOSPITAL	1998	1999	2000	2001	2002	2003	2004	2005	2006	2007	Total
Turku University Central Hospital	504	460	558	590	670	731	1286	1393	1476	1443	9111
Salo Regional Hospital	183	138	120	140	181	165	181	262	255	198	1823
Loimaa Regional Hospital	155	122	164	173	227	191	152	156	245	216	1801
Turku Surgical Hospital	212	197	243	261	323	308	0	0	0	0	1544
Turunmaa Hospital	98	102	118	124	114	128	126	130	151	163	1254
Vakka Suomi Hospital	61	48	35	37	27	38	48	94	130	116	634
Raisio Regional Hospital	98	110	84	98	70	106	0	0	0	0	566
Satakunta Central Hospital	328	299	334	322	325	484	426	457	394	369	3738
Rauma Regional Hospital	171	183	188	193	224	273	224	304	324	269	2353
Kanta Häme Central Hospital	149	122	243	218	211	289	359	394	292	305	2582
Forssa Hospital	0	0	0	102	142	122	121	145	169	149	950
Riihimäki Regional Hospital	78	74	84	70	55	55	0	0	0	0	416
Lounais Häme Regional Hospital	94	111	110	0	0	0	0	0	0	0	315
Tampere University Hospital	533	540	666	691	498	145	89	176	145	121	3604
Hatanpää Hospital	191	180	206	184	136	2	0	0	1	0	900
Valkeakoski Regional Hospital	116	131	144	181	115	10	10	11	6	0	724
Vammala Hospital	112	110	110	110	114	6	7	4	3	2	578
Päijät-Häme Central Hospital	370	420	382	398	426	305	326	475	524	674	4300
Heinola Health Centre	0	10	23	2	32	48	52	63	59	68	357
Kymenlaakso Central Hospital	224	246	310	343	307	310	354	401	429	562	3486
Kuusankoski Regional Hospital	103	121	117	126	133	136	132	199	212	232	1511
Hamina Hospital	92	112	102	74	107	100	59	94	89	53	882
South Carelia Central Hospital	155	197	191	169	172	189	187	351	345	336	2292
Mikkeli Central Hospital	169	208	219	318	312	334	303	377	252	256	2748
Pieksämäki Regional Hospital	0	0	36	67	69	89	132	148	127	145	813
Pieksämäki Hospital	9	0	0	0	0	0	0	0	0	0	9

Savonlinna Central Hospital	227	242	225	242	197	145	151	258	289	278	2254
North Carelia Central Hospital	285	233	400	380	491	651	379	655	760	688	4922
Kuopio University Hospital	680	578	734	683	813	1022	897	1080	1094	1091	8672
Iisalmi Hospital	134	180	84	163	201	203	139	189	204	233	1730
Varkaus Regional Hospital	106	123	115	132	116	138	118	110	124	110	1192
Central Finland Central Hospital	461	436	448	481	520	613	508	702	702	656	5527
Jokilaakso Hospital	220	211	212	234	233	253	230	270	323	323	2509
Seinäjoki Central Hospital	422	384	349	331	351	427	385	423	458	402	3932
Åhtäri Hospital	33	46	103	214	246	247	244	211	279	360	1983
Vaasa Central Hospital	146	126	170	214	223	180	225	297	379	410	2370
Pietarsaari Hospital	88	72	113	109	103	103	107	0	0	0	695
Selkämeri Hospital	30	39	48	72	47	0	0	135	231	0	602
Malmi Health Centre	0	0	0	0	0	0	0	88	26	16	130
Keski-Pohjanmaa Central Hospital	234	240	235	216	226	311	293	279	242	284	2560
Oulu University Hospital	556	636	561	502	708	692	731	725	780	756	6647
Oulaskangas Hospital	0	0	4	49	102	163	223	243	254	286	1324
Raahe Hospital	0	0	17	36	69	66	88	88	43	62	469
Raahe Regional Hospital	36	48	41	0	0	0	0	0	0	0	125
Kuusamo Health Centre	20	61	26	50	55	34	40	35	41	41	403
Kainuu Central Hospital	188	165	154	174	251	251	197	201	313	335	2229
Länsi-Pohja Central Hospital	125	151	162	163	155	169	206	181	209	229	1750
Lappi Central Hospital	226	242	173	159	181	309	264	249	338	401	2542
Hospital Lapponia	0	32	135	100	186	188	149	189	150	125	1254
Åland Central Hospital	44	43	32	44	65	43	67	75	75	59	743

HUS / Helsinki city Hospitals	473	529	728	723	1133	1218	996	1314	1413	1236	9763
Peijas Hospital	188	181	196	177	297	371	528	462	569	693	3662
Hyvinkää Hospital	150	202	216	232	238	260	268	277	332	360	2535
Jorvi Hospital	217	233	218	231	284	225	223	307	238	5	2181
Porvoo Hospital	60	77	56	87	149	158	181	253	313	223	1557
HUS Töölö Hospital	313	378	180	80	108	81	49	26	25	42	1282
Lohja Hospital	79	104	84	91	94	126	113	142	159	179	1171
Länsi-Uusimaa Hospital	83	79	95	108	81	121	106	106	152	110	1041
Orton Orthopaedic Hospital	613	593	630	777	748	626	675	833	953	619	7067
Coxa Oy					453	1493	1787	2302	2946	2735	11716
Rheumatism Foundation Hospital	326	385	368	410	420	495	374	434	525	384	4121
Hospital of the Oulu Deaconess Institute	145	157	122	153	196	240	186	337	389	291	2216
Hospital Pulssi	34	39	65	105	88	146	115	269	338	103	1302
Eira Hospital	13	22	32	20	56	150	55	178	228	125	879
Hospital Mehiläinen, Helsinki	26	29	18	37	27	22	17	25	23	31	255
Diacor Hospital	31	29	27	51	29	31	31	22	34	22	307
Dextra Hospital	32	19	23	28	30	20	11	6	0	0	169
Hospital Mehiläinen, Tampere	22	31	35	60	44	8	26	11	5	2	244
Hospital Lasaretti	17	22	8	12	7	24	31	11	17	0	149
Itä-Suomi Medical Centre	15	18	15	42	21	30	34	16	9	9	209
Hospital Mehiläinen, Turku	1	1	13	13	19	29	19	16	16	5	132
Kuntohovi Medical Centre	0	0	0	0	0	0	38	92	24	12	166
Porin Lääkärital	0	0	0	5	28	41	15	17	15	17	138
Hospital Cordia	1	0	0	0	0	0	0	0	87	88	176
Hospital Botnia	0	0	1	12	9	13	15	7	0	0	57
Seinäjoki Medical Centre	0	0	0	0	0	0	0	14	2	10	26
Suomen Terveystalo	0	0	0	0	0	0	0	0	0	24	24
Lääkärikeskus ARS Medicina	0	0	0	0	0	0	0	0	7	9	16
Central Military Hospital	21	19	23	14	0	0	0	0	0	0	77
TOTAL	11326	11676	12481	13207	15088	16700	16108	19794	21761	20156	158493

Table H1a TOTAL HIP PROSTHESES USED IN PRIMARY OPERATIONS IN 1998 – 2007

FEMORAL STEM	1998	1999	2000	2001	2002	2003	2004	2005	2006	2007	Total
EXETER UNIVERSAL	1195	1449	1598	1743	1907	1959	1695	1870	1553	1138	16107
BIOMET COLLARLESS	829	756	844	839	945	1054	1077	1512	1641	1686	11183
LINK LUBINUS SP II	904	892	981	836	982	916	683	792	796	487	8269
SPECTRON EF	0	11	70	154	293	556	646	850	920	869	4369
ABG II	0	8	69	335	487	531	579	386	247	159	2801
ABG HA	494	562	516	366	230	34	1	1	0	0	2204
SUMMIT (DePuy)	0	0	0	0	10	155	300	372	415	445	1697
BIRMINGHAM	0	0	0	29	190	338	370	325	215	163	1630
ELITE PLUS FLANGED	341	238	237	164	142	90	22	0	0	0	1234
BIOMET COLLARED	171	173	171	156	129	45	19	14	2	2	882
CORAIL (DePuy)	0	0	0	0	0	0	36	110	366	348	860
RESURFACING ASR	0	0	0	0	0	0	95	247	302	208	852
SYNERGY	0	0	0	0	0	0	22	104	300	288	714
VECTRA 3 STD	0	55	103	153	108	20	1	0	0	42	482
CPT (ZIMMER)	36	34	43	22	54	48	36	74	69	31	447
SPOTORNO	1	0	22	58	91	75	24	67	78	27	443
THOMPSON	23	52	45	115	46	50	73	33	3	2	442
BASIS PRIMARY	0	0	0	0	0	35	100	93	110	98	436
PCA MERIDIAN	57	48	52	48	69	74	58	13	1	0	420
RECAP (BIOMET)	0	0	0	0	0	0	36	99	146	119	400
BIOM INTEGRAL LATER	0	4	30	44	84	142	73	2	0	0	379
OMNIFIT HA 6017-	118	111	55	57	25	0	4	0	0	0	370
C-STEM	0	0	0	0	17	52	83	97	56	45	350
BIOMET TAPERLOC	0	0	0	0	0	0	0	0	101	245	346
BIOMET B.FX	0	0	0	0	0	0	23	84	97	140	344
STANMORE	3	18	8	40	65	87	72	36	8	4	341
ACCOLADE TMZF	0	0	0	0	0	0	0	0	30	283	313
DUROM RESURFACING	0	0	0	0	0	0	1	114	98	96	309
OMNIFIT SYMAX	0	0	0	0	0	0	5	72	111	87	275
EMERAUDE	5	8	36	38	44	45	35	30	26	4	271
LPP II	1	13	24	40	33	73	22	51	7	5	269
CONSERVE PLUS	0	0	0	0	0	0	0	6	131	111	248
ELITE PL HIGH OFF	47	39	19	33	42	43	10	0	0	0	233
BIOMET HEAD-NEC	47	38	25	22	25	20	19	4	14	13	227

TIGE VECTRA INOX	0	0	0	0	15	56	47	49	56	0	223
BIOMET INTERLOC	73	54	22	23	22	9	2	1	0	0	206
ELITE PL ROUND BACK	39	47	29	21	23	19	4	0	0	0	182
BICONACT	12	7	38	34	39	21	9	5	0	0	165
MATHYS CCM STD	0	0	0	0	0	10	81	68	2	0	161
PROFEMUR TAPERED (WRIGHT)	0	0	0	0	0	0	0	0	32	128	160
BIOMET CDH	3	12	20	19	16	28	17	12	16	13	156
VERSYS (ZIMMER)	0	0	0	2	2	33	14	48	32	16	147
MS-30 (KIRFIX)	0	14	25	11	23	38	11	10	0	0	132
LPP FEMUR sementitön later	0	0	0	0	0	0	0	2	56	72	130
BIOMET DYSPLASTIC	19	23	10	14	6	10	5	7	10	0	104
BIOMET MALLORY-HEAD	0	0	1	3	0	37	35	20	4	1	101
CORMET RESURFACING	0	0	0	0	12	31	37	21	0	0	101
VECTRA 2 STD	48	27	22	3	0	0	0	0	0	0	100
MÜLLER SLS, TIT	55	34	5	1	0	0	0	0	0	0	95
S-ROM (S)	8	3	6	2	1	3	9	15	25	20	92
ABG (S)	33	24	14	10	4	0	0	0	0	0	85
BIOM INTEGRAL P/R	1	1	4	11	9	17	20	7	6	7	83
VECTRA 3 LATER	0	10	22	28	13	9	0	0	0	0	82
M/JL TAPER (ZIMMER)	0	0	0	0	0	0	0	0	13	65	78
PROXIOLOC	0	11	29	29	4	0	0	0	0	0	73
MÜLLER SLS, MON	55	8	0	0	0	0	0	0	0	0	63
ANTHOLOGY HO POROUS	0	0	0	0	0	0	0	0	7	56	63
BICONACT sement	18	8	4	13	6	2	7	0	0	0	58
LPP	46	0	0	0	0	1	0	0	6	0	53
S-ROM REVISIO	8	8	6	2	5	6	3	3	7	2	50
PROXIMA STD OFFSET	0	0	0	0	0	0	0	0	11	37	48
BIOMET MALLORY-HEAD	0	1	1	0	0	3	5	12	7	16	45
AML	27	14	1	1	0	0	0	0	0	0	43
CHARNLEY	1	0	0	19	12	9	0	0	0	0	41
ANATOMIC MESH	19	13	6	1	0	0	0	0	0	0	39
LPP FEMUR sementitön	0	0	0	0	0	0	0	1	21	16	38
VECTRA 2 LATER	11	20	2	0	0	0	0	0	0	0	33
BIOMET MALLORY-HEAD REV	1	3	7	8	2	1	1	3	3	1	30
MÜLLER STRAIGHT	12	4	0	3	9	0	0	0	0	0	28
BIOMET SHP	15	11	0	2	0	0	0	0	0	0	28
BIOMET REACH/MAL-HEAD	0	0	0	0	1	0	0	4	10	12	27
AUSTIN-MOORE	7	2	2	2	4	3	0	2	2	2	26

LINK REKONSTRUK	2	2	2	7	1	1	3	2	0	6	26
ADEPT	0	0	0	0	0	0	0	0	15	11	26
CONELOCK REVISIO	0	1	2	4	3	7	3	1	1	0	22
LPP FEMUR sement sileä	0	0	0	0	0	0	0	1	1	20	22
CERAVER (S)	8	5	5	2	0	0	0	0	0	0	20
MITCH TRH	0	0	0	0	0	0	0	0	2	17	19
BIOMET OSS	0	0	0	0	0	0	2	3	8	4	17
ZMR (ZIMMER)	0	0	0	0	4	2	2	2	4	2	16
CF-30	15	1	0	0	0	0	0	0	0	0	16
ELITE PLUS CDH	3	2	2	2	0	4	0	0	0	0	13
TRABECULAR METAL	0	0	0	0	0	0	0	0	11	2	13
TIGE VECTRA INOX	0	0	0	0	0	11	0	0	0	0	11
RESTORATION MODULAR	0	0	0	0	0	0	2	1	5	3	11
WAGNER REVISIO	4	0	3	2	0	2	0	0	0	0	11
LPP FEMUR sement later kiil	0	0	0	0	0	0	0	0	4	6	10
LPP FEMUR sement later sileä	0	0	0	0	0	0	0	0	0	9	9
LINK SATULAPROTEESI	3	0	0	1	0	1	2	0	0	0	7
BIOMET CUSTOM CDH	2	0	0	2	1	1	1	0	0	0	7
VIRTEC LATER	0	0	0	0	6	0	0	0	0	0	6
ETM TRAUMASTEM (EXETER)	0	0	0	0	0	0	1	0	4	0	5
LINK LUBINUS IP	1	1	1	0	0	1	0	0	0	0	4
MÜLLER MONOLOG	4	0	0	0	0	0	0	0	0	0	4
PCA E-SERIES	1	1	2	0	0	0	0	0	0	0	4
OMNIFIT LONG	0	0	0	0	0	0	0	0	0	4	4
BICONTACT S	0	0	0	0	0	0	4	0	0	0	4
REEF (DePuy)	0	0	0	0	0	1	1	0	1	1	4
MECROBLOCK	2	1	0	1	0	0	0	0	0	0	4
ELITE PLUS REVISIO	1	0	1	0	0	0	1	0	0	0	3
LINK LUBINUS SP I	3	0	0	0	0	0	0	0	0	0	3
LINK C.F.P	0	0	0	0	0	0	1	0	1	1	3
VIRTEC STD	0	0	0	0	3	0	0	0	0	0	3
S-ROM	0	0	0	0	0	0	0	2	0	1	3
STANMORE METS	0	0	0	0	0	0	2	1	0	0	3
BIOMET BIHAPRO	0	0	0	0	0	0	2	1	0	0	3
KAR (DePuy)	0	0	0	0	0	0	0	0	2	1	3
LUBINUS DEMI	0	0	1	1	0	0	0	0	0	0	2
PCA MEDIUM STEM	2	0	0	0	0	0	0	0	0	0	2
ABG HA REVISIO	0	0	0	0	2	0	0	0	0	0	2

Table H16 TOTAL HIP PROSTHESES USED IN PRIMARY OPERATIONS, OVAR 100 SLIDING PAIRS USED IN 1998 2007

FEMORAL	ACETABULAR	1998	1999	2000	2001	2002	2003	2004	2005	2006	2007	Total
EXETER UNIVERSAL	CONTEMPORARY	217	466	527	791	991	1196	1020	1209	998	735	8150
SPECTRON EF	REFLECTION ALL POLY		11	60	125	258	453	570	757	837	758	3829
EXETER UNIVERSAL	EXETER ALL POLY	512	530	537	468	459	391	329	289	172	111	3798
BIOMET COLLARLESS	BIOMET VISION	124	316	371	415	414	446	352	376	278	188	3280
LINK LUBINUS SP II	LINK IP ACETABULAR CUPS	338	352	353	277	328	281	175	135	138	103	2480
ABG II	ABG II		8	69	325	473	482	441	229	136	109	2272
LINK LUBINUS SP II	LINK LUBINUS ECCENTRIC	437	384	325	216	184	126	120	164	117	68	2141
ABG HA	ABG II	467	522	479	338	180	6					1992
BIOMET COLLARLESS	RECAP (BIOMET)								152	716	1114	1982
BIRMINGHAM	BIRMINGHAM				29	190	338	370	324	215	163	1629
BIOMET COLLARLESS	M2A 38 FLARED ACET CUP							59	576	474	297	1406
LINK LUBINUS SP II	LINK FC ACETABULAR CUPS			52	134	185	164	133	138	173	83	1062
SUMMIT (DePuy)	PINNACLE						72	207	254	247	244	1024
BIOMET COLLARLESS	BIOMET PFU	338	153	166	97	68	73	28	23	3		949
EXETER UNIVERSAL	ABG II	41	53		143	137	124	66	89	55	21	729
RESURFACING ASR	RESURFACING ASR							95	247	302	208	852
BIOMET COLLARLESS	BIOMET ONE-PIECE CUP					11	182	334	82	11	1	621
EXETER UNIVERSAL	OMNIFIT TRIDENT					67	56	86	113	137	114	573
ELITE PLUS FLANGED	ELITE PLUS LPW	129	113	100	67	84	32	12				537
ELITE PLUS FLANGED	ELITE PLUS OGEE	75	65	100	90	54	54	10				448
BASIS PRIMARY	CONVENE BIPOLAR						35	100	93	105	98	431
PCA MERIDIAN	PCA VITALOCK	57	47	51	48	69	74	58	12	1		417
ABG II	OMNIFIT TRIDENT						23	120	139	93	41	416
RECAP (BIOMET)	RECAP (BIOMET)							36	99	146	119	400
BIOMET COLLARLESS	STANMORE		2	25	46	88	120	86	23	3		393
EXETER UNIVERSAL	TRILOGY	11	149	122	55	28	10	6	4	5	2	392
BIOMET COLLARED	BIOMET VISION	4	18	96	99	114	30	3				364
SYNERGY	REFLECTION INTERFIT								53	185	123	361
EXETER UNIVERSAL	HOWMED DOUBLE CUP	57	35	50	81	79	44	14				360
BIOMET COLLARLESS	BIOMET EXCEED HAP				4	97	101	91	30	2	18	343
SUMMIT (DePuy)	RESURFACING ASR							12	64	113	154	343
VECTRA 3 STD	MATHYS RM HA		34	72	107	89	15					317
CPT (ZIMMER)	TRILOGY		18	38	22	54	48	36	44	30	20	310
DUROM RESURFACING	DUROM RESURFACING							1	114	98	96	309

Table H2. HIP PROSTHESES, OVER 100 IMPLANTS REMOVED IN 1998 – 2007

FEMORAL STEM	1998	1999	2000	2001	2002	2003	2004	2005	2006	2007	Total
LINK LUBINUS SP II	98	83	77	84	81	81	77	64	57	47	749
EXETER UNIVERSAL	29	40	53	64	50	78	66	72	79	67	598
LINK LUBINUS IP	72	65	60	50	31	20	26	30	21	13	388
THOMPSON	63	54	53	42	46	42	20	23	21	12	376
MATHYS RM ISOELA	50	46	33	39	34	24	28	38	38	18	348
BIOMET COLLARLES	27	40	29	17	30	20	29	44	43	52	331
ELITE PLUS FLANG	31	27	28	34	24	26	21	24	17	10	242
CHARNLEY	33	30	28	29	28	18	28	11	13	18	236
MÜLLER MONOLOG	29	27	23	36	25	19	15	22	24	11	231
AUSTIN-MOORE	27	27	20	27	20	12	9	13	7	3	165
LINK LUBINUS SP	23	21	22	24	19	24	6	4	3	3	149
LINK RS	16	20	9	15	18	17	13	13	12	5	138
BIOMET COLLARED	20	22	11	14	17	6	10	8	8	7	123
ABG HA	7	10	11	13	10	10	11	11	11	15	109
ABG II	0	0	2	3	7	13	19	21	18	17	100

Figure H3a. Primary Total Hip Arthroplasty operations performed in different Hospital Districts / 100 000 inhabitants in 2007

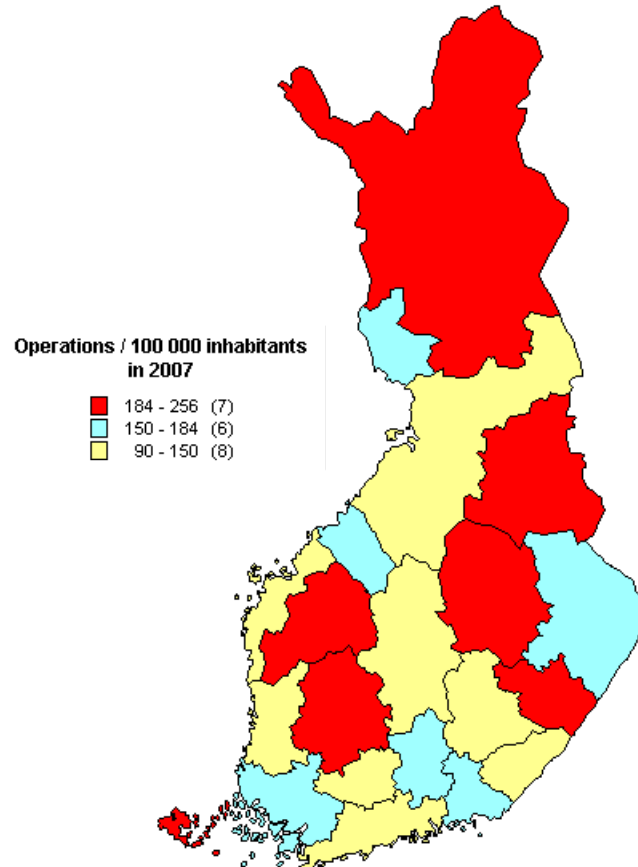


Figure H3b. Primary Total Hip Arthroplasty operations performed in different Hospital Districts / 100 000 inhabitants, average of the years 2003 – 2007

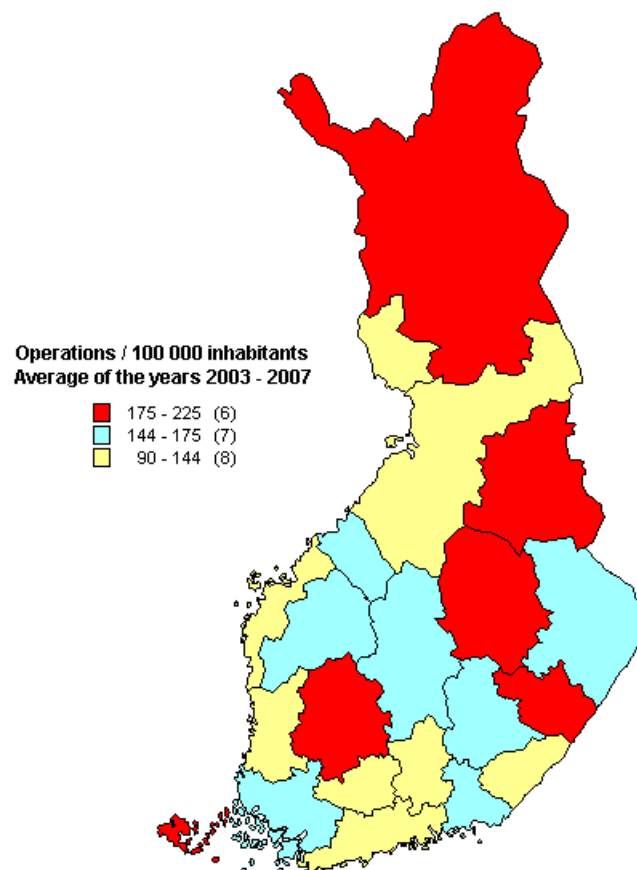


Figure H4. The ratio-% revision and primary Total Hip Arthroplasty operations in different Hospital Districts in 2007

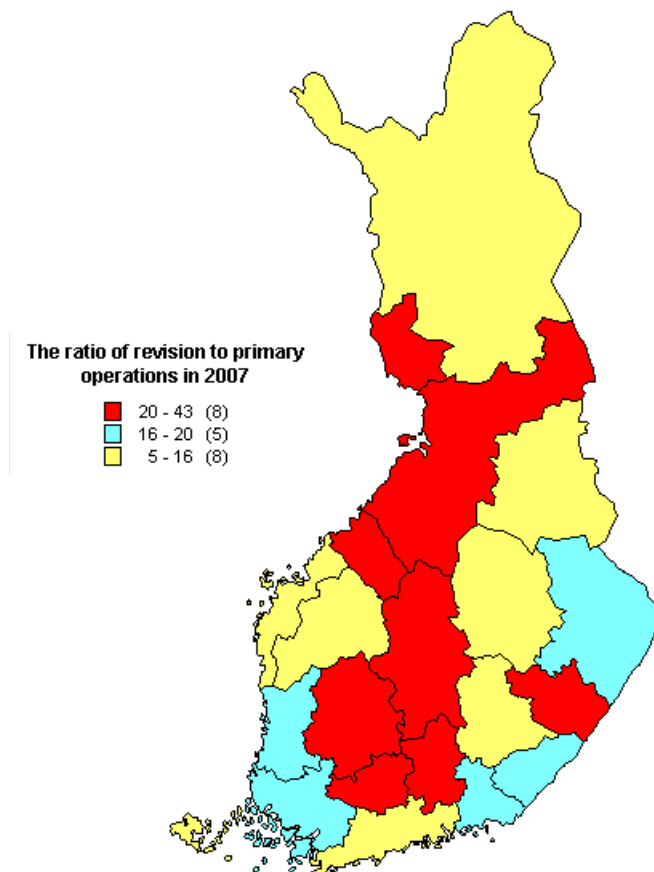


Figure H5. Primary and revision Total Hip Arthroplasty operations in 1988 – 2007

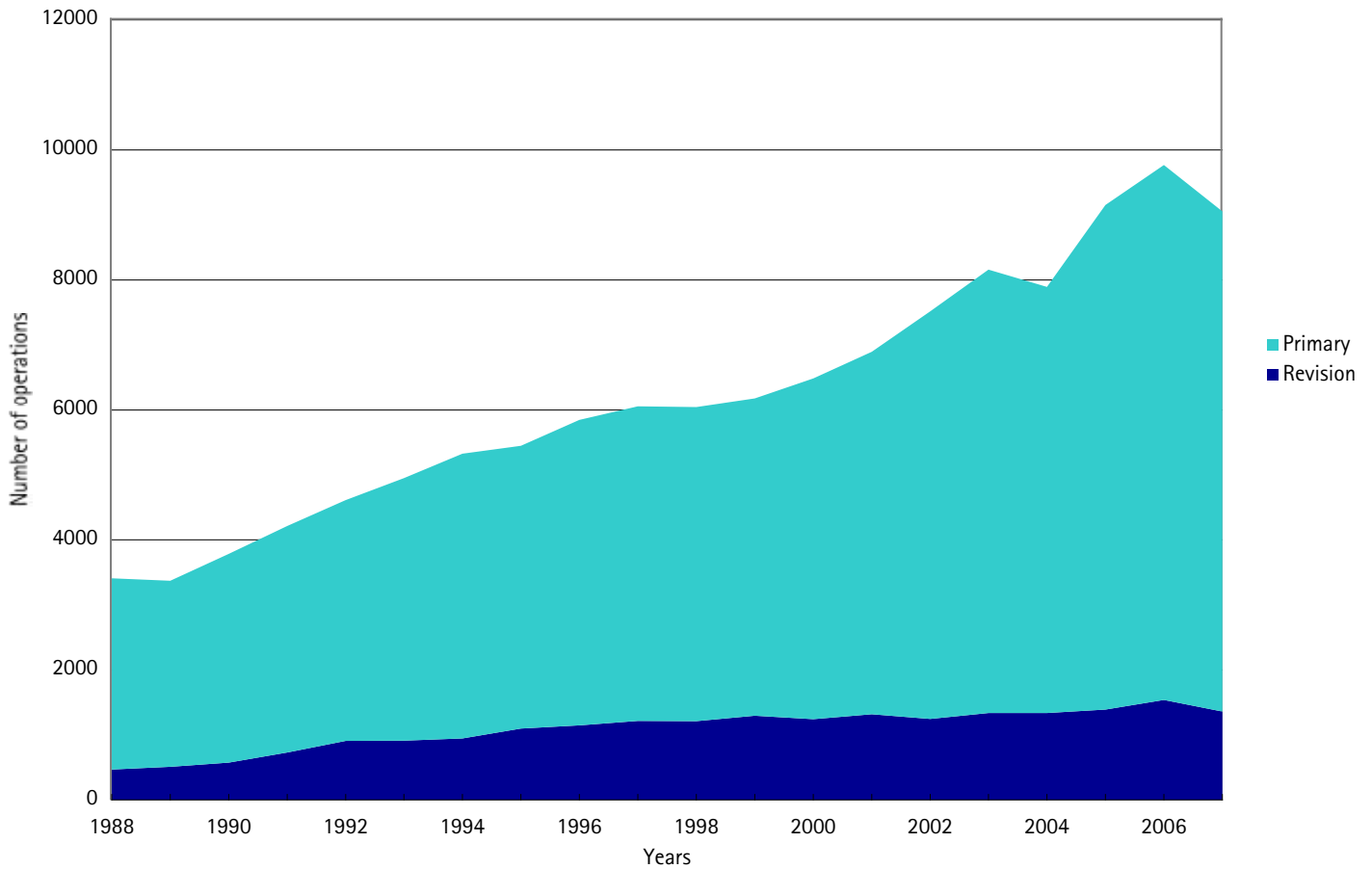


Figure H6. Primary indications for Total Hip Arthroplasty operations in 1988 – 2007

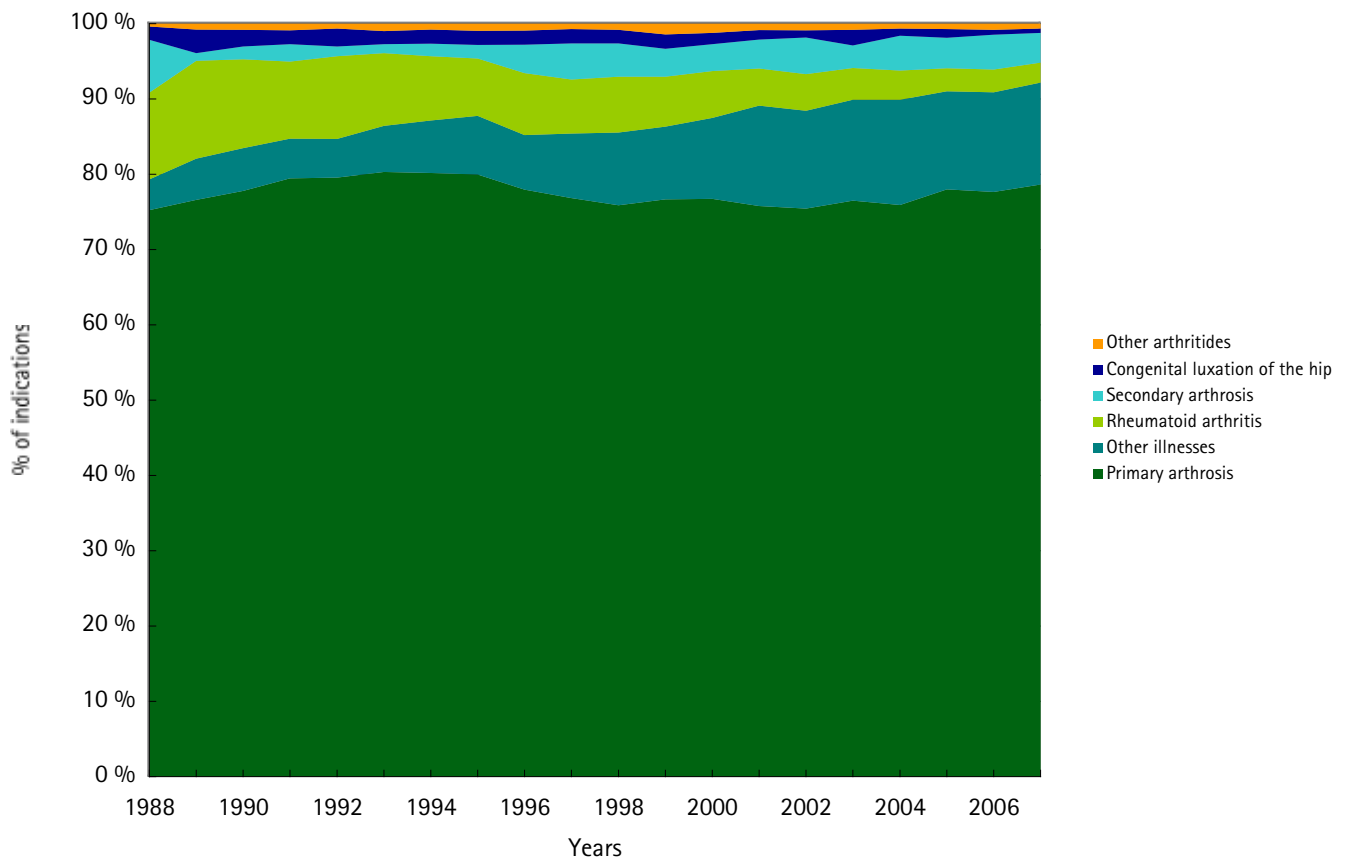


Figure H7a. Fixation technique in primary Total Hip Arthroplasties in 1998 - 2007 FEMORAL COMPONENT

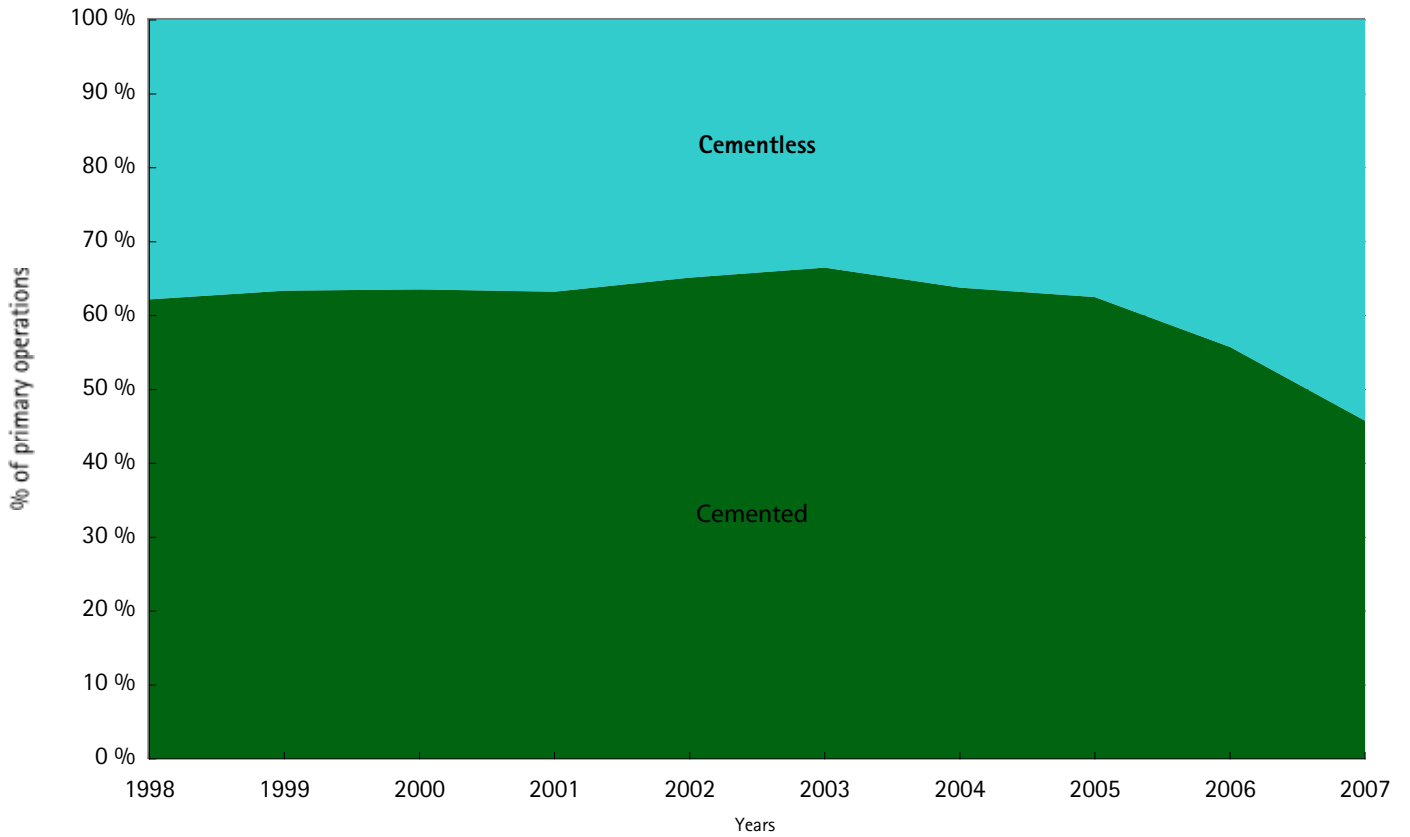


Figure H7b. Fixation technique in primary Total Hip Arthroplasties in 1998 - 2007 ACETABULUM COMPONENT

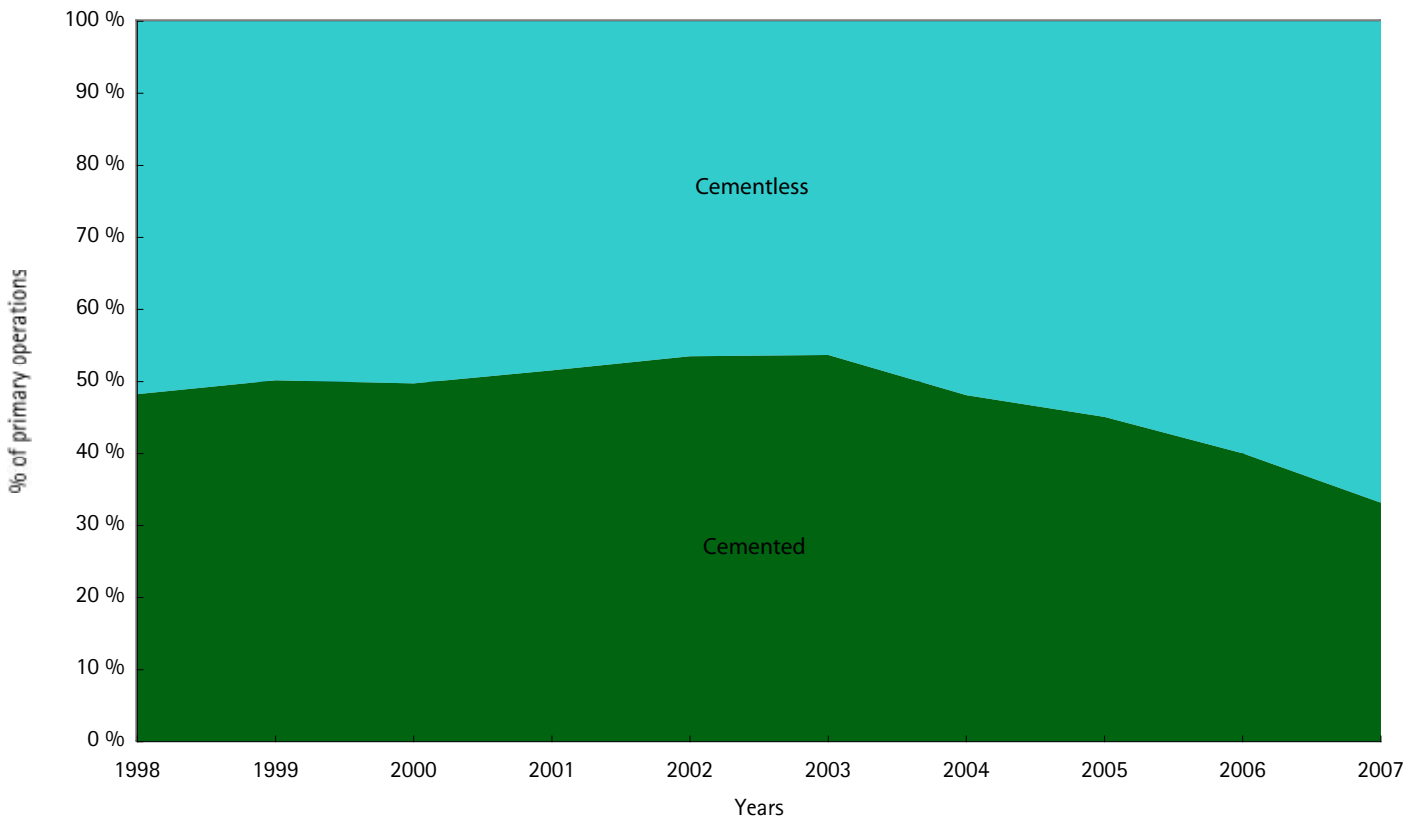


Figure H8a. Age distribution of Total Hip Arthroplasty operations in 2003 - 2007, Female

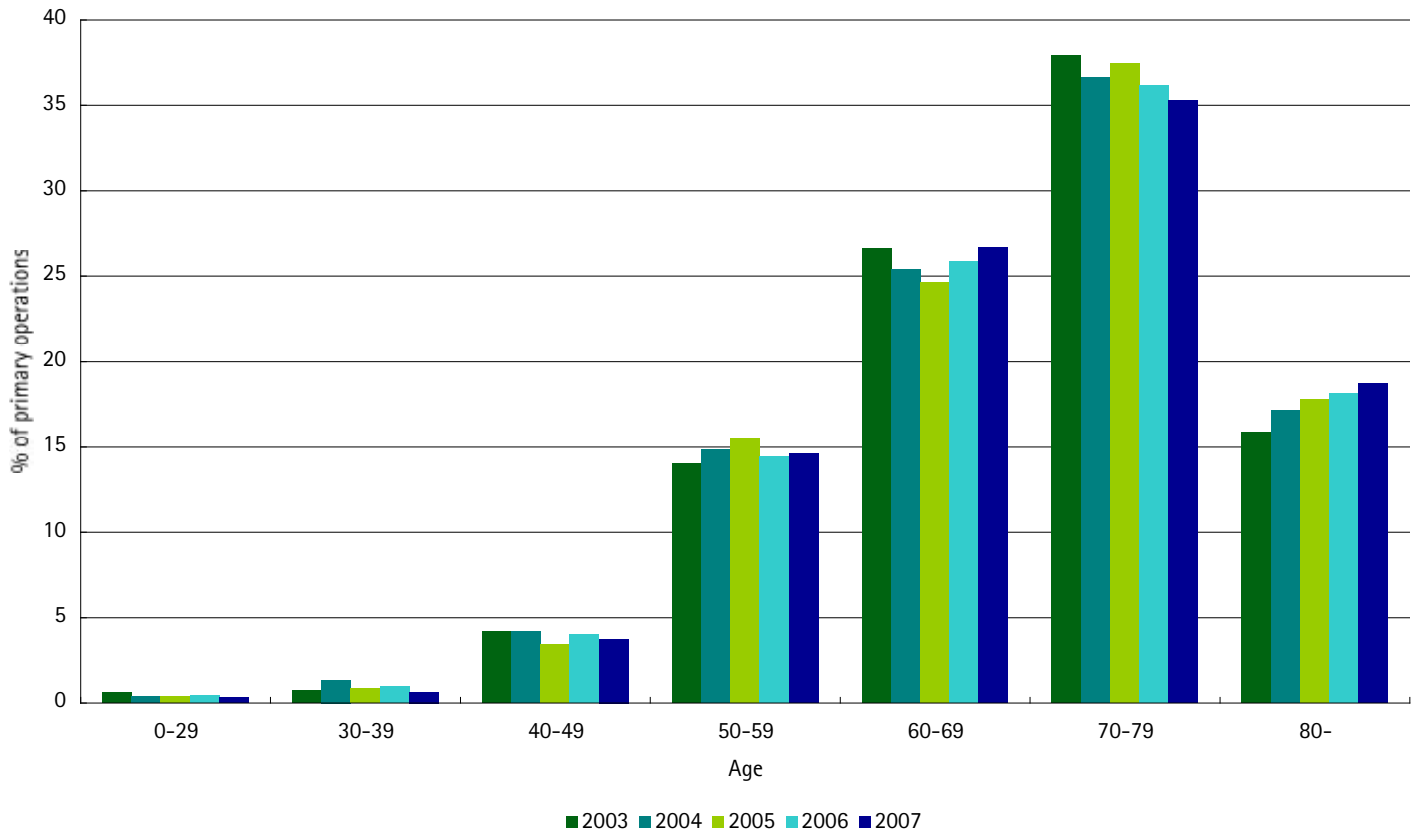


Figure H8b. Age distribution of Total Hip Arthroplasty operations in 2003 - 2007, Male

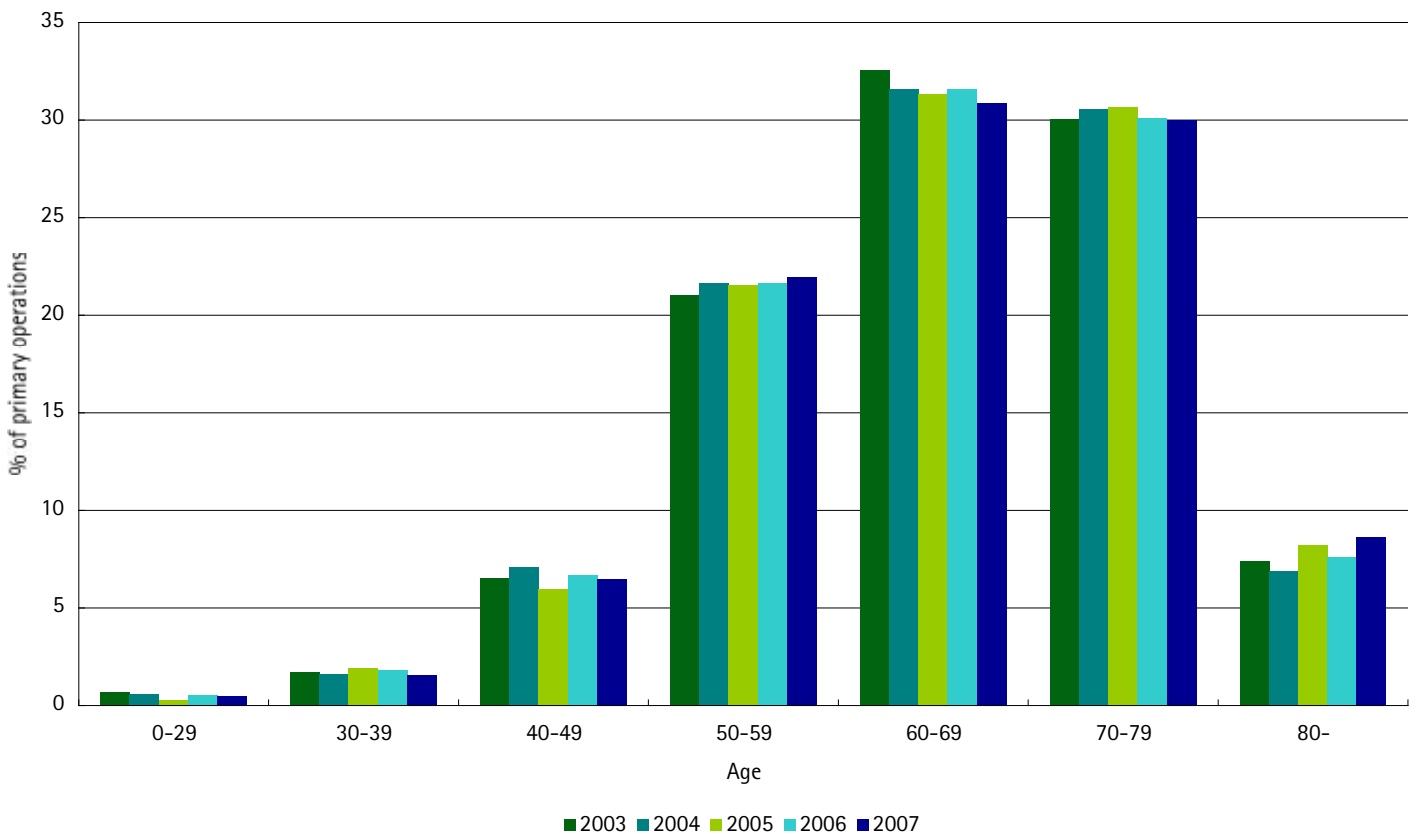


Figure H9a. Revision Total Hip Arthroplasty operations performed in different Hospital Districts / 100 000 inhabitants in 2007

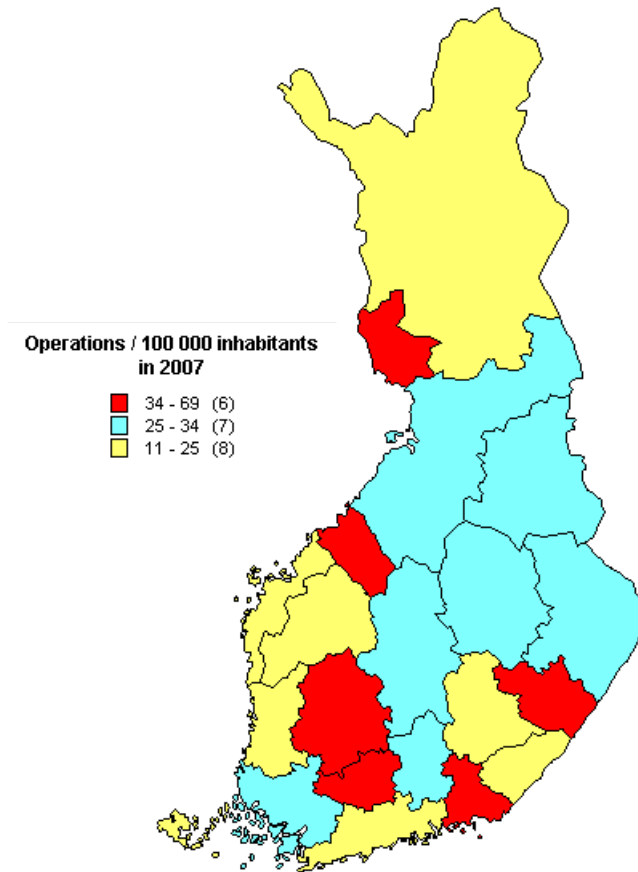


Figure H9b. Revision Total Hip Arthroplasty operations performed in different Hospital Districts / 100 000 inhabitants, average of the years 2003 – 2007

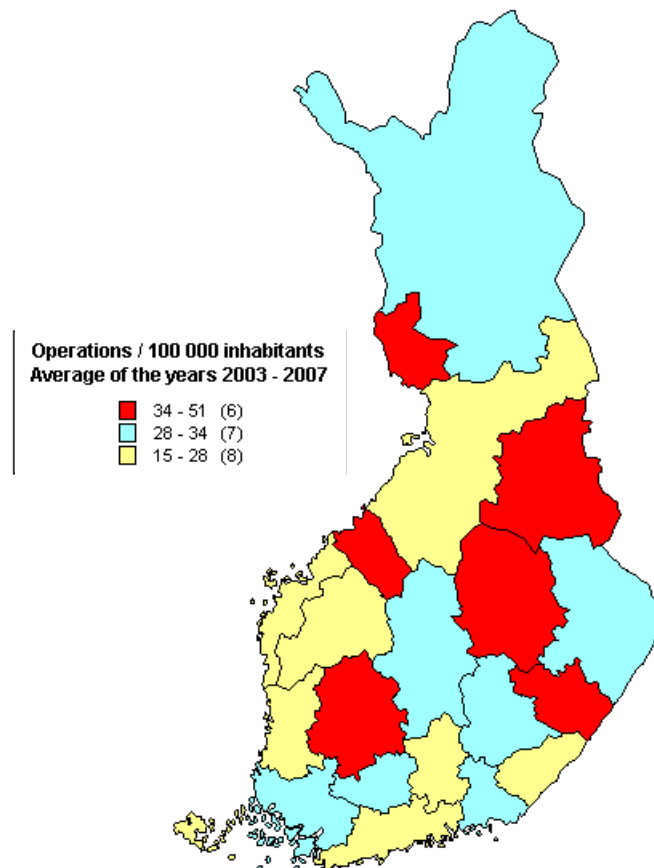


Figure H10. Number of hospitals performing Total Hip Arthroplasties in 1988 – 2007

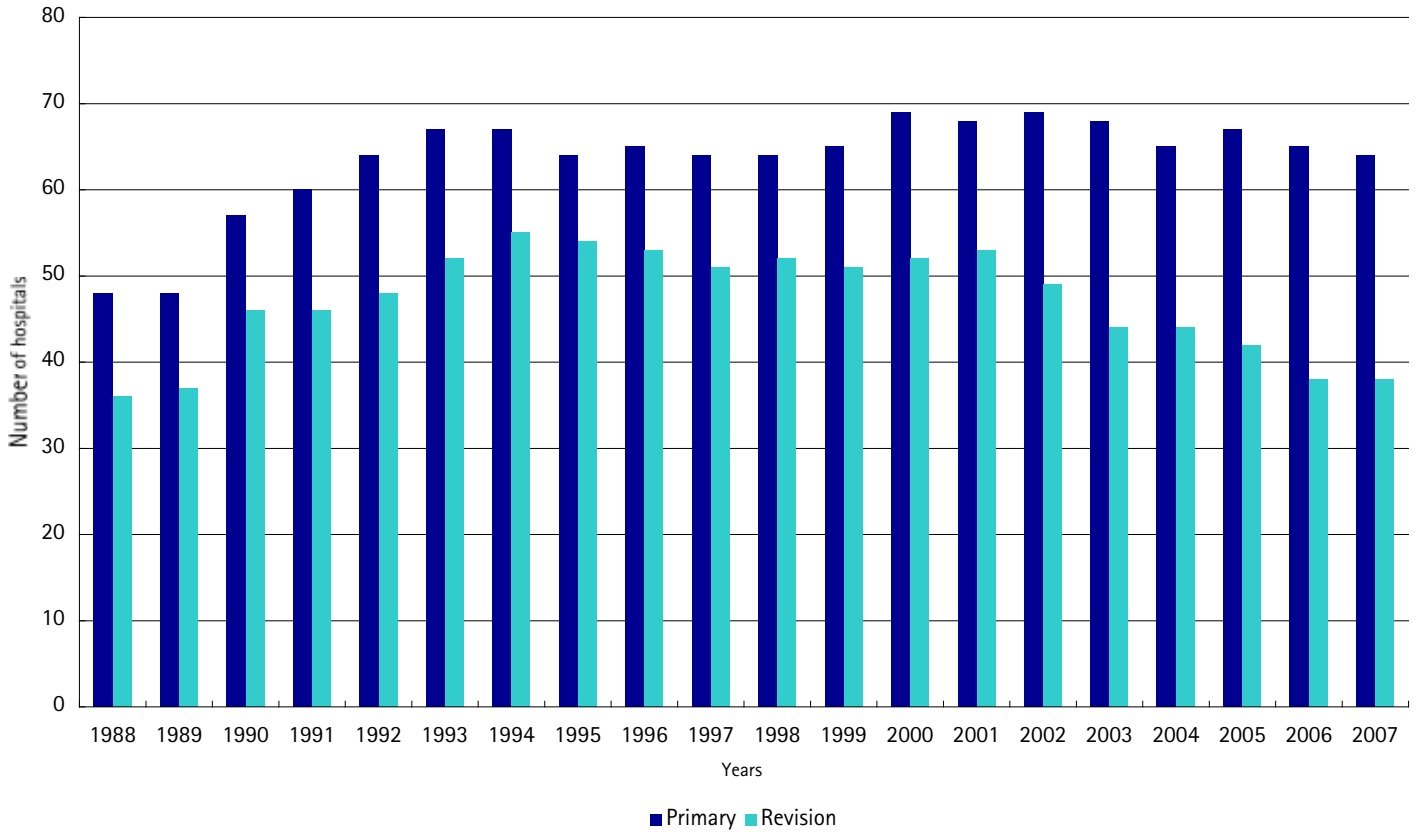


Figure H11. Indications for Total Hip Arthroplasty revisions in 1998 – 2007

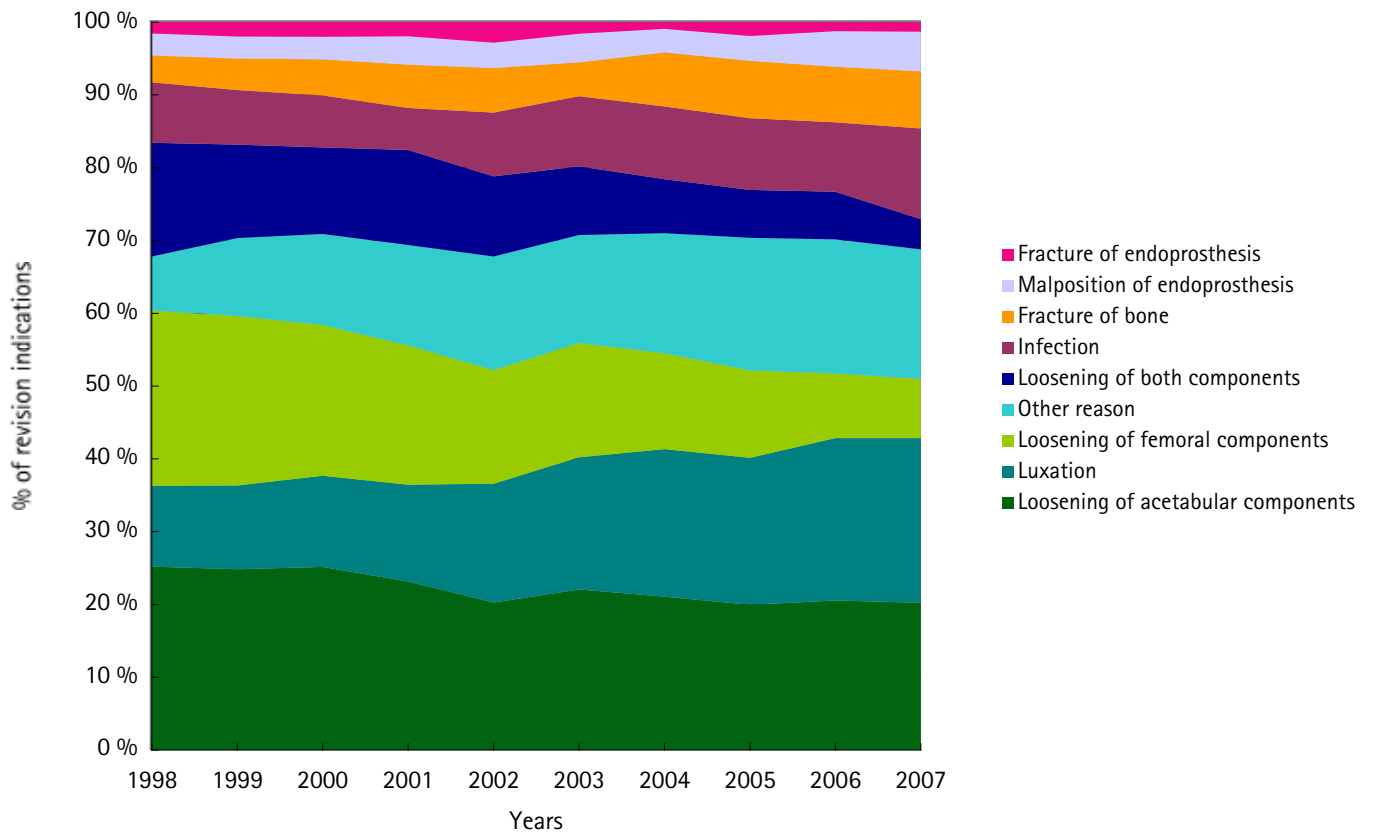


Figure H12a. The most common types of removed femoral components in Total Hip Arthroplasty operations in 1998 – 2007

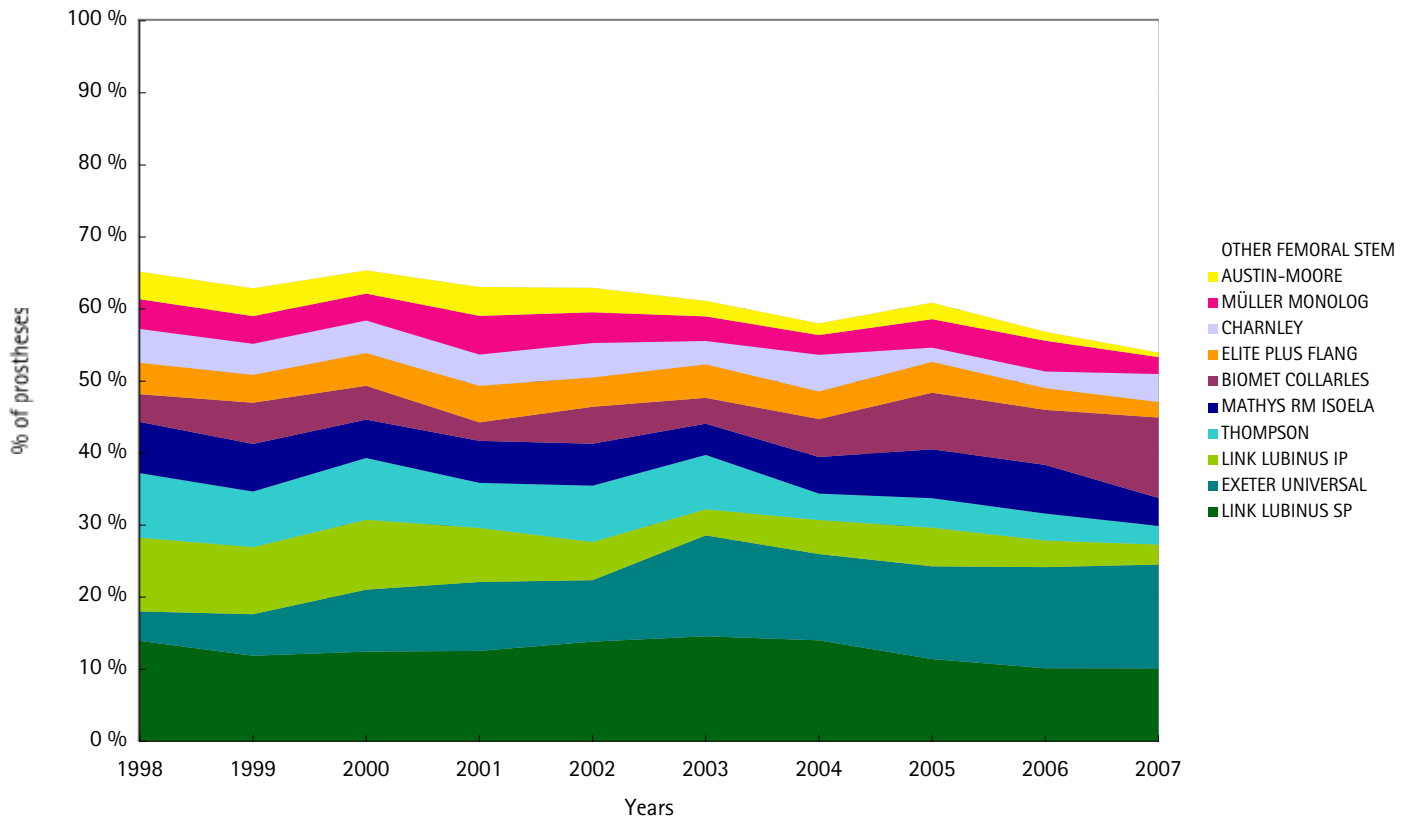


Figure H12b. The most common types of removed acetabular components in Total Hip Arthroplasty operations in 1998 – 2007

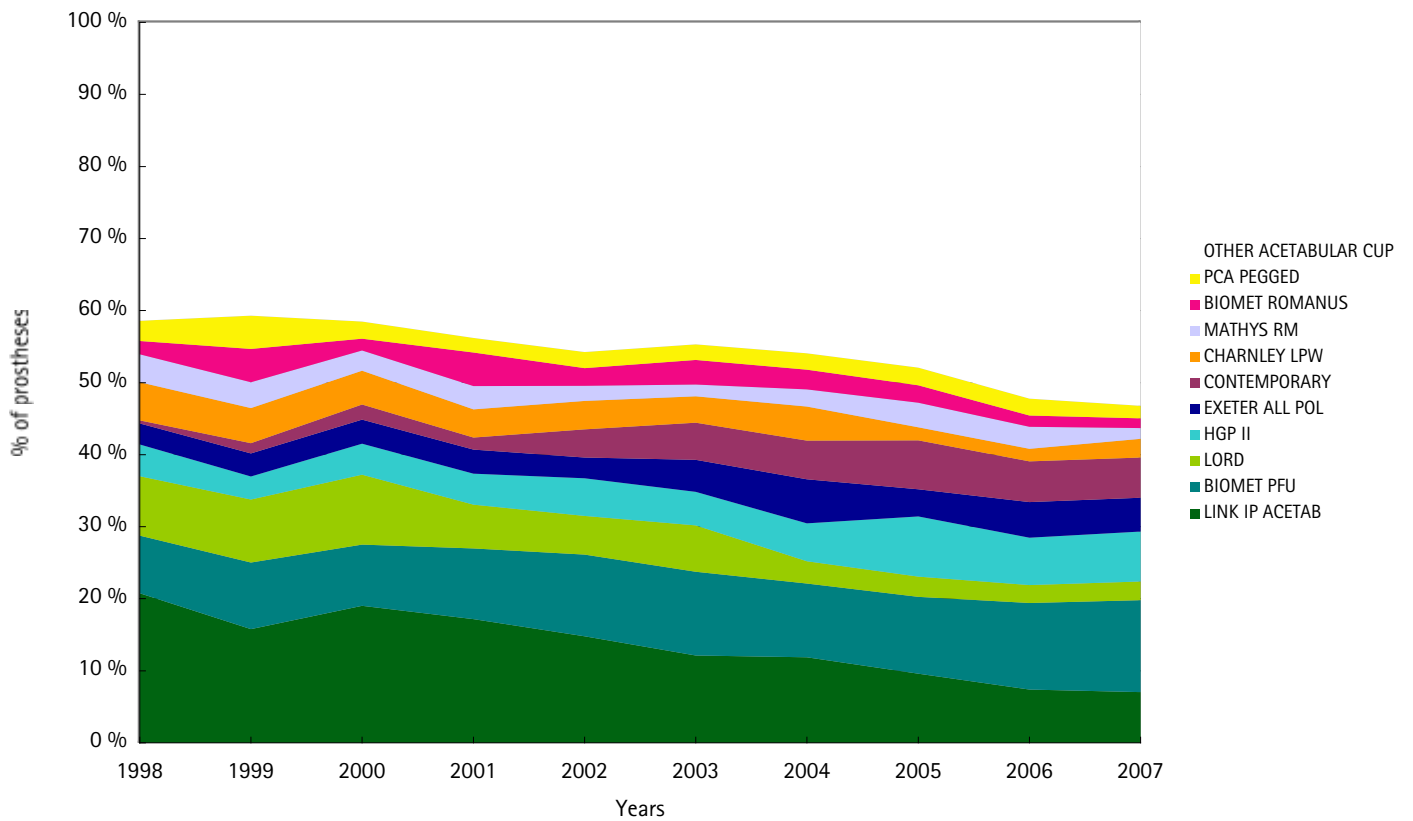


Figure H13. Previous operation year
in Total Hip Arthroplasty revisions in 2007

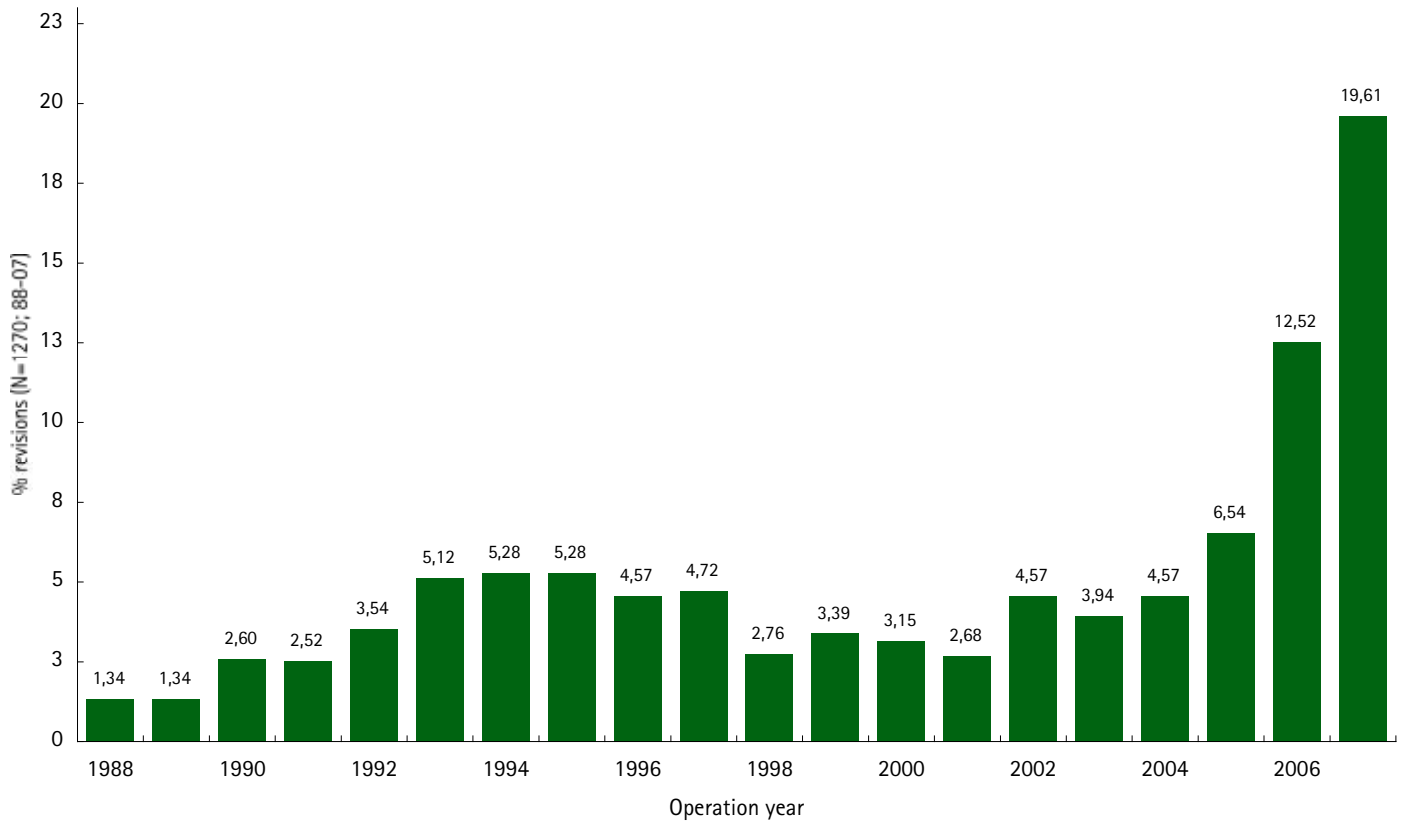


Figure H14a. The most common types of femoral components used in Total Hip Arthroplasty revision in 1998 – 2007

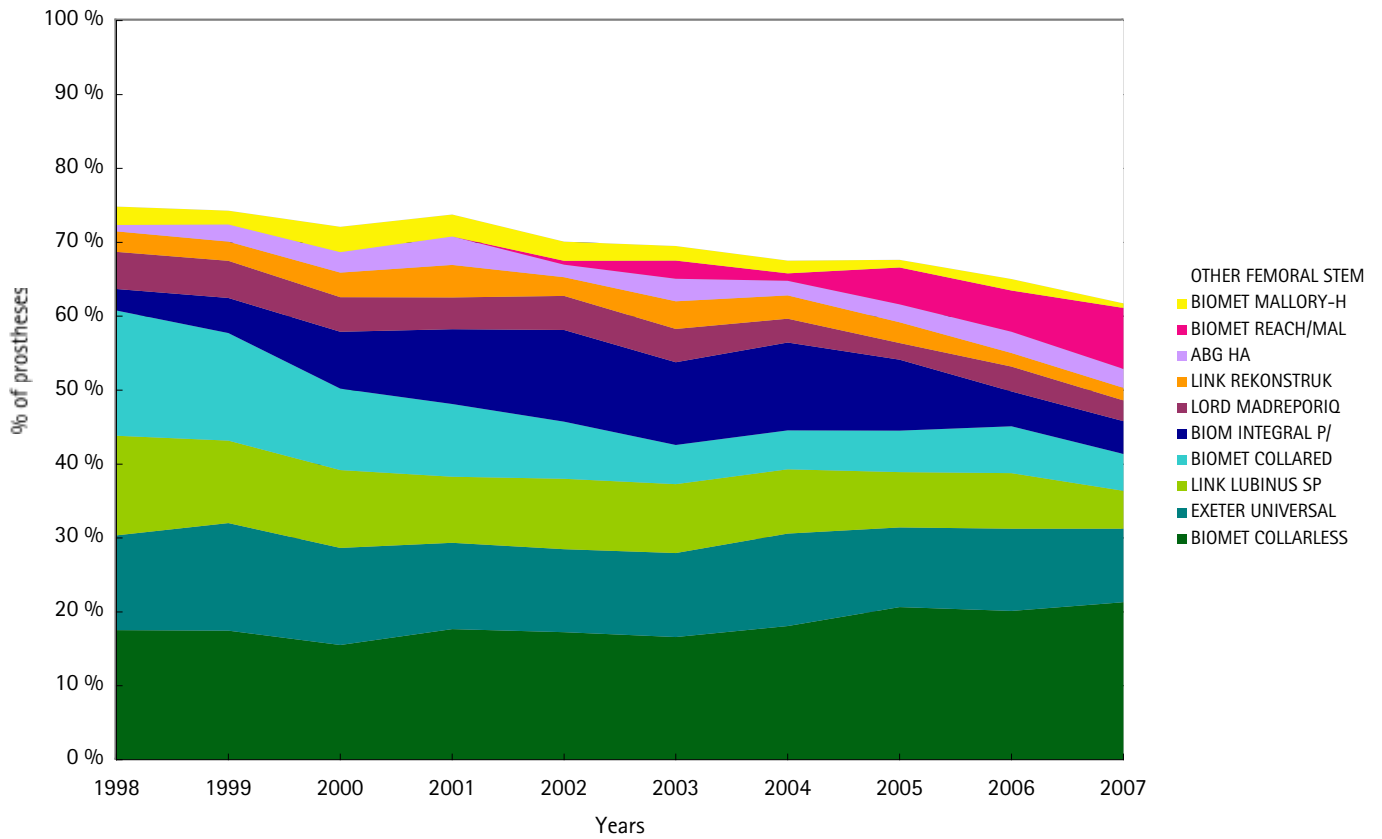


Figure H 14b. The most common types of acetabular components used in Total Hip Arthroplasty revision in 1998 – 2007

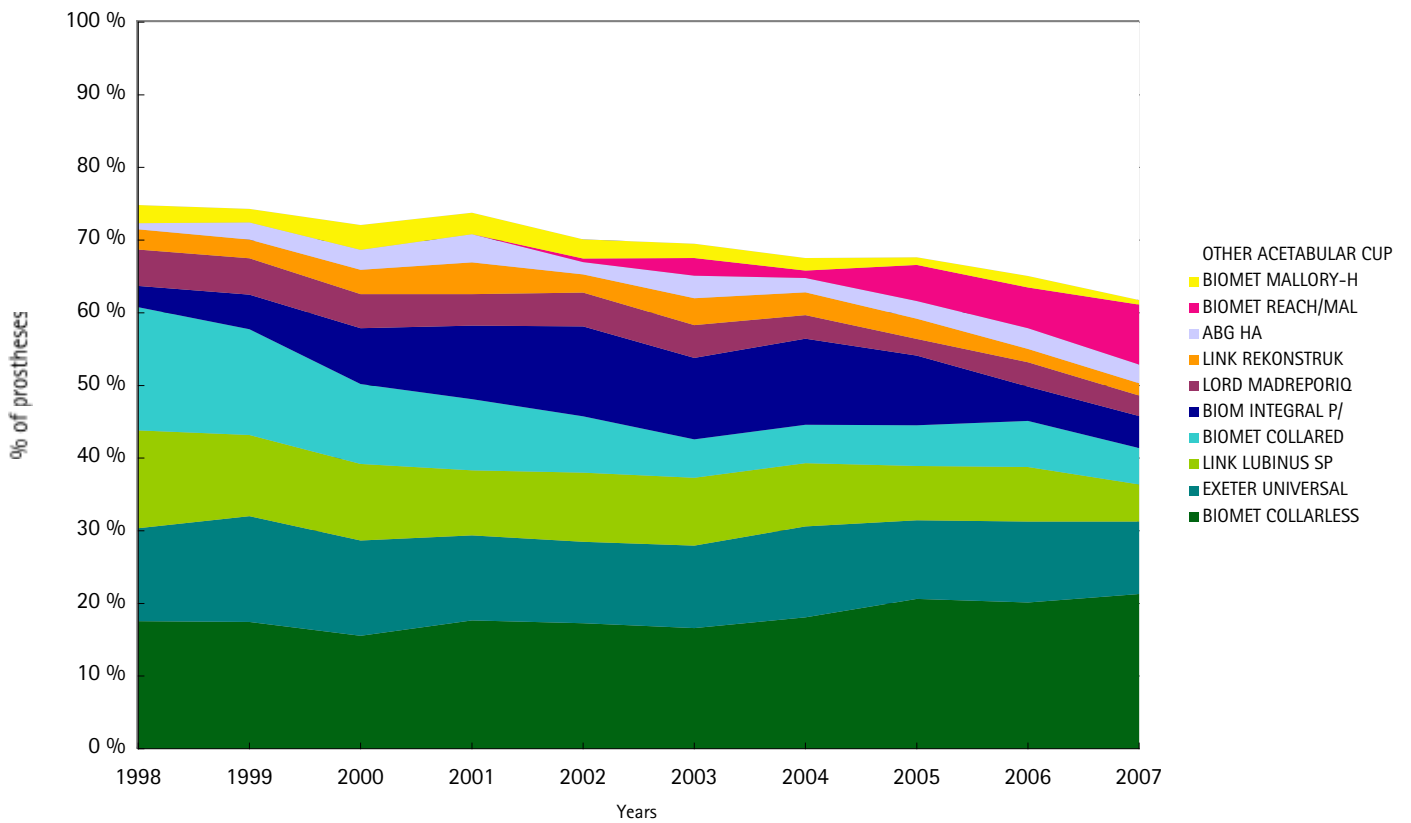


Figure H15. The most common bone cements used in Hip Arthroplasties in 1998 – 2007

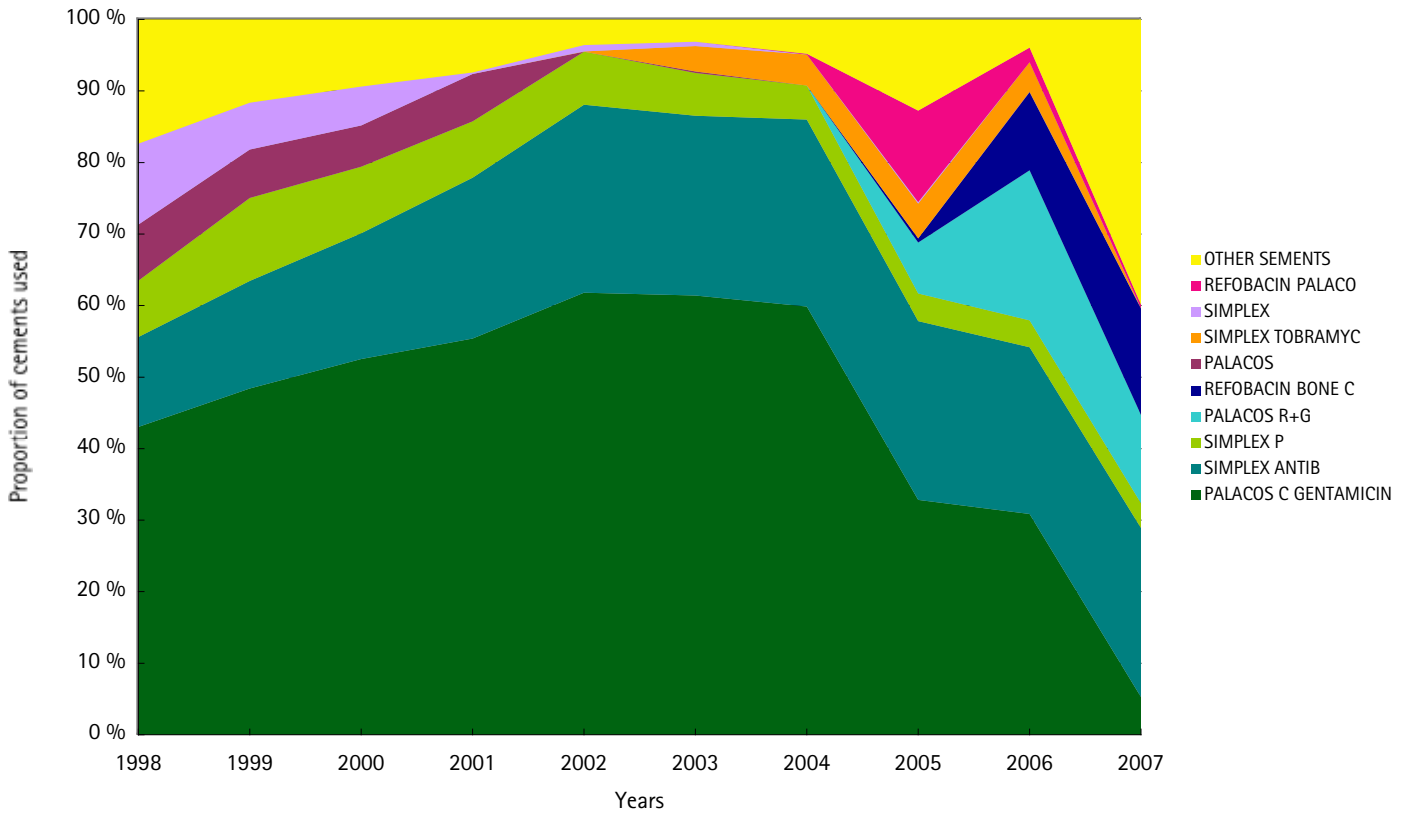


Figure H16. The most common antibiotics prophylaxis used in Hip Arthroplasties in 1998 – 2007

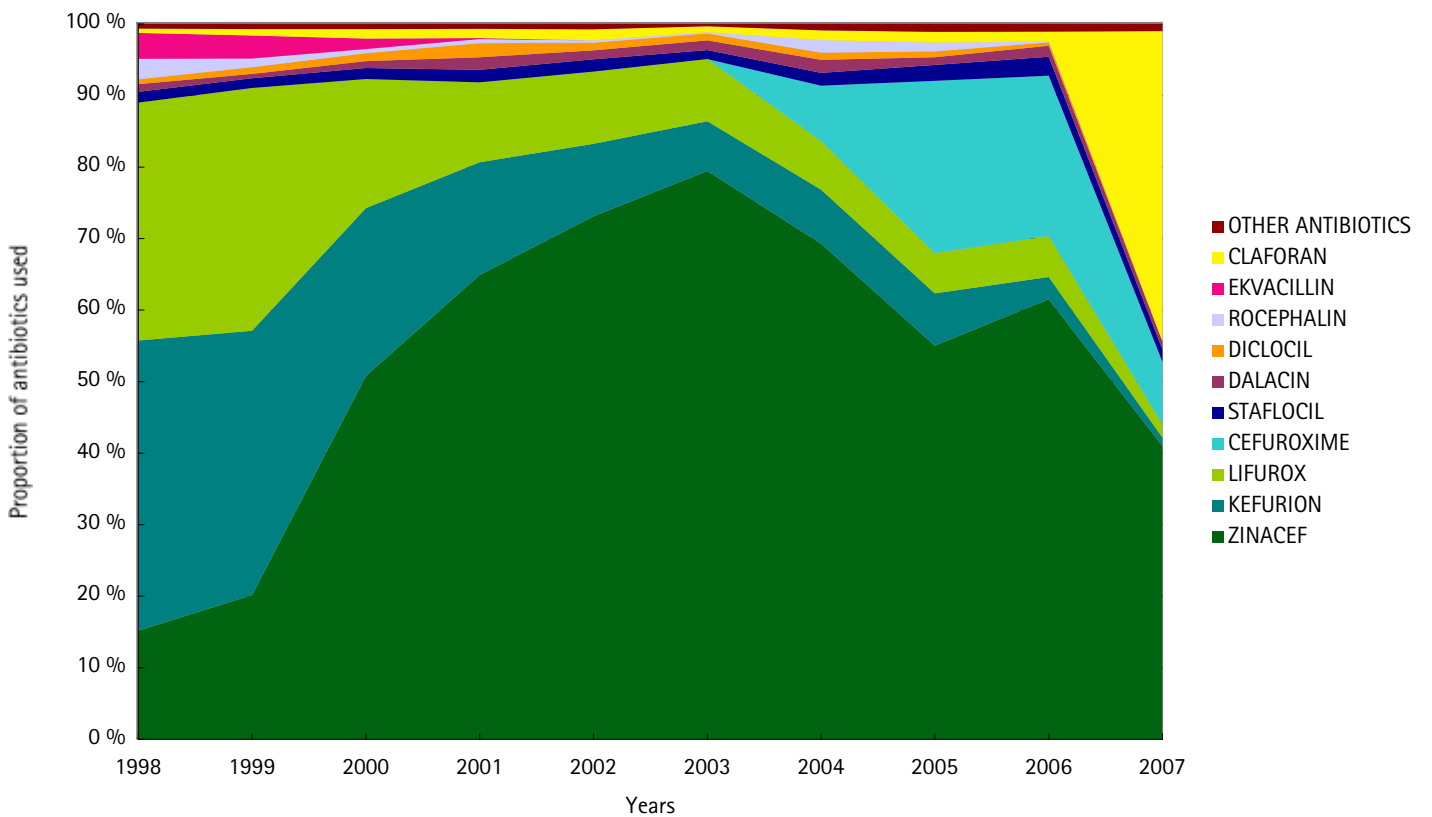


Figure H17. Allograft, Autograft and Xenograft in Hip revisions in 1998 – 2007

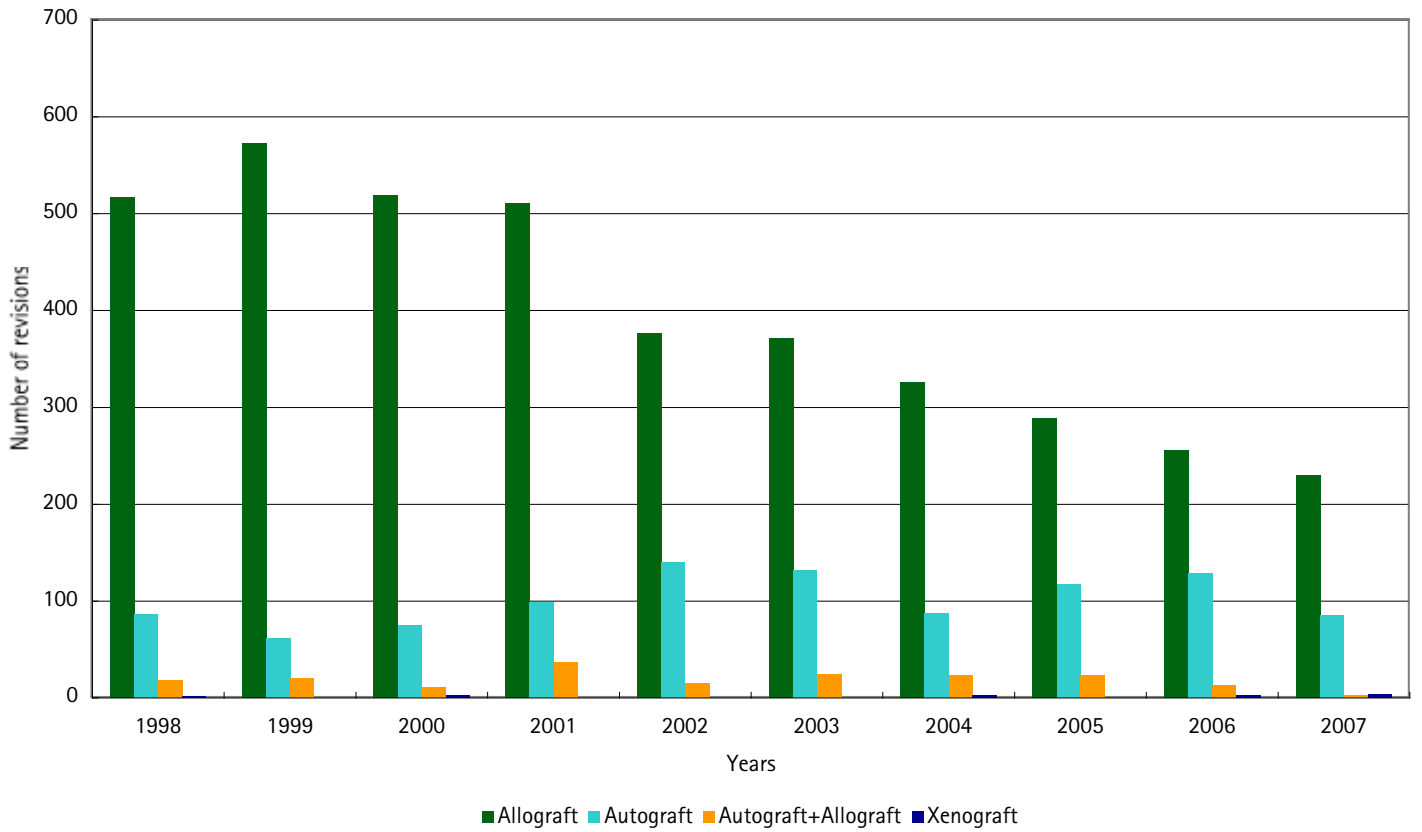


TABLE K1. TOTAL KNEE PROSTHESES USED IN PRIMARY OPERATIONS IN 1998 – 2007

FEMORAL STEM	1998	1999	2000	2001	2002	2003	2004	2005	2006	2007	Total
DURACON	1602	1634	1620	1919	2112	2539	2366	2454	1823	964	19033
AGC V2	1317	1292	1255	1146	1239	1180	997	1218	856	265	10765
P.F.C SIGMA	291	554	587	629	651	949	977	1246	1362	1689	8935
NEXGEN LPS	116	146	262	271	339	368	401	746	818	707	4174
NEXGEN CR	103	187	233	331	556	464	177	490	897	475	3913
P.F.C SIGMA STAB	7	24	81	96	169	349	512	746	1094	809	3887
TRIATHLON CR	0	0	0	0	0	0	0	382	1018	1852	3252
OXFORD UNICOMPAR	0	17	115	189	340	392	379	419	514	463	2828
ARGE	156	223	282	212	348	264	216	270	253	211	2435
MAXIM PRIMARY	30	107	193	150	123	221	310	529	471	148	2282
VANGUARD CR	0	0	0	0	0	0	0	83	293	773	1149
DURACON STABILIZ	19	17	45	84	109	140	144	161	69	31	819
TRIATHLON PS	0	0	0	0	0	0	0	41	167	254	462
NEXGEN CR FLEX M	0	0	0	0	0	0	0	0	153	308	461
DURACON/MODULAR	10	23	20	23	47	60	74	45	54	36	392
MAXIM PS	8	0	0	36	21	48	70	105	48	3	339
NEXGEN LPS FLEX	0	0	0	0	0	0	4	3	61	266	334
P.F.C SIGMA TC3	12	19	16	25	25	40	30	41	66	35	309
AGC V2 STAB	13	17	37	37	63	60	34	22	21	3	307
LINK ENDO-MODEL	30	22	25	27	27	16	21	31	40	33	272
VANGUARD PS	0	0	0	0	0	0	0	27	126	107	260
GENESIS II	18	51	53	41	26	12	9	6	1	0	217
P.F.C PRESS FITT	190	0	0	0	0	0	0	0	0	0	190
SEARCH EVOLUTION	0	0	0	2	48	38	45	43	2	0	178
AGC DUAL ARTICUL	17	21	30	30	24	12	11	14	8	9	176
NEXGEN LCCK	0	1	6	5	7	10	25	30	31	33	148
SEARCH	36	34	27	40	0	0	0	0	0	0	137
DURACON/ROTATING	0	0	0	5	7	13	8	24	33	38	128
PROFIX NON-POROU	0	0	0	0	0	0	0	10	71	41	122
MILLER-G/UNICOND	27	12	14	16	7	4	2	1	0	0	83
PERFORMANCE	65	13	3	0	0	0	0	0	0	0	81
NEXGEN Rotating	0	0	0	0	0	2	11	22	19	23	77
DURACON ISA	0	0	0	0	0	9	27	15	11	0	62

Table K2.KNEE PROSTHESES, OVER 50 IMPLANTS REMOVED IN 1998 – 2007

FEMORAL STEM	1998	1999	2000	2001	2002	2003	2004	2005	2006	2007	Total
DURACON	44	34	39	41	61	53	88	104	107	78	649
AGC V2	36	23	40	50	62	55	58	70	78	45	517
OXFORD UNICOMP PAR	0	0	2	7	11	11	18	18	36	53	156
MILLER-G I	17	17	14	13	13	20	10	15	7	7	133
PCA	18	22	17	20	16	13	9	5	4	3	127
P.F.C SIGMA	0	6	8	12	10	13	13	16	23	25	126
P.F.C PRESS FITT	14	8	15	7	6	16	8	16	16	14	120
SYNATOMIC TOWNLE	14	16	13	15	11	14	7	4	2	4	100
PCA/MODULAR	15	11	9	9	5	8	9	5	9	7	87
MILLER-G II	7	9	11	3	6	6	9	14	9	2	76
MILLER-G/UNICOND	3	13	11	6	2	10	8	1	13	3	70
AMK	6	6	8	9	7	6	5	6	9	2	64
TOWNLEY	8	10	6	3	11	8	2	6	4	4	62
PERFORMANCE	4	4	6	3	9	8	5	7	6	4	56
PCA-INTERAX DI	7	5	5	5	6	5	6	9	3	3	54
P.F.C SIGMA STAB	0	0	2	1	4	6	1	7	14	15	50

Figure K3a: Primary TKA operations performed in different Hospital Districts/100 000 inhabitants in 2007

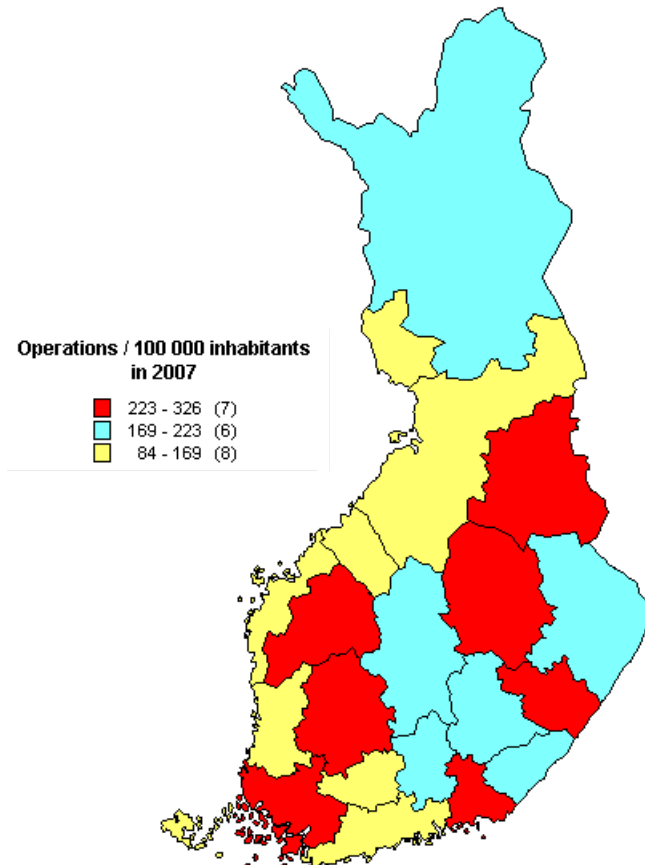


Figure K3b: Primary TKA operations performed in different Hospital Districts/100 000 inhabitants, average of the years 2003 - 2007

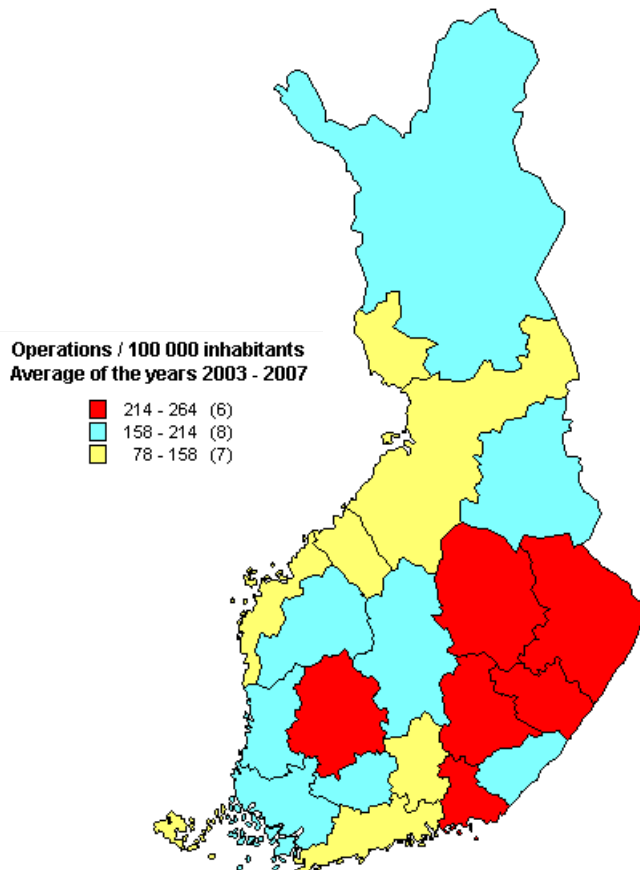


Figure K4: The ratio-% of revision and primary TKA operations in different Hospital Districts in 2003

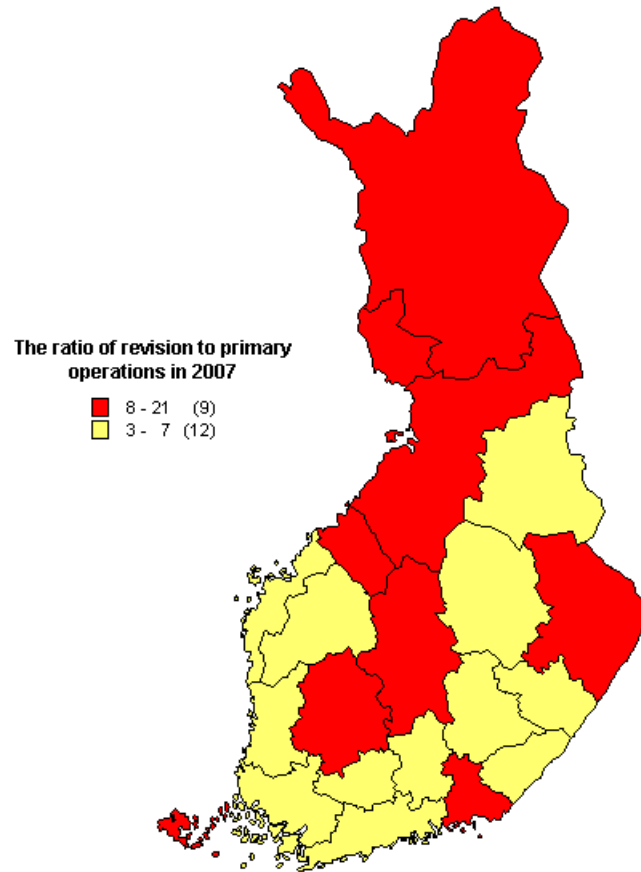


Figure K5: Primary and revision TKA operations in 1988 - 2007

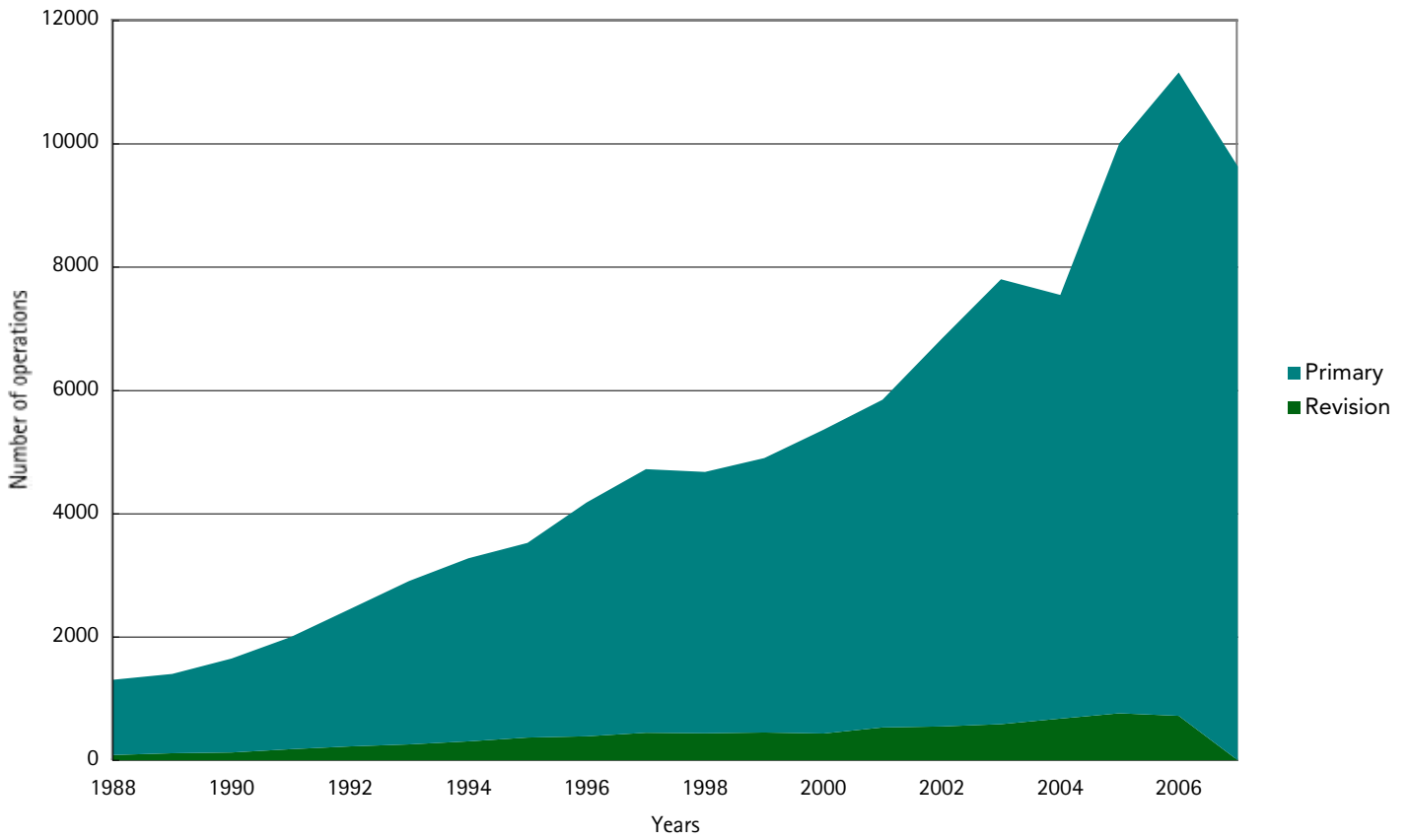


Figure K6: Primary Indications for TKA in 1988 - 2007

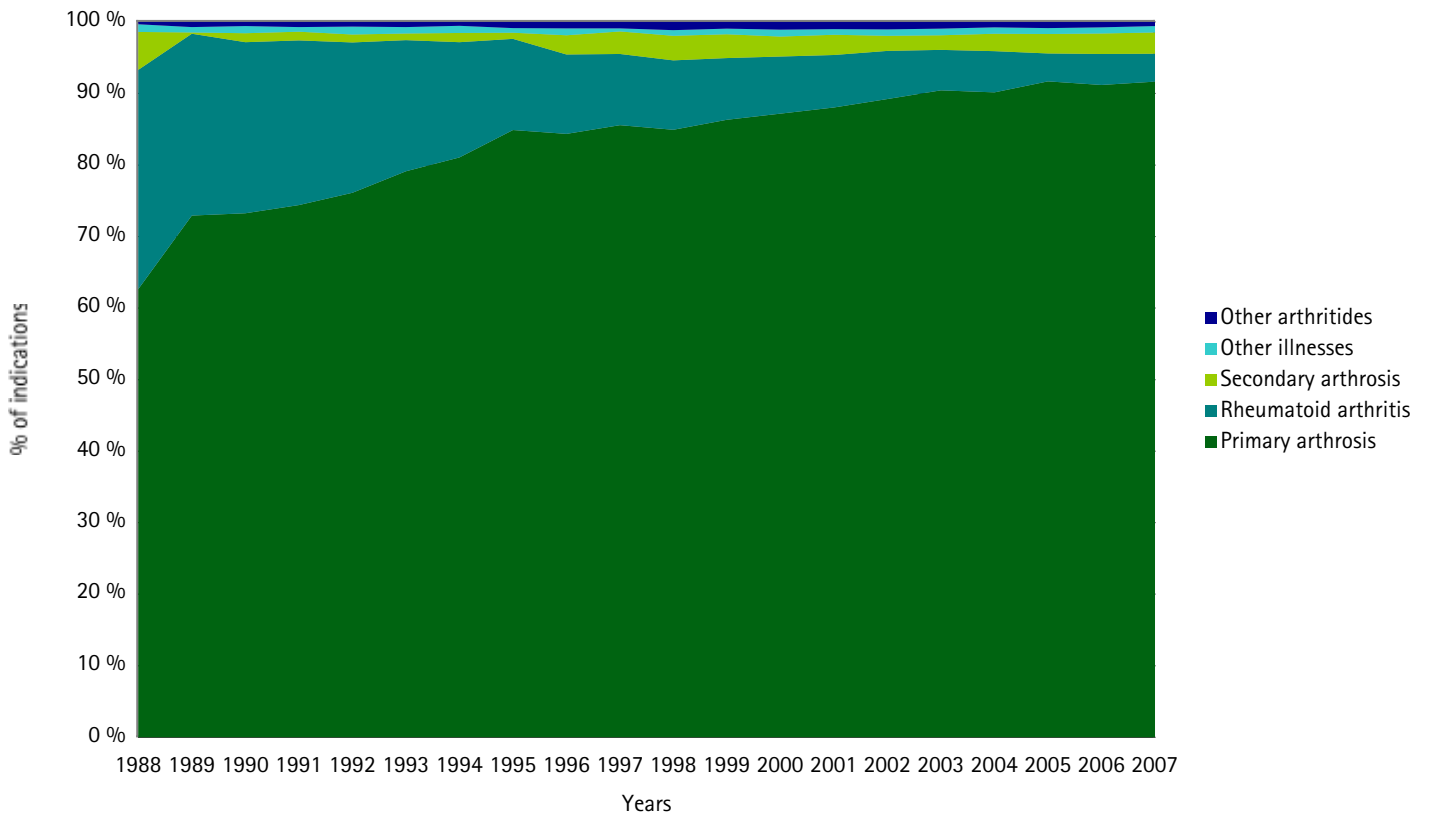


Figure K7a: Fixation technique in primary TKA in 1988 – 2007, femoral component

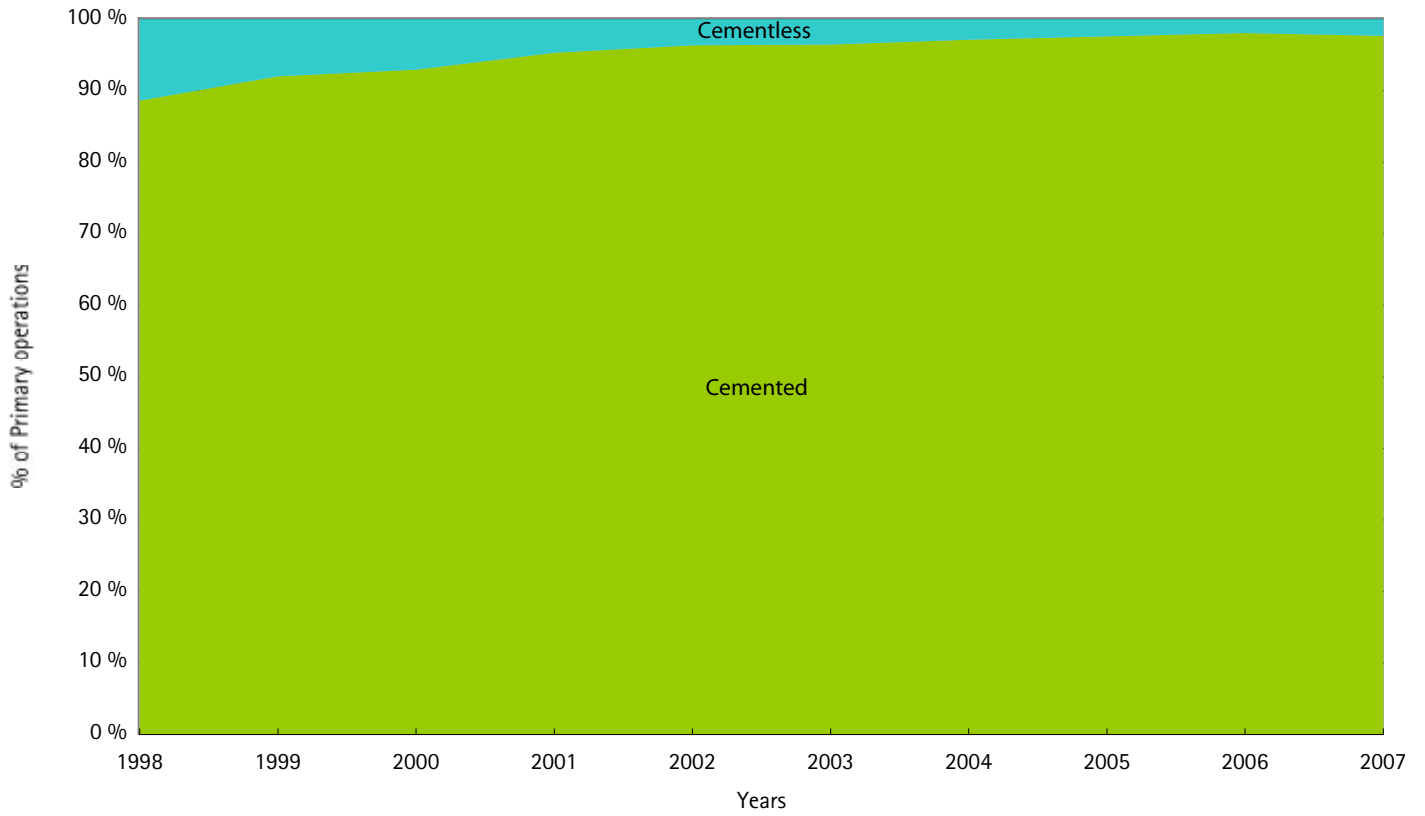


Figure K7b: Fixation technique in primary TKA in 1988 – 2007, tibial component

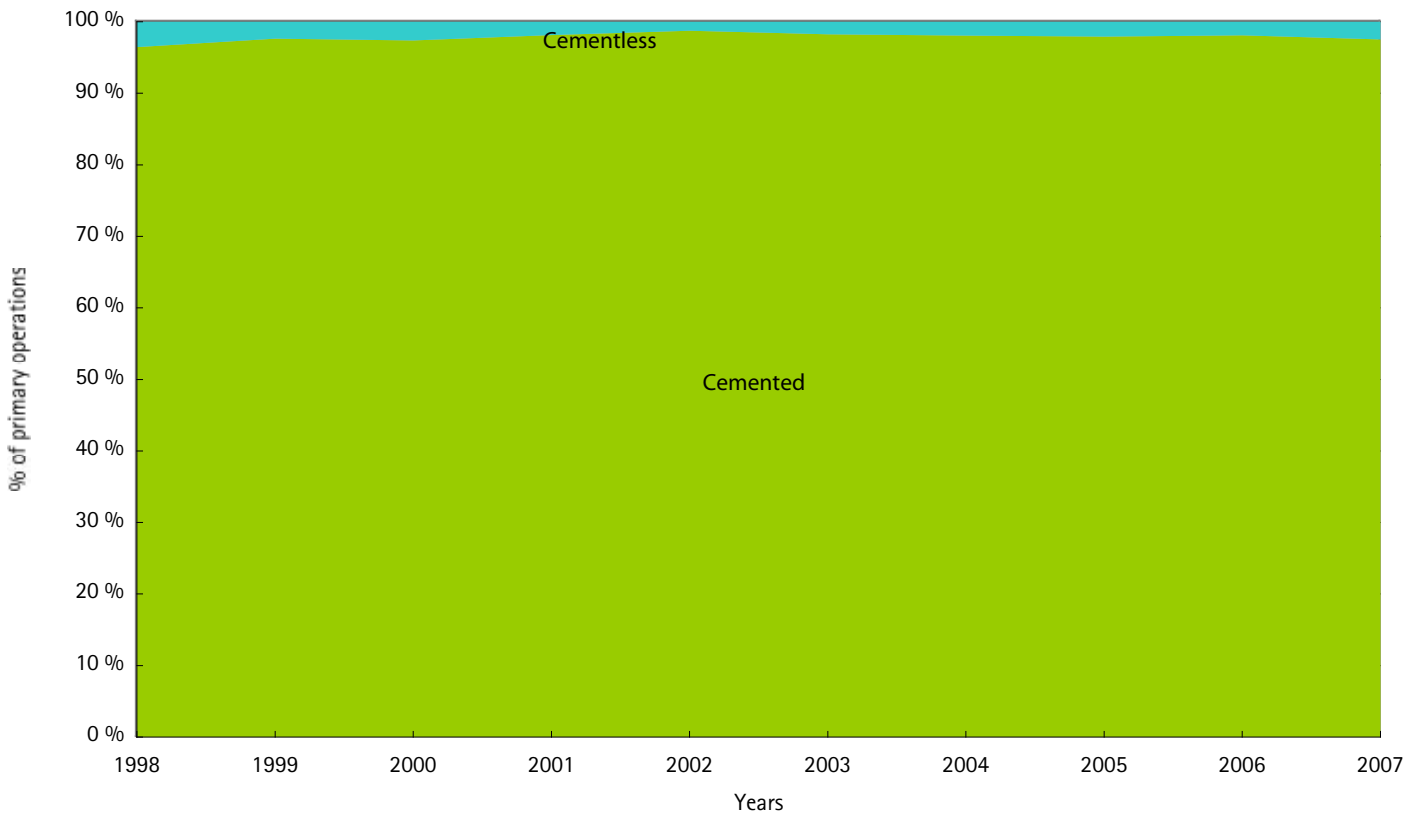


Figure K8a: Age distribution of TKA operations in 2003 - 2007, female

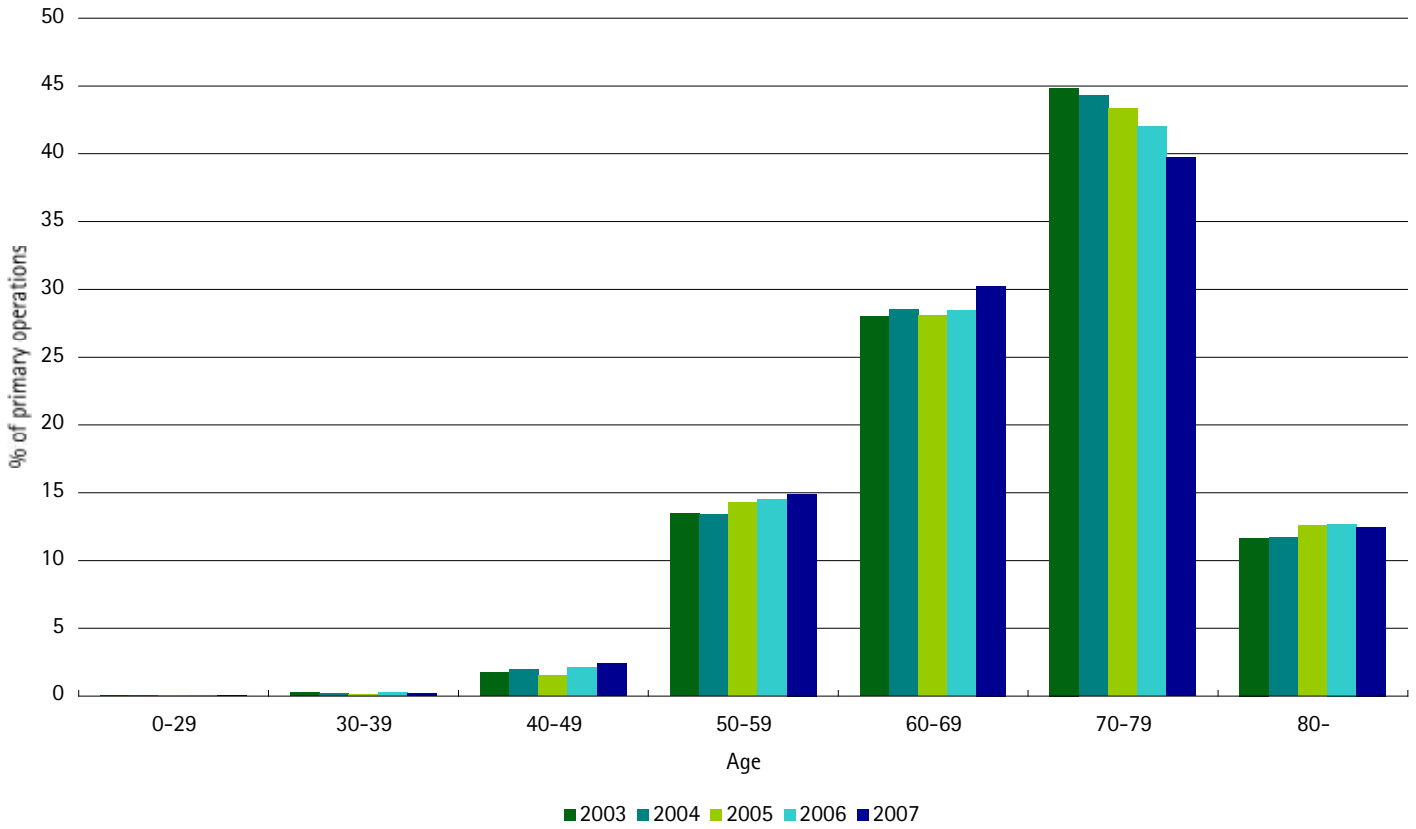


Figure K8b: Age distribution of TKA operations in 2003 - 2007, male

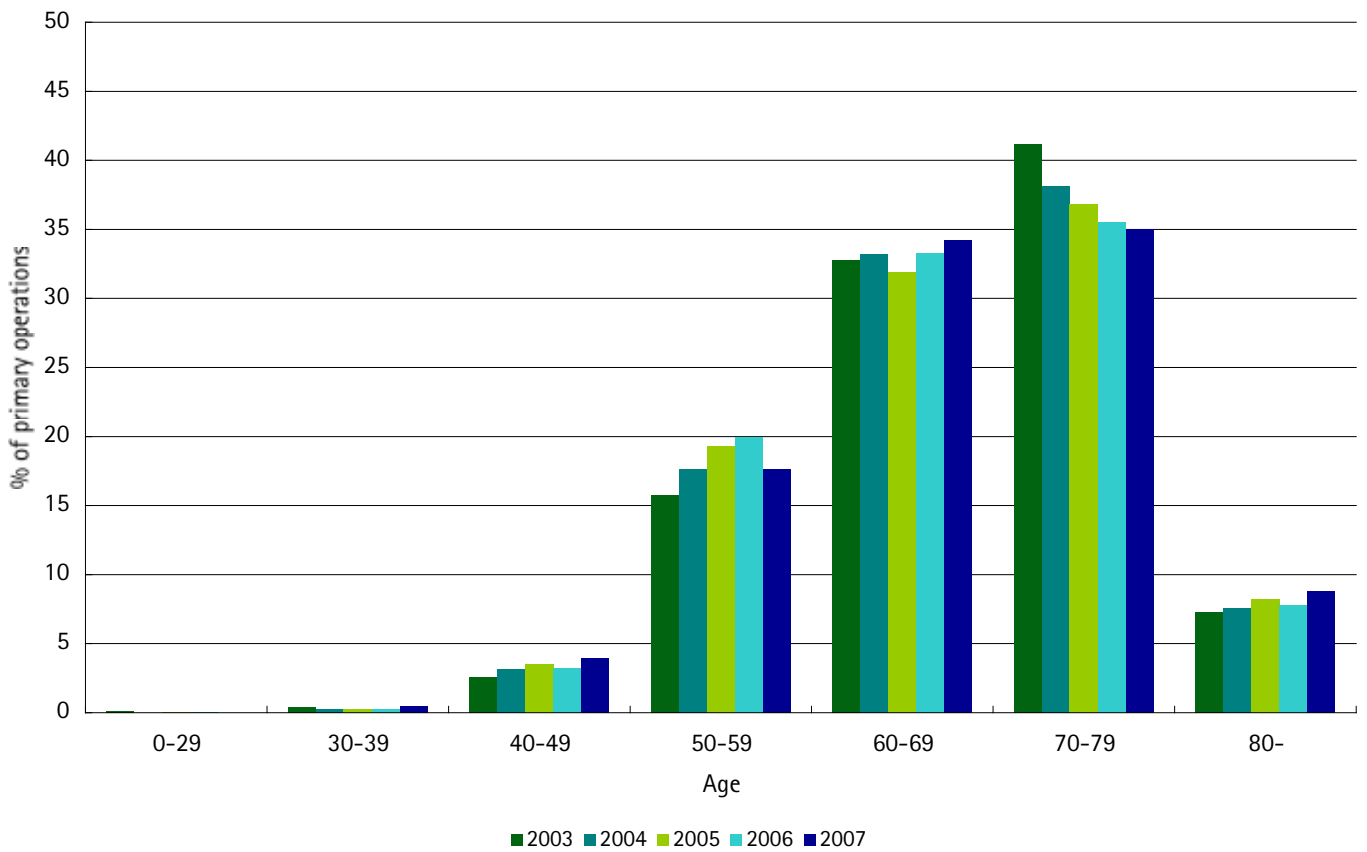


Figure K7a: Revision TKA operations performed in different Hospital Districts/100 000 inhabitants in 2007

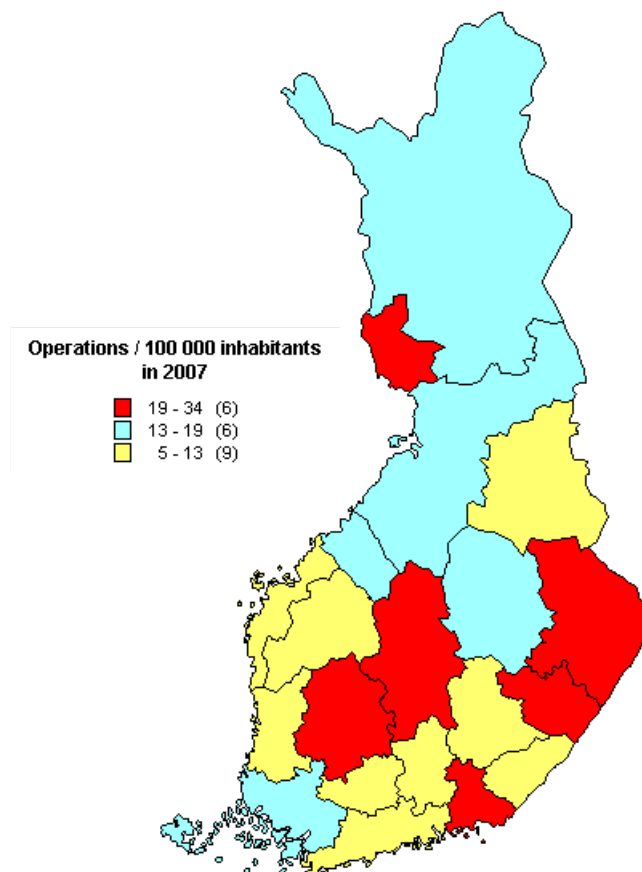


Figure K7a: Revision TKA operations performed in different Hospital Districts/100 000 inhabitants, average of the years 2003 - 2007

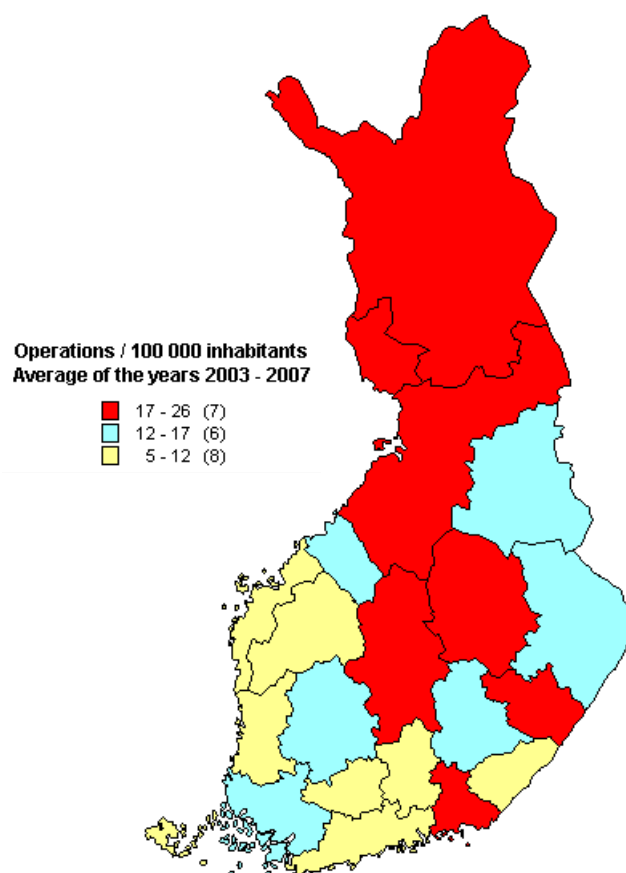


Figure K10: Number of hospitals performing Total Knee Arthroplasties in 1988 - 2007

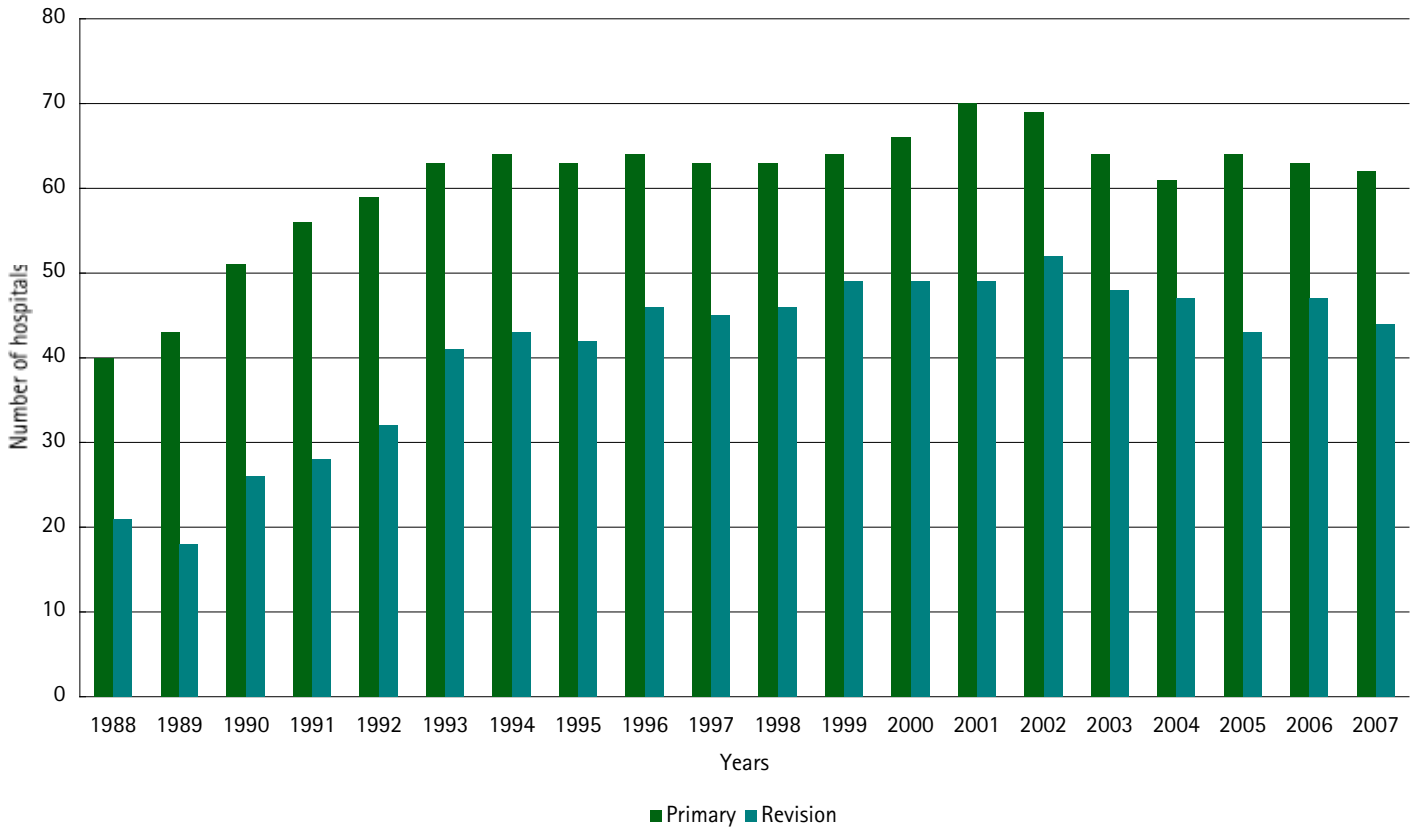


Figure K11: Indications for TKA revisions in 1998 - 2007

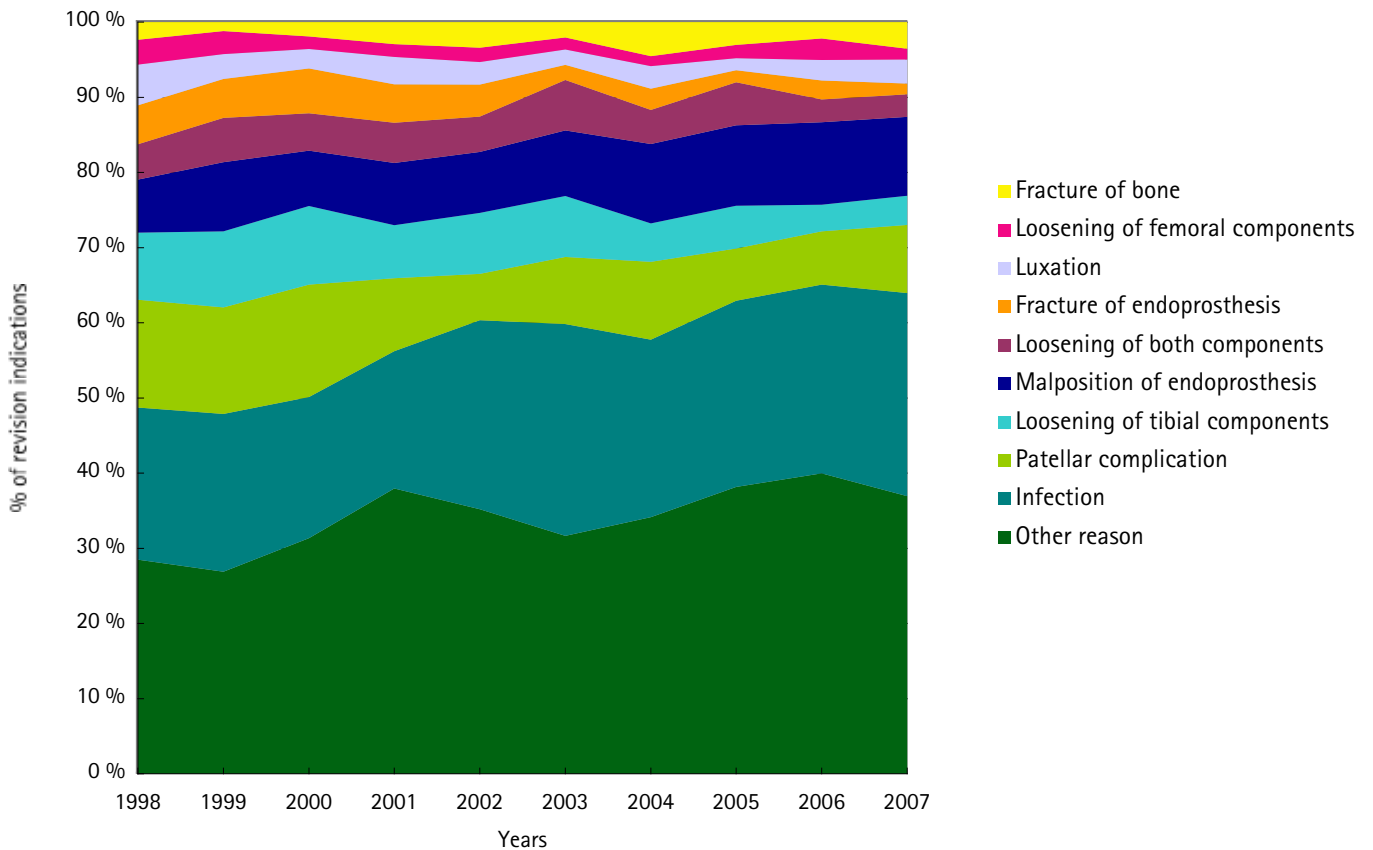


Figure K12: The most common types of removed knee prostheses in 1998 – 2007

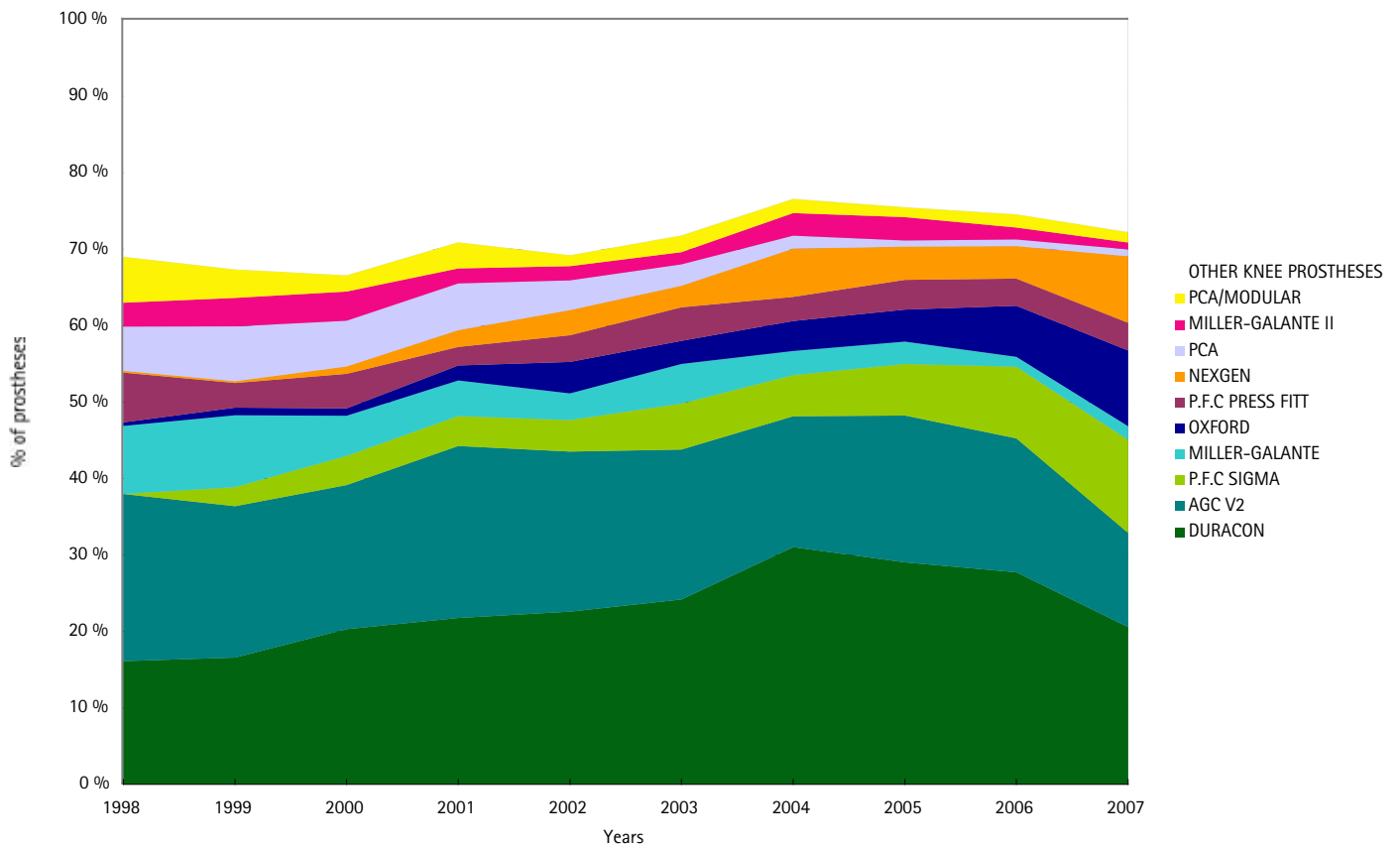


Figure K13: Previous operation year in Total Knee Arthroplasty revisions in 2007

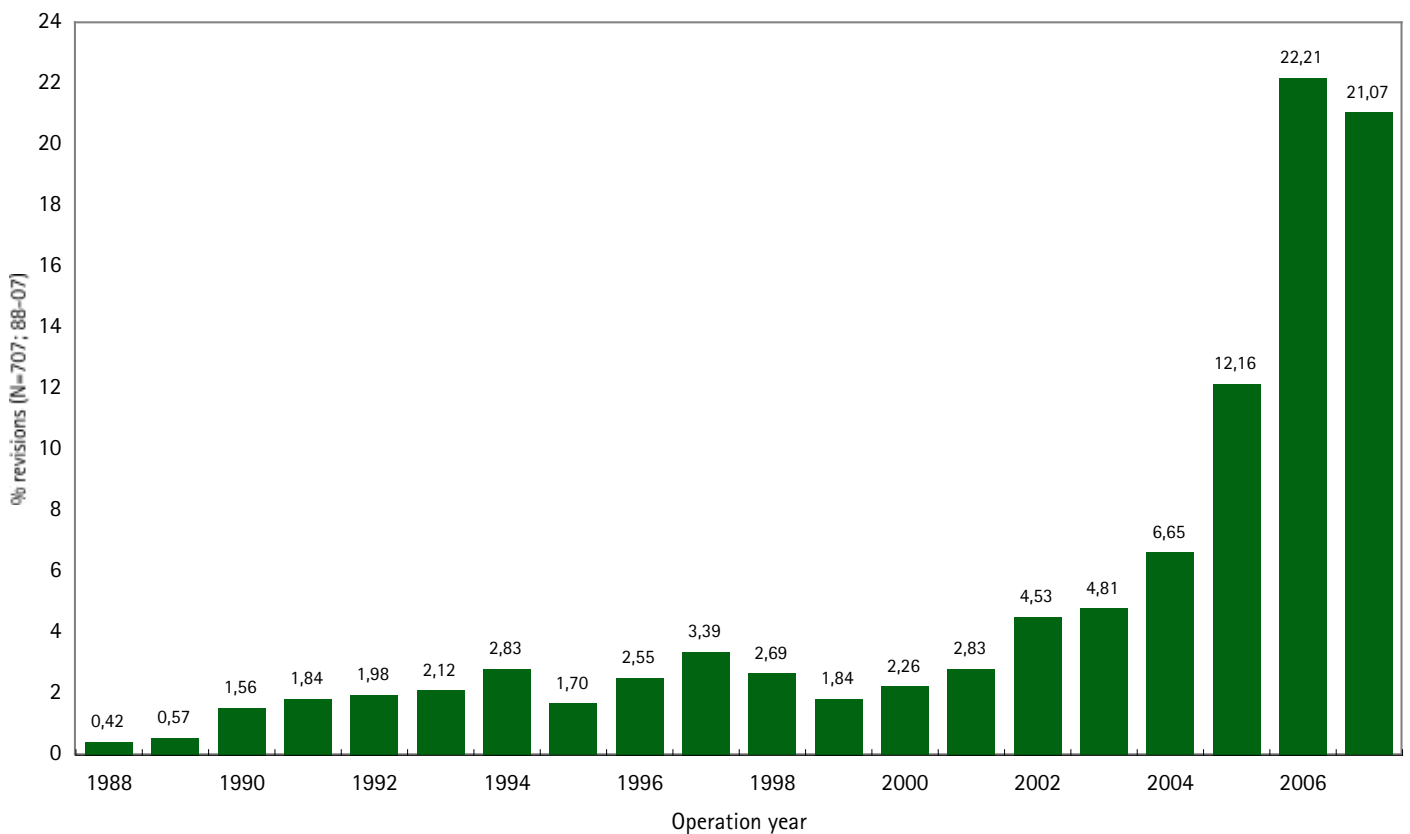


Figure K14: The most common types of knee revision prostheses used in 1998 – 2007

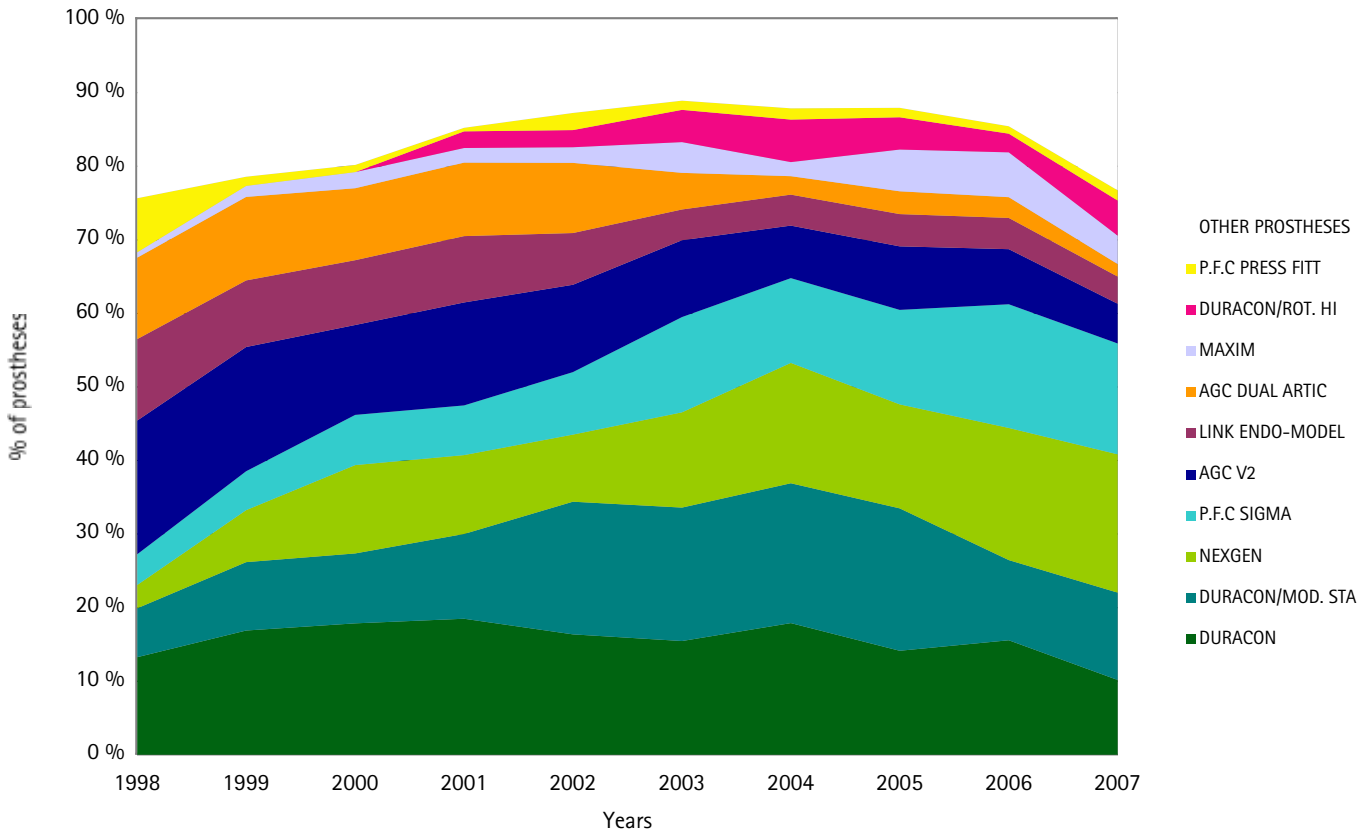


Figure K15: The most common bone cements used in Knee Arthroplasties in 1998 – 2007

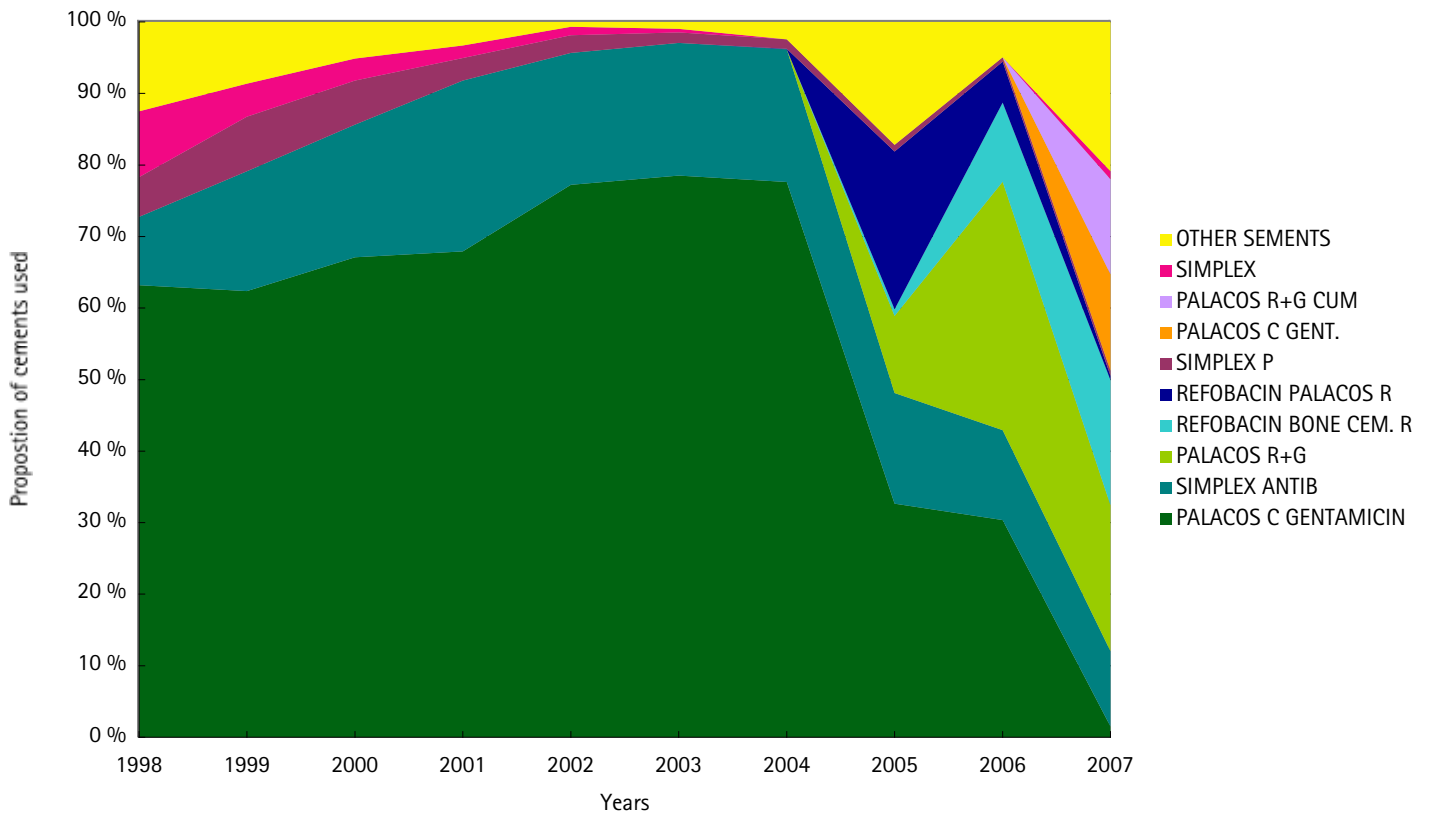


Figure K16: The most common antibiotic prophylaxis used in Knee Primary operations in 1998 - 2007

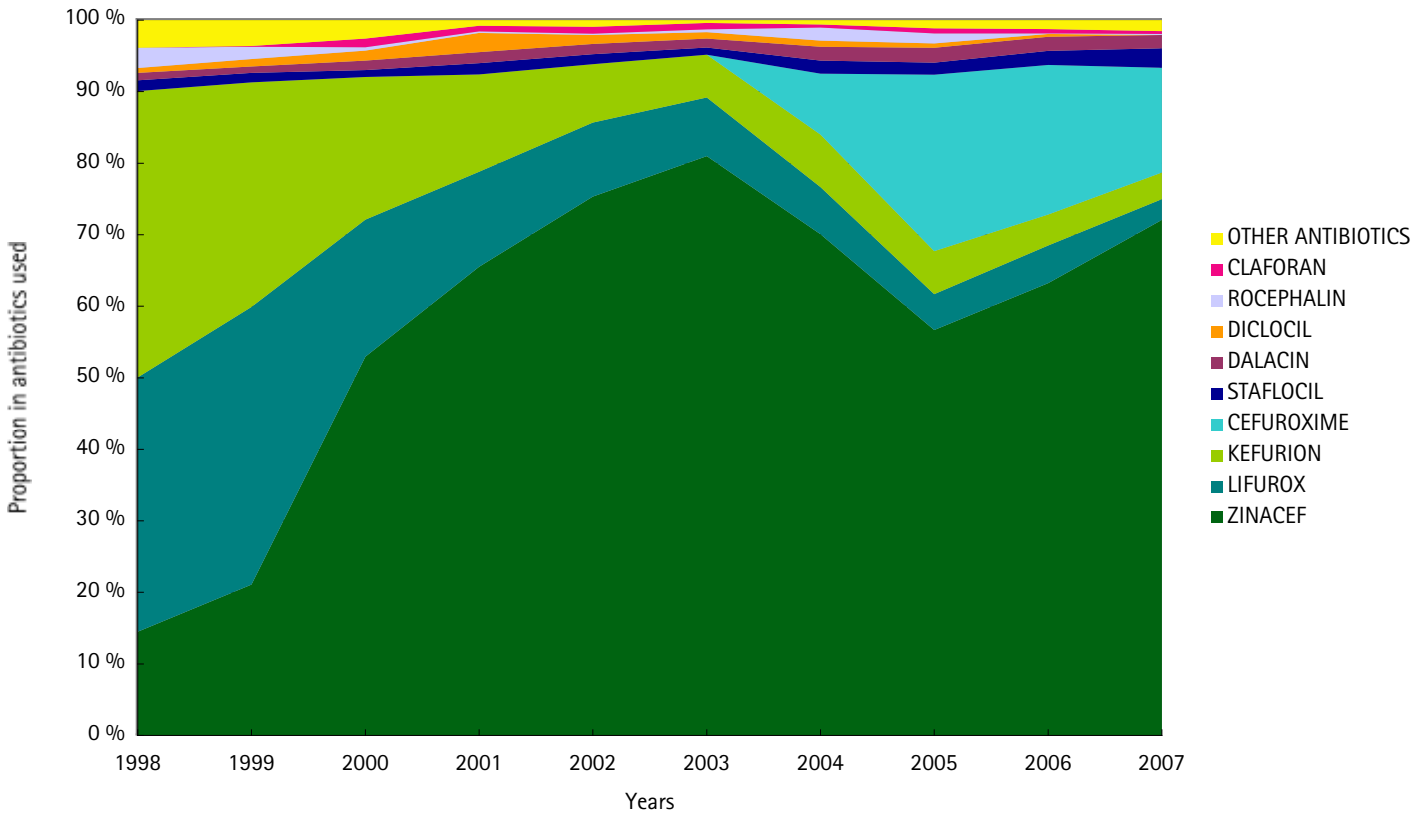


Figure K17: Allograft, Autograft and Xenograft in Knee Revisions in 1998 - 2007

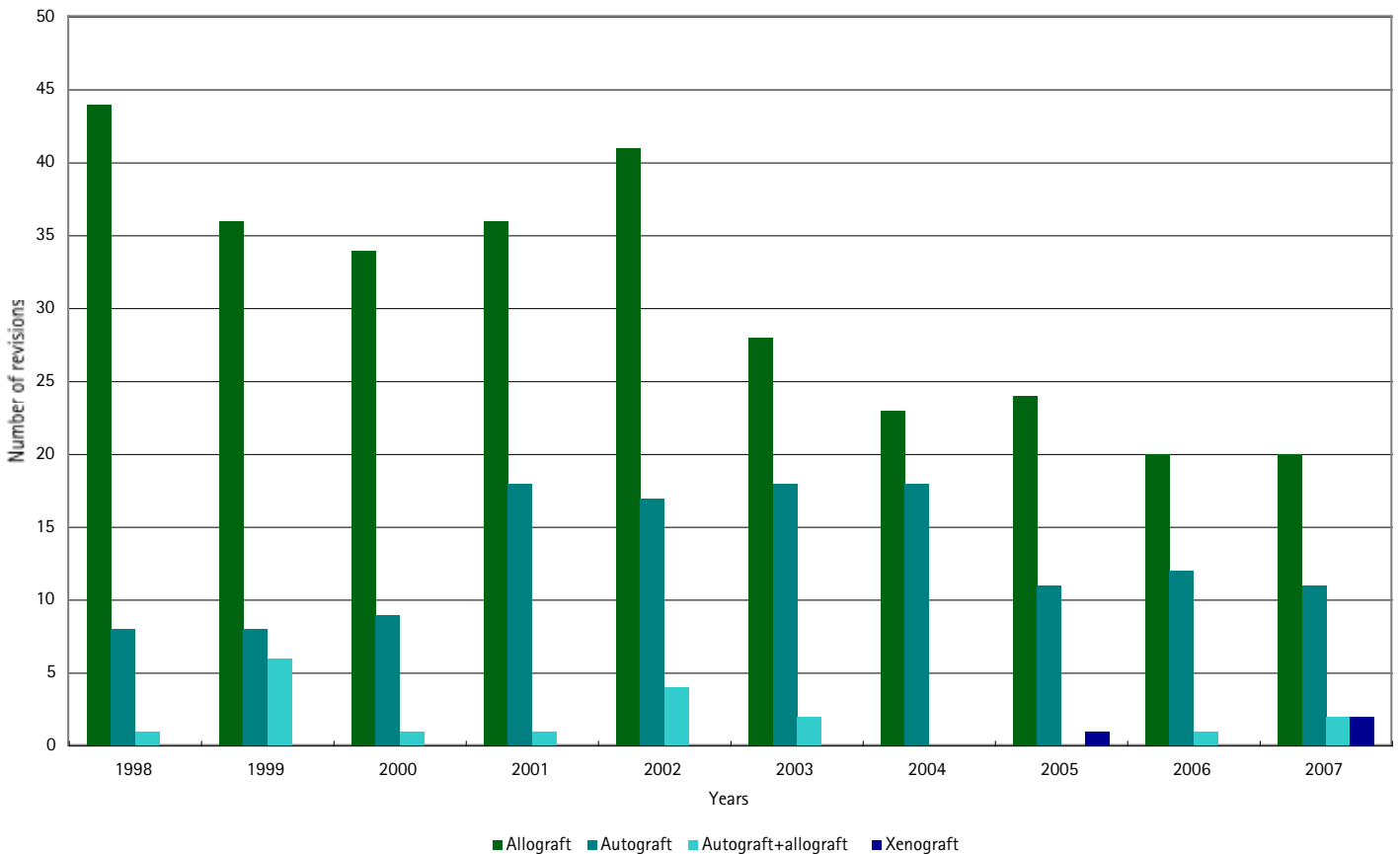


Figure O1a: Primary and revision arthroplasties of other joints, upper extremity in 1988 - 2007

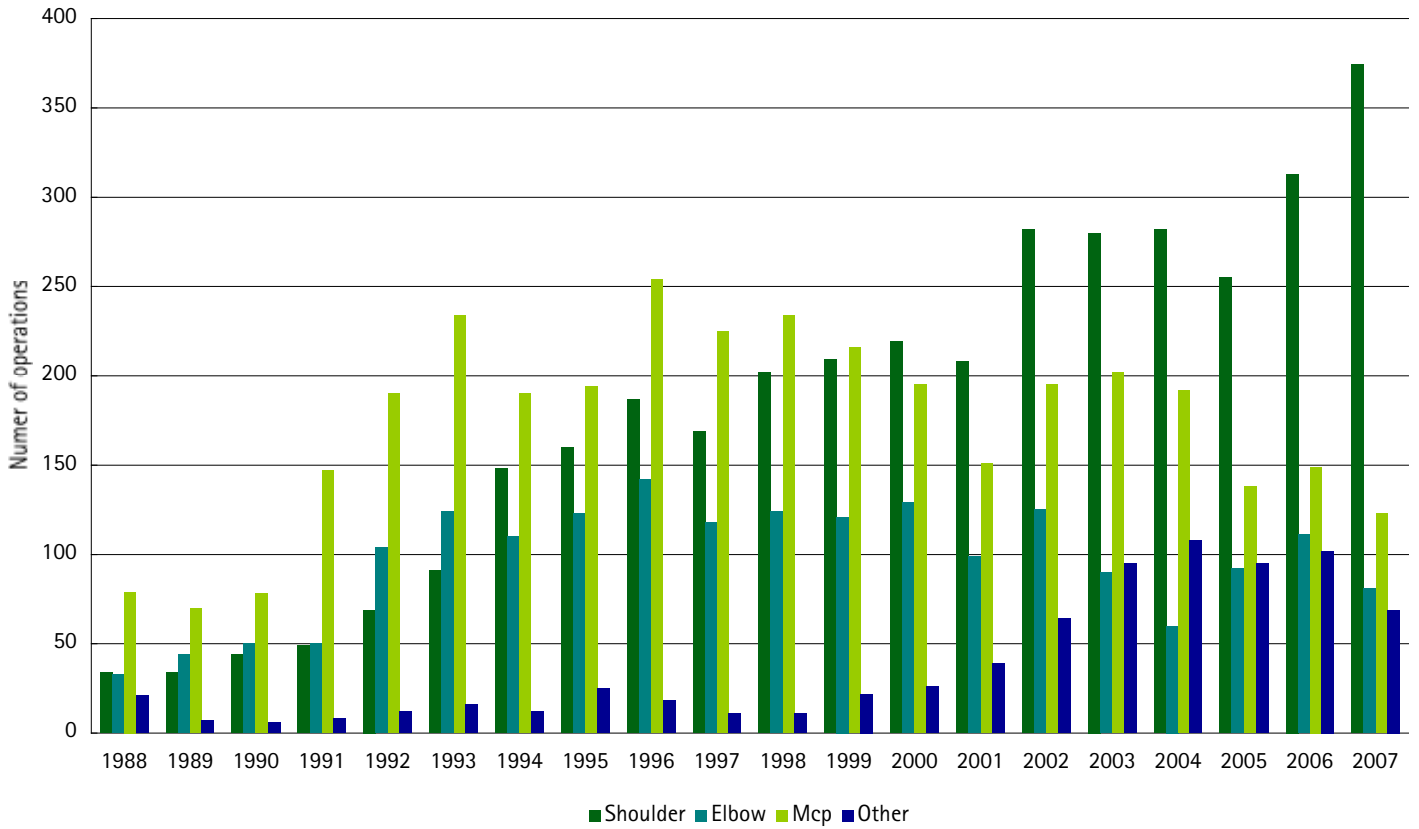


Figure O1b: Primary and revision arthroplasties of other joints, lower extremity in 1988 - 2007

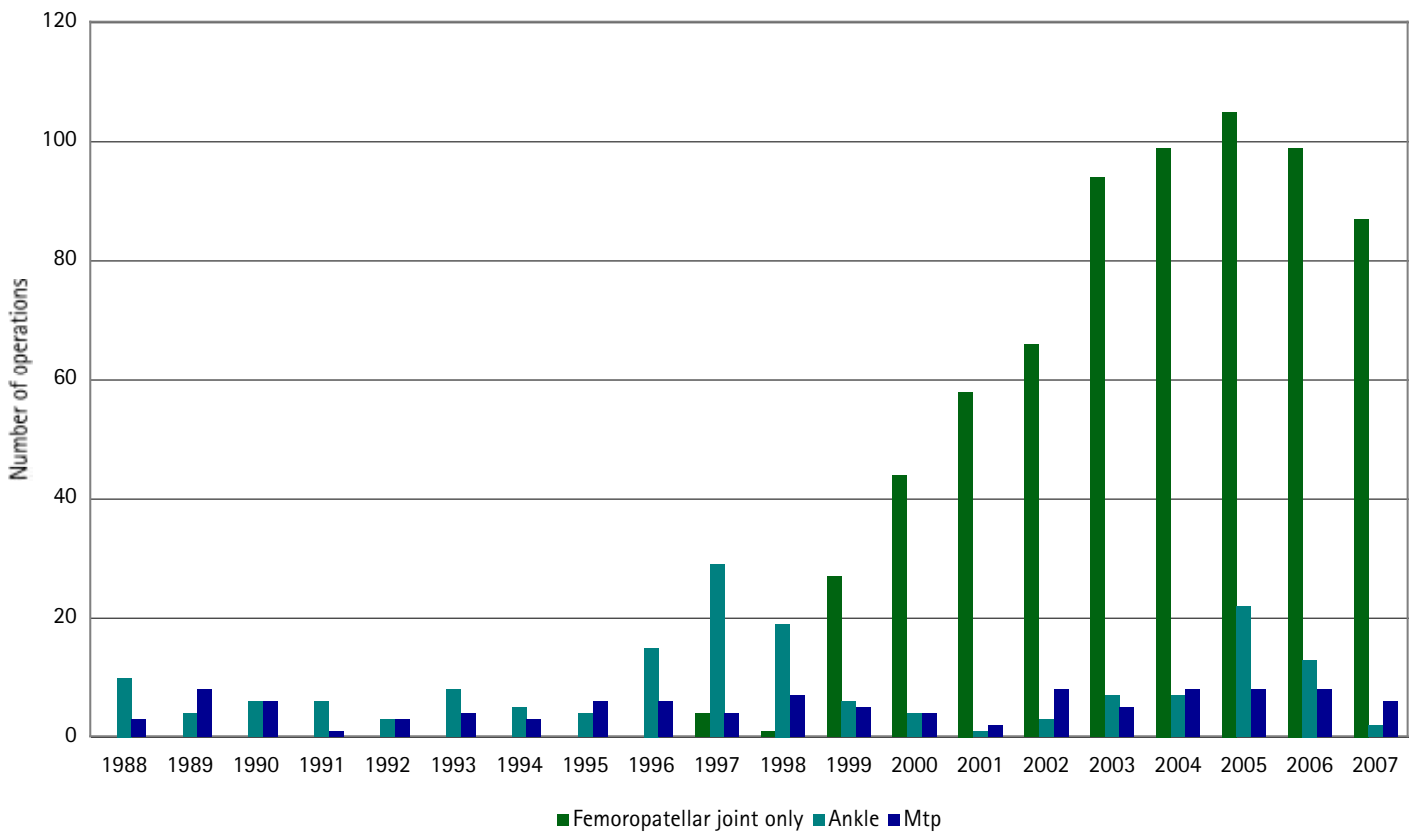


Figure O2: Primary indications for arthroplasties of other joints in 1988 - 2007

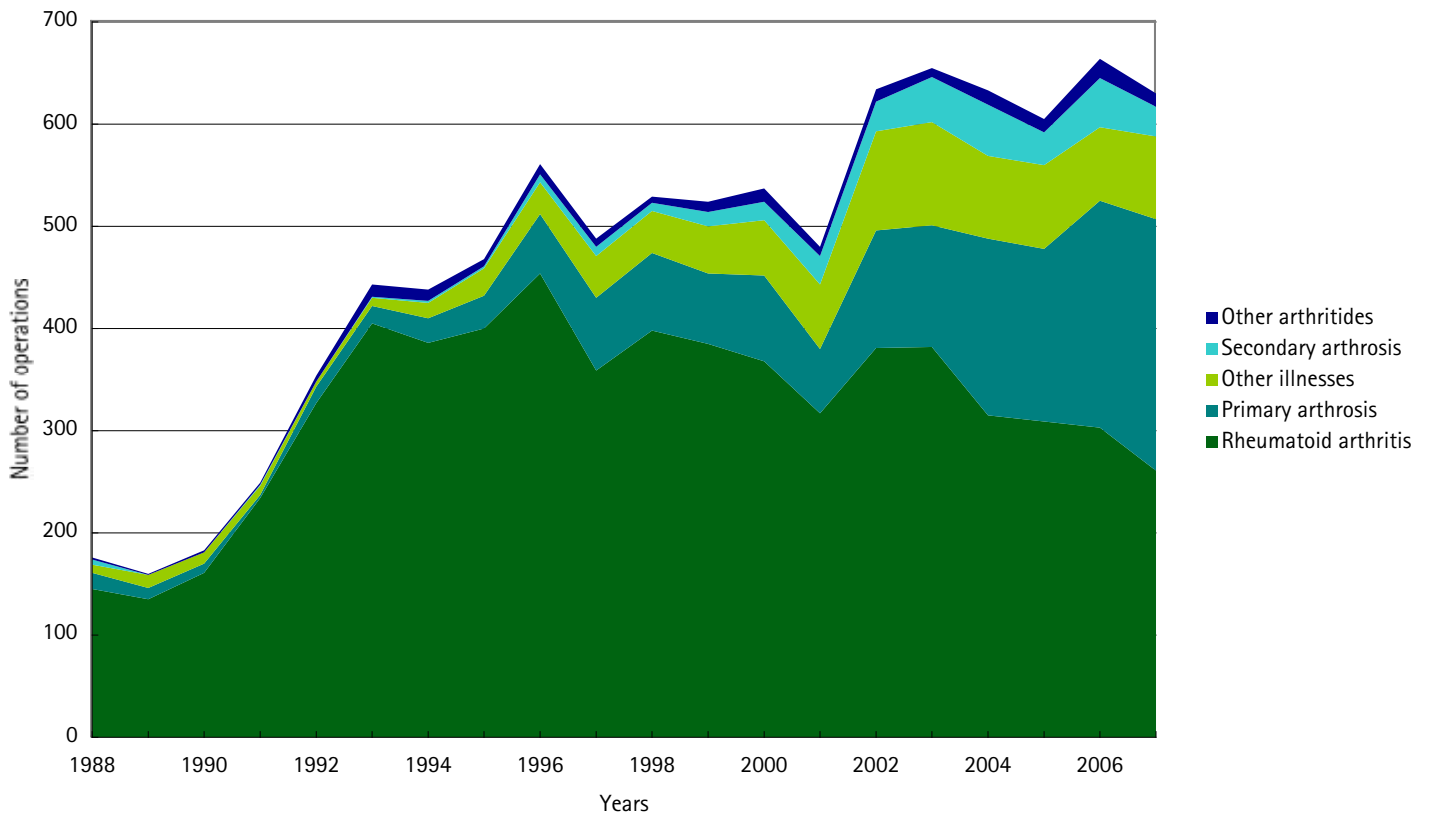


Figure O3a: Indications for revision of other joints in 1998 - 2007

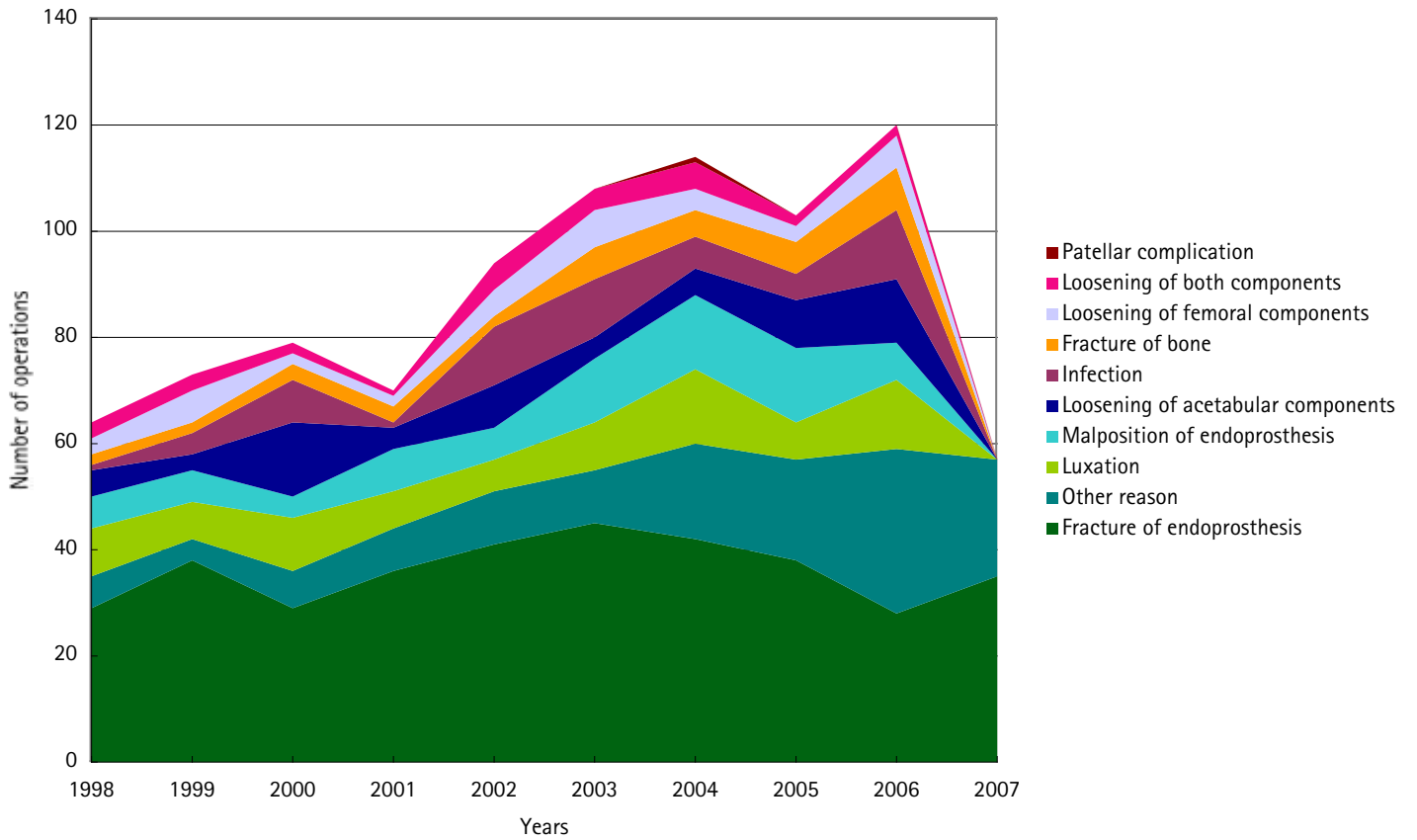


Figure O3b: Revision operations of other joints in 1998 - 2007

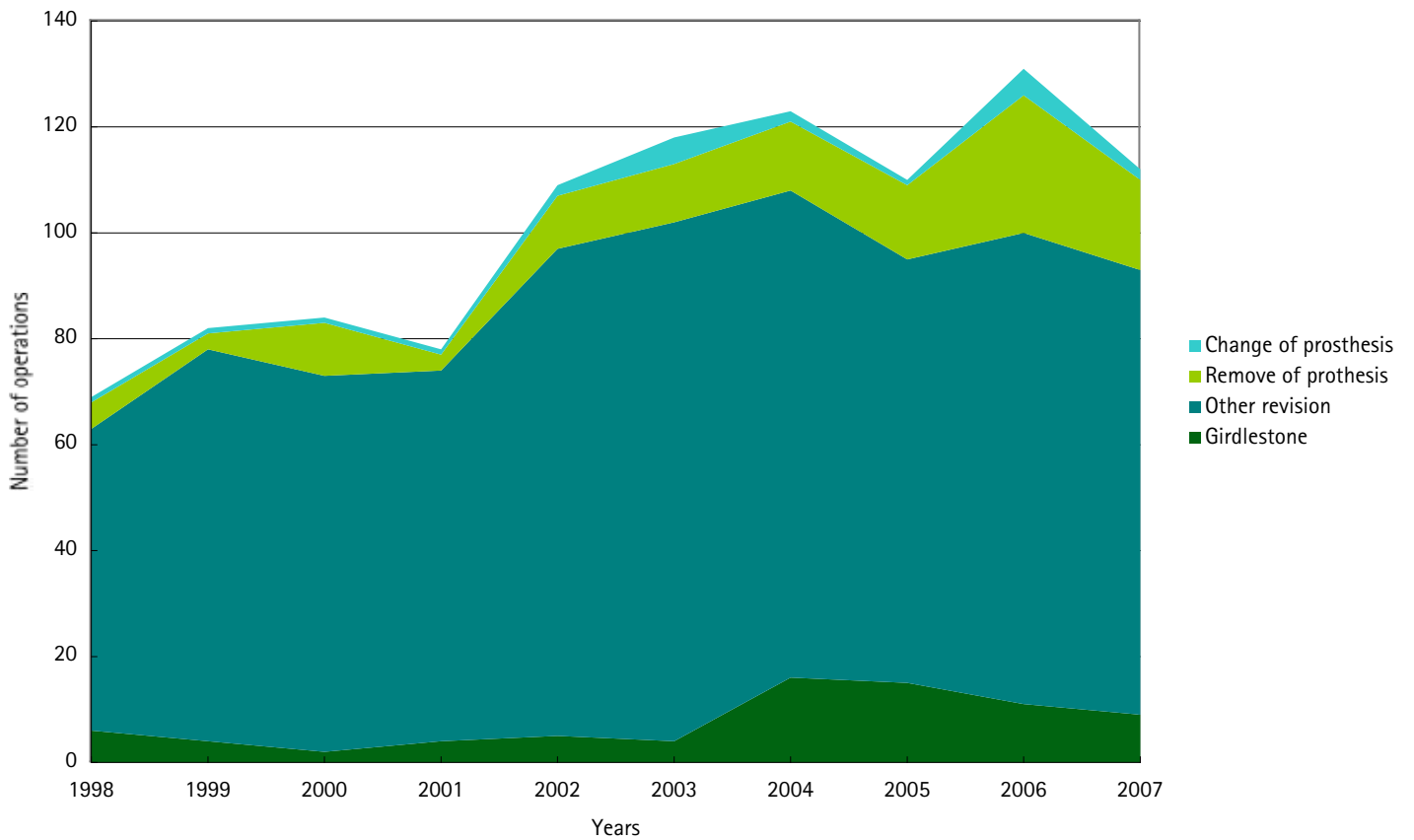


Figure O4: Previous operation year of first revision in other joints in 2007

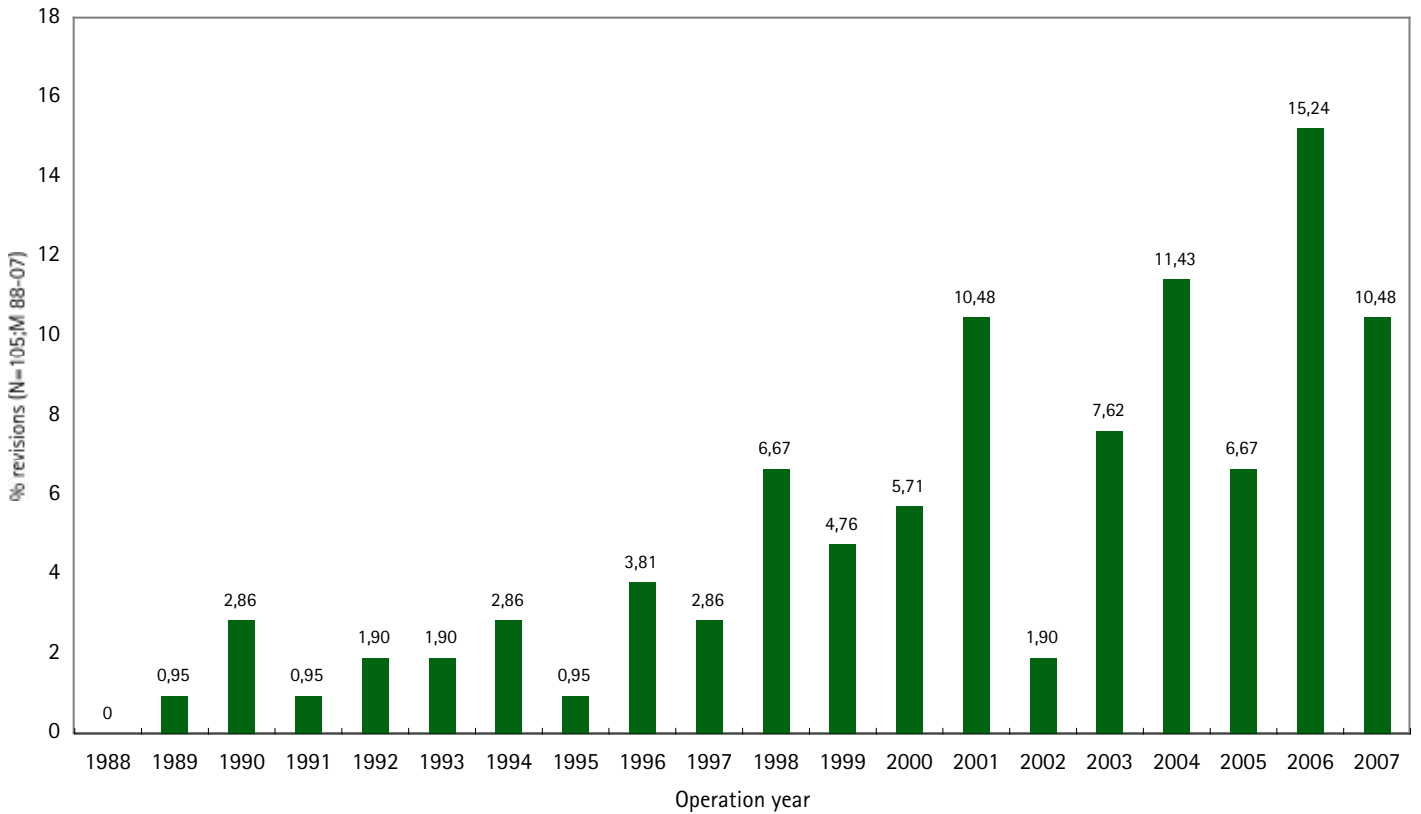


Figure O5: Number of hospitals performing Elbow and Shoulder Arthroplasties in 1988 - 2007

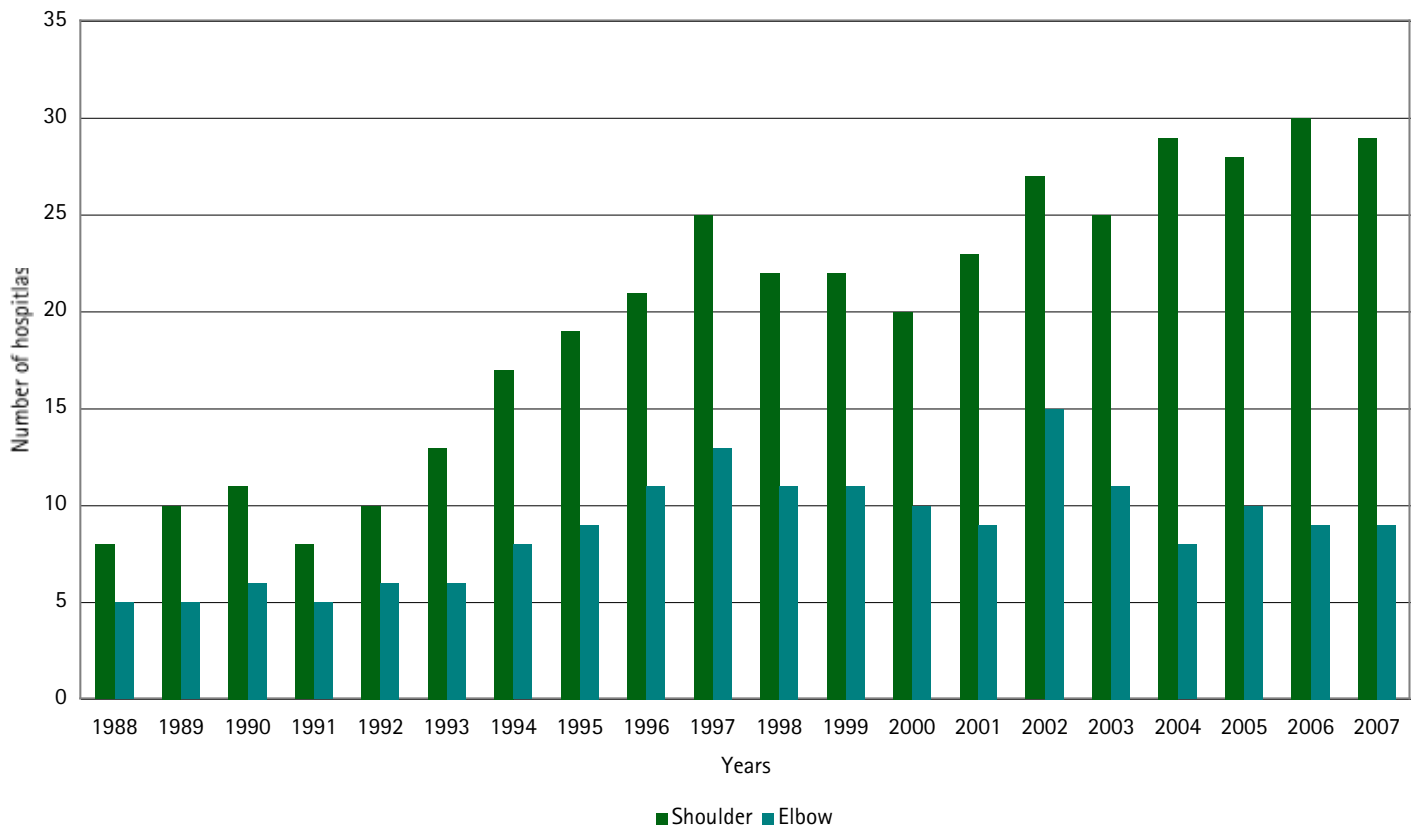


Figure O6a: Shoulder Arthroplasty operations performed in different Hospital Districts/100 000 inhabitants in 2007

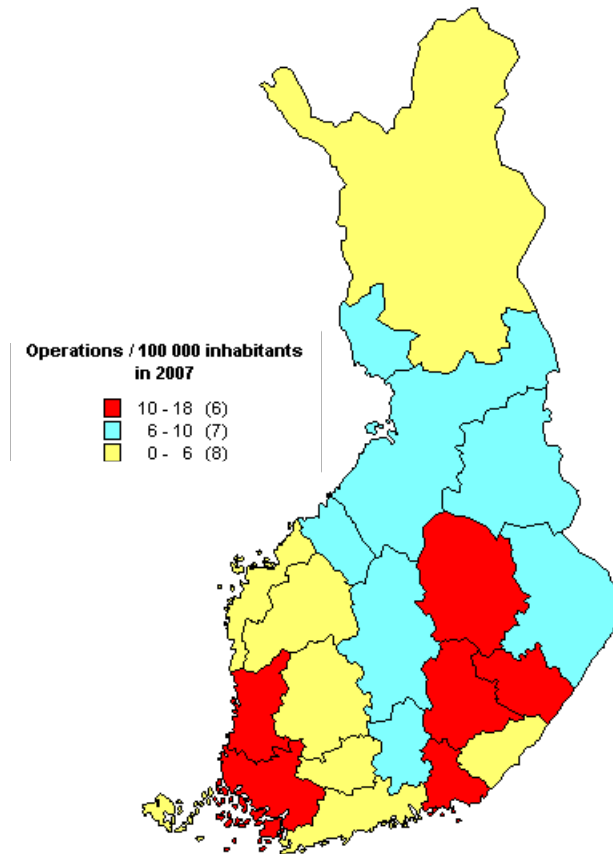


Figure O6b: Shoulder Arthroplasty operations performed in different Hospital Districts/100 000 inhabitants in 2003 - 2007

Figure O6b: Shoulder Arthroplasty operations performed in different Hospital Districts / 100 000 inhabitants in 2003 - 2007

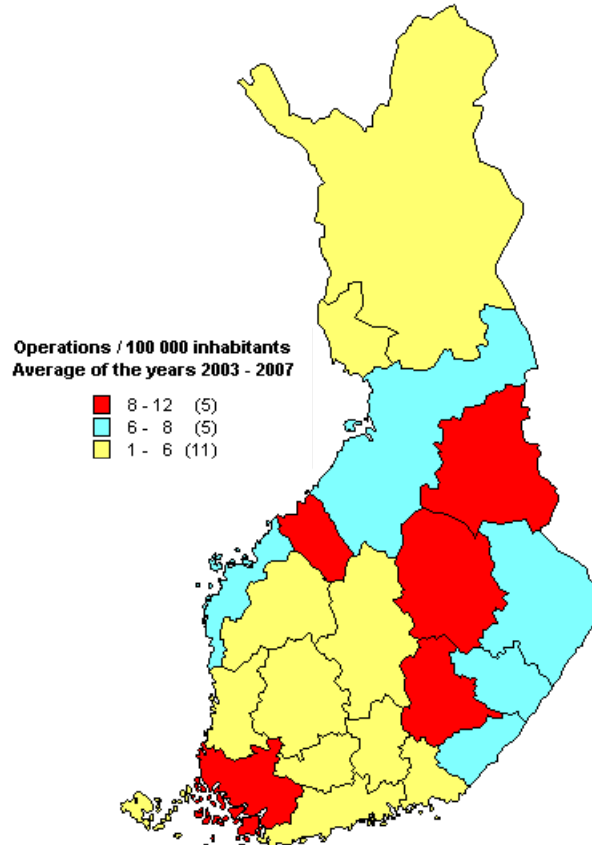


Figure O7a: Elbow Arthroplasty operations performed in different Hospital Districts/100 000 inhabitants in 2007

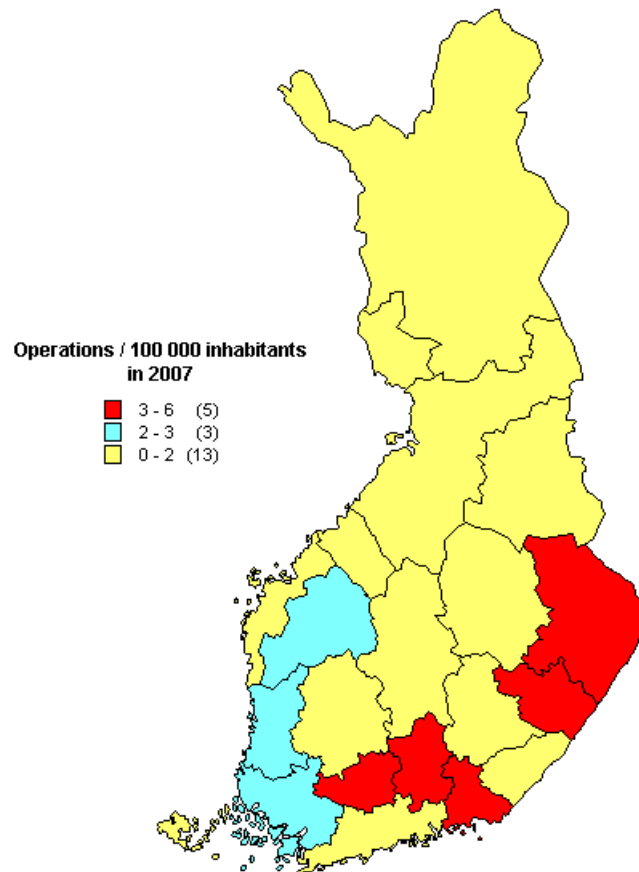


Figure O7b: Elbow Arthroplasty operations performed in different Hospital Districts/100 000 inhabitants in 2003 - 2007

